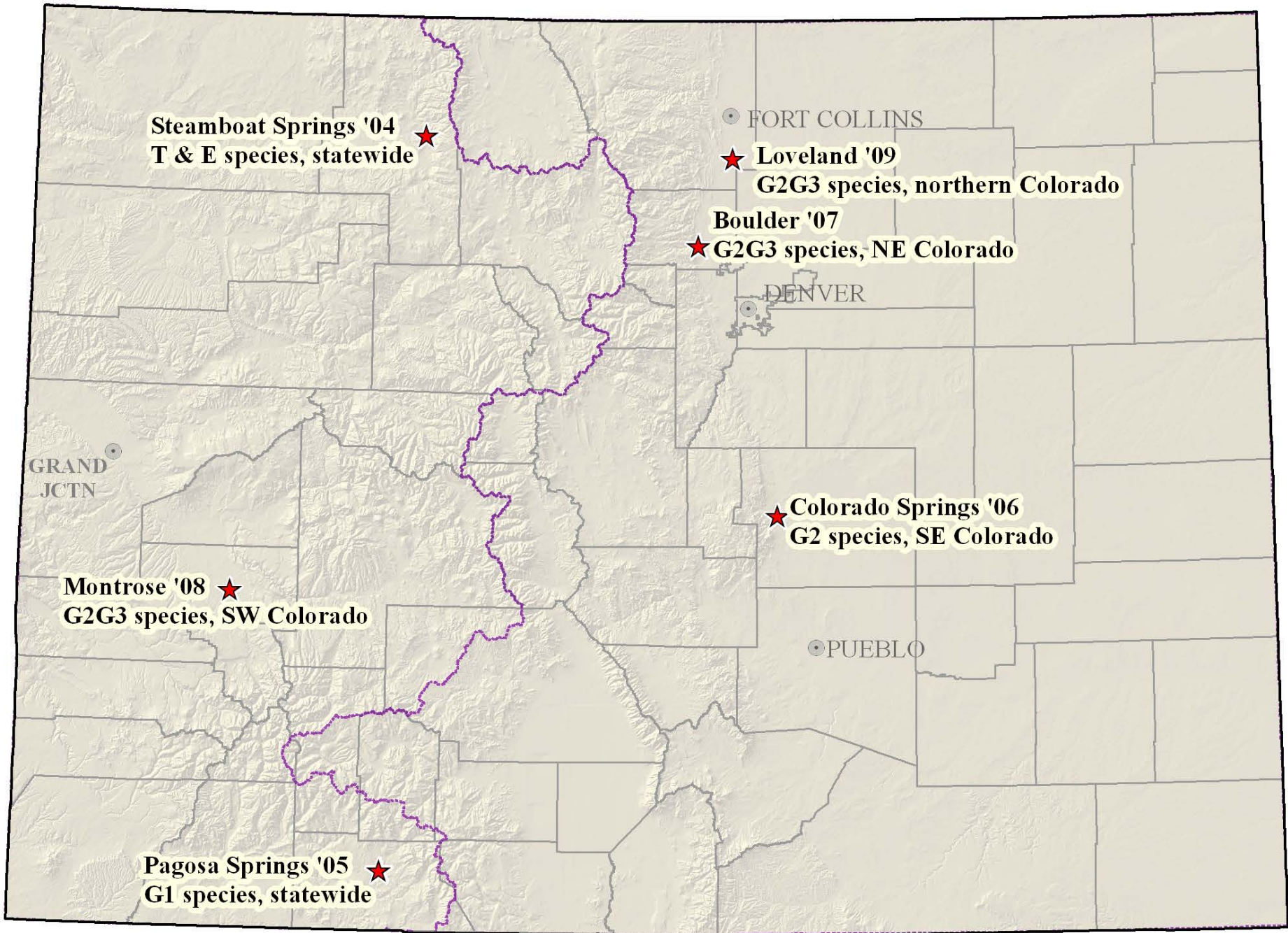


# Review of Previous Meetings

## 1st Through 5th Annual Colorado Rare Plant Symposia 2004-2008





**Steamboat Springs '04** ★  
T & E species, statewide

● FORT COLLINS

★ **Loveland '09**  
G2G3 species, northern Colorado

**Boulder '07**

★ **G2G3 species, NE Colorado**

● DENVER

● GRAND JCTN

**Montrose '08** ★  
G2G3 species, SW Colorado

★ **Colorado Springs '06**  
G2 species, SE Colorado

● PUEBLO

**Pagosa Springs '05** ★  
G1 species, statewide

# Species from previous years

## 2004 - T & E Species Statewide

*Astragalus humillimus*

*Astragalus osterhoutii*

*Astragalus tortipes*

*Botrychium lineare*

*Eriogonum pelinophilum*

*Eutrema edwardsii* ssp. *penlandii*

*Ipomopsis polyantha*

*Lesquerella congesta*

*Oenothera coloradensis* ssp. *coloradensis*

*Pediocactus knowltonii*

*Penstemon debilis*

*Penstemon grahamii*

*Penstemon penlandii*

*Penstemon scariosus* var. *albifluvis*

*Phacelia formosula*

*Phacelia submutica*

*Physaria obcordata*

*Sclerocactus glaucus*

*Sclerocactus mesae-verdae*

*Spiranthes diluvialis*

## 2005 - G1 Species Statewide

*Aletes latilobus*

*Aliciella sedifolia*

*Astragalus lonchocarpus* var. *hamiltonii*

*Astragalus microcymbus*

*Astragalus schmolliae*

*Cirsium scapanolepis*

*Corispermum navicula*

*Cryptantha gypsophila*

*Draba weberi*

*Erigeron wilkenii*

*Eriogonum brandegeei*

*Hackelia gracilentia*

*Lygodesmia doloresensis*

*Mimulus gemmiparus*

*Oreoxis humilis*

*Penstemon gibbensii*

*Physaria pulvinata*

## 2006 - G2 Species SE Colo

*Asclepias uncialis* ssp. *uncialis*

*Cleome multicaulis*

*Delphinium ramosum* var. *alpestre*

*Delphinium robustum*

*Draba exunguiculata*

*Draba grayana*

*Draba smithii*

*Grindelia inornata*

*Herrickia horrida*

*Lesquerella calcicola*

*Nuttallia chrysantha*

*Nuttallia densa*

*Oenothera harringtonii*

*Oonopsis foliosa* var. *monocephala*

*Oonopsis puebloensis*

*Oxybaphus rotundifolius*

*Penstemon degeneri*

*Ptilagrostis porteri*

*Telesonix jamesii*

**2007 - G2G3 Species  
NE Colo**

*Aletes humilis*  
*Aletes nuttallii*  
*Aquilegia saximontana*  
*Astragalus sparsiflorus*  
*Bolophyta alpina*  
*Carex oreocharis*  
*Draba crassa*  
*Draba globosa*  
*Draba streptobrachia*  
*Eriogonum exilifolium*  
*Heuchera hallii*  
*Nuttallia sinuata*  
*Nuttallia speciosa*  
*Oonopsis wardii*  
*Phacelia denticulata*  
*Physaria bellii*  
*Potentilla ambigens*  
*Potentilla rupincola*  
*Sisyrinchium pallidum*

**2008 - G2G3 Species  
SW Colo**

*Astragalus anisus*  
*Astragalus cronquistii*  
*Astragalus equisolensis*  
*Astragalus iodopetalus*  
*Astragalus naturitensis*  
*Astragalus piscator*  
*Astragalus rafaelensis*  
*Boechea crandallii*  
*Camissonia eastwoodiae*  
*Castilleja puberula*  
*Cirsium perplexans*  
*Draba graminea*  
*Erigeron kachinensis*  
*Eriogonum clavellatum*  
*Eriogonum coloradense*  
*Lepidium crenatum*  
*Lesquerella pruinosa*  
*Lesquerella vicina*  
*Lomatium concinnum*

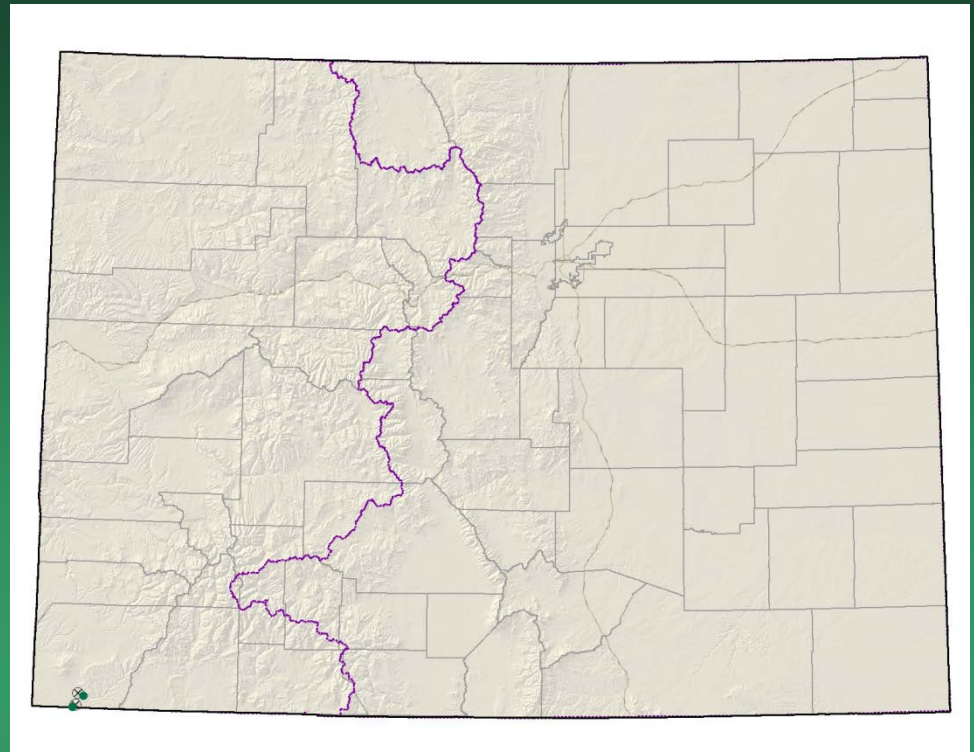
*Lupinus crassus*  
*Machaeranthera coloradoensis*  
*Oreocarya osterhoutii*  
*Physaria alpina*  
*Physaria rollinsii*  
*Puccinellia parishii*  
*Salix arizonica*  
*Thelypodopsis juniperorum*  
*Townsendia glabella*  
*Townsendia rothrockii*



2004  
Steamboat Springs  
Statewide  
T & E Species

# *Astragalus humillimus*

## Mancos milkvetch



- Federal status: Endangered
- Heritage ranks: G1/S1
- Global distribution: New Mexico and Colorado
- Last observed in Colorado: CNAP 1998
- Colorado occurrences: 4 (3 are historical)
- Colorado individuals: 25,000
- Primary threats: mineral, oil, and gas development, seismic exploration
- Land ownership/management: Ute Mountain Ute



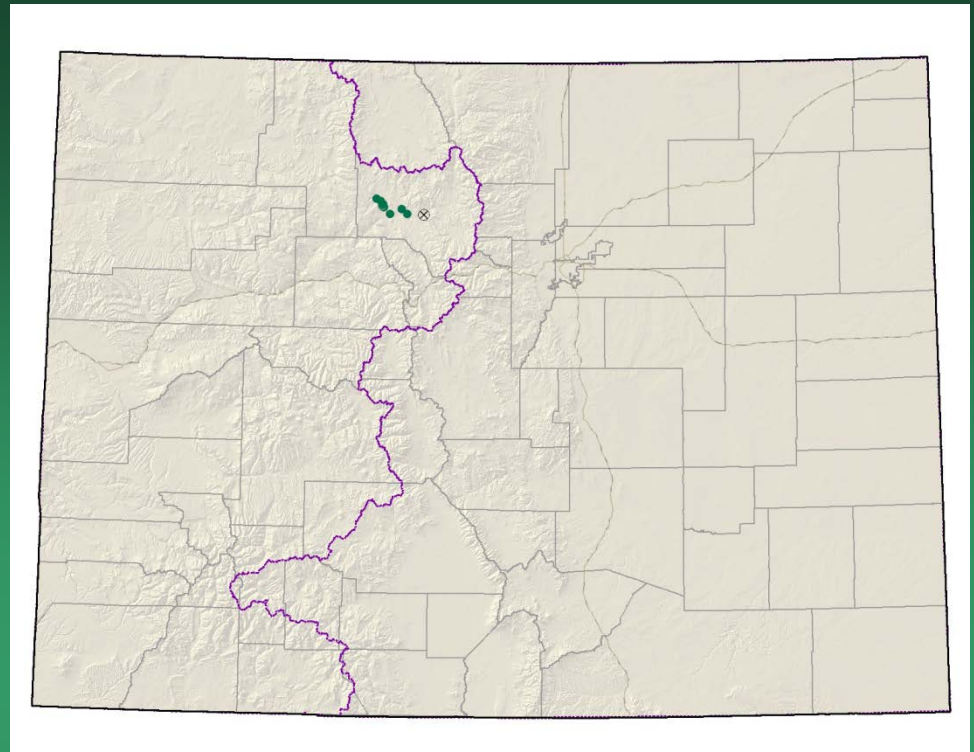
*Astragalus humillimus*





# *Astragalus osterhoutii*

## Osterhout milkvetch



- Federal status: Endangered
- Heritage ranks: G1/S1
- Global distribution: Colorado endemic
- Last observed: 2009
- Occurrences: 6 (1 is historical)
- Individuals: 25,000-50,000
- Primary threats: recreation, mining, oil and gas development
- Land ownership/management: BLM, private, state

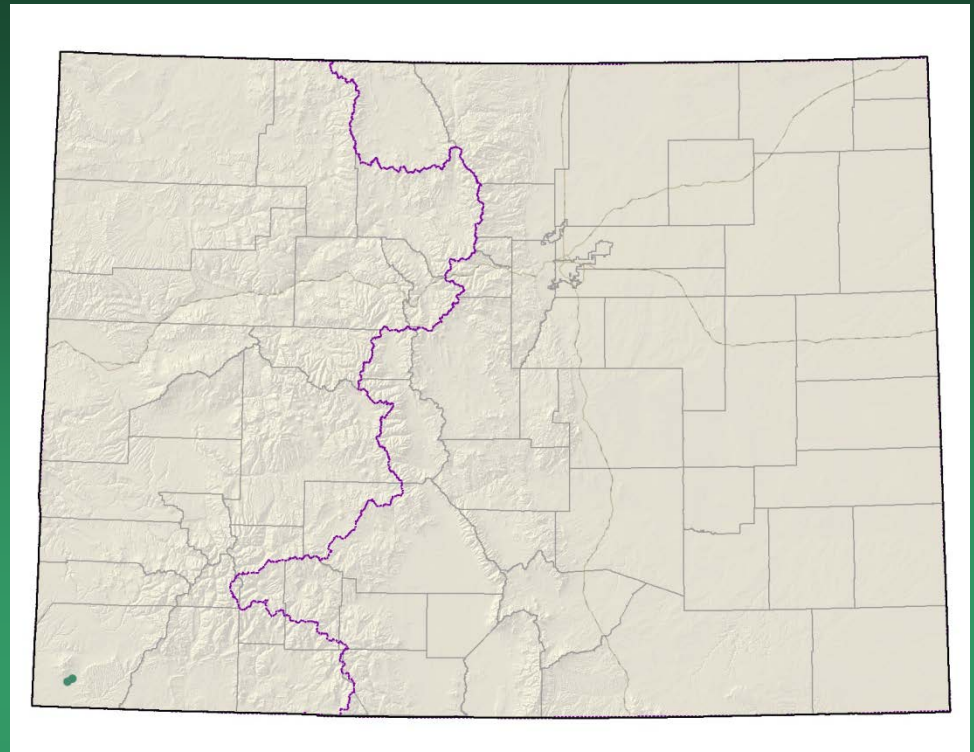


*Astragalus osterhoutii*



# *Astragalus tortipes*

## Sleeping Ute milkvetch



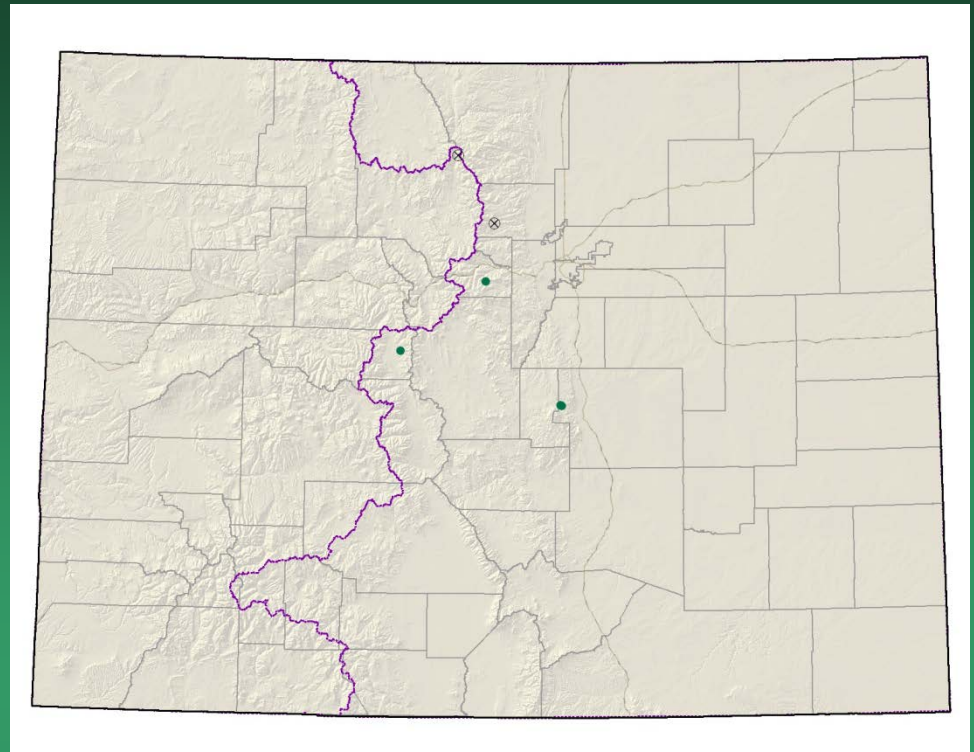
- Federal status: Candidate
- Heritage ranks: G1/S1
- Global distribution: Colorado endemic
- Last observed: 2000
- Occurrences: 2
- Individuals: 2,000-3,000
- Primary threats: McPhee Reservoir canals, agricultural development
- Land ownership/management: Ute Mountain Ute



*Astragalus tortipes*



# *Botrychium lineare?* Slender moonwort

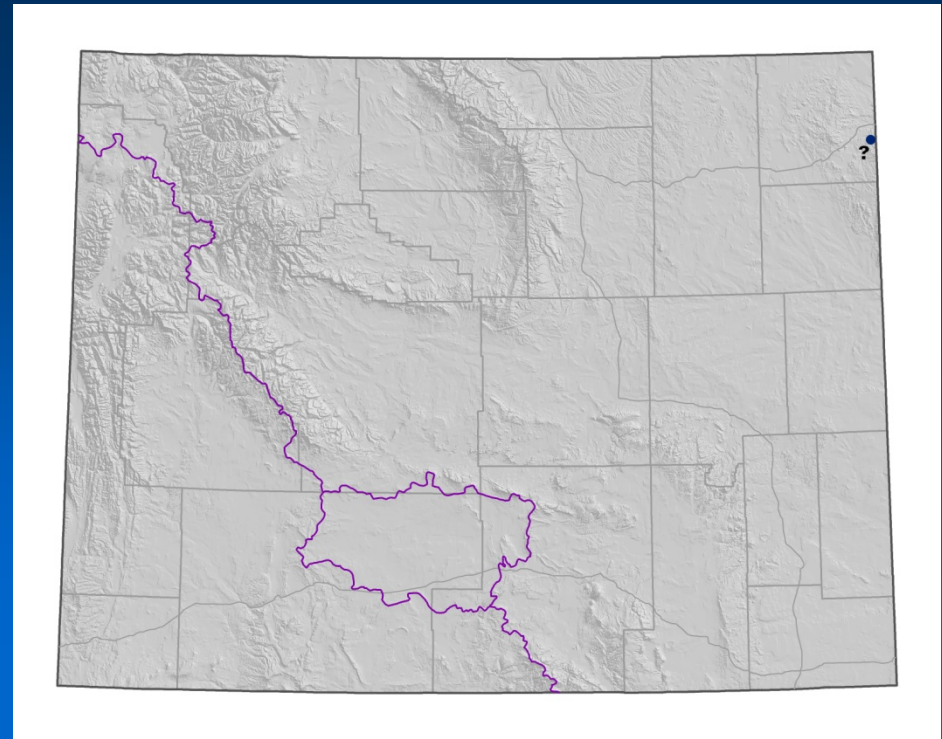


- Federal status: Removed;
- USFS R2 Sensitive
- Heritage ranks: G2? /S1
- Global distribution: New Brunswick, Quebec, Idaho, Montana, Oregon, California, Wyoming, and Colorado
- Last observed in Colorado: 2005
- Colorado occurrences: 5 or more (2 are historical)
- Colorado individuals: 60
- Primary threats: road maintenance, weeds
- Land ownership/management: USFS, private, city of Denver



# *Botrychium lineare*?

## Slender moonwort



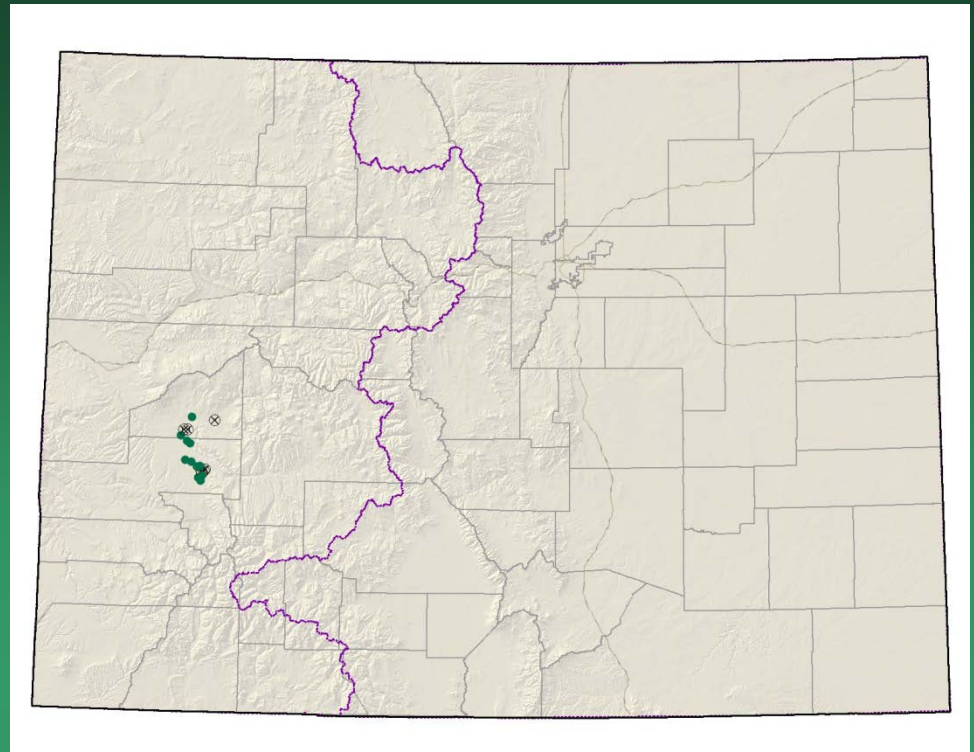
- Federal status: Removed; USFS R2 Sensitive
- Heritage ranks: G2?/S1
- Last observed in Wyoming: 2007
- Wyoming occurrences: 2 (1 possibly extirpated)
- Primary threats: prescribed burn practices, logging, grazing
- Land ownership/management: Black Hills NF

*Botrychium lineare*





*Eriogonum pelinophilum*  
Clay-loving wild  
buckwheat



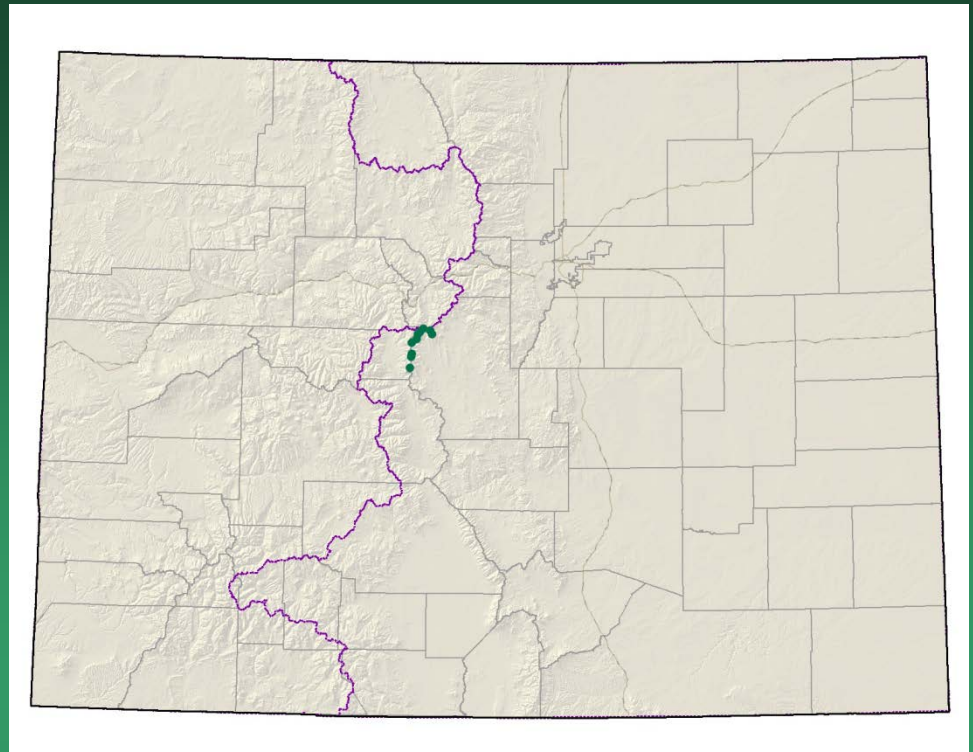
- Federal status: Endangered
- Heritage ranks: G2/S2
- Global distribution: Colorado endemic
- Last observed: 2007
- occurrences: 20 (4 are historical)
- Individuals: 30,000
- Primary threats: residential and agricultural developments, ORV use, overgrazing, oil and gas exploration
- Land ownership/management: private, BLM  
Waker property purchased

*Eriogonum pelinophilum*





*Eutrema penlandii*  
Penland alpine fen  
mustard



- Federal status: Endangered
- Heritage ranks: G1G2/S1S2
- Global distribution: Colorado endemic
- Last observed: 2008
- Occurrences: 11
- Individuals: 10,000-12,000
- Primary threats: mining, recreation
- Land ownership/management: private, USFS, BLM

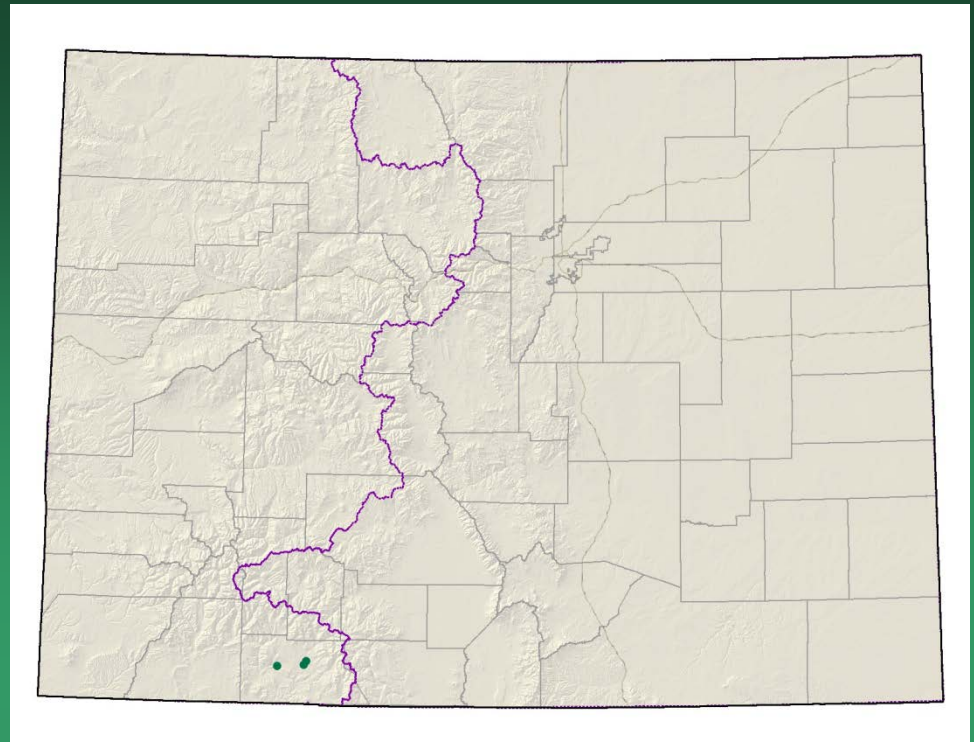


*Eutrema penlandii*





*Ipomopsis polyantha*  
*Pagosa gilia*



- Federal status: Candidate
- Heritage ranks: G1/S1
- Global distribution: Colorado endemic
- Last observed: 2009
- Individuals: 10,000
- Occurrences: 3
- Primary threats: residential development, road construction and maintenance, overgrazing
- Land ownership/management: private, highway right of way

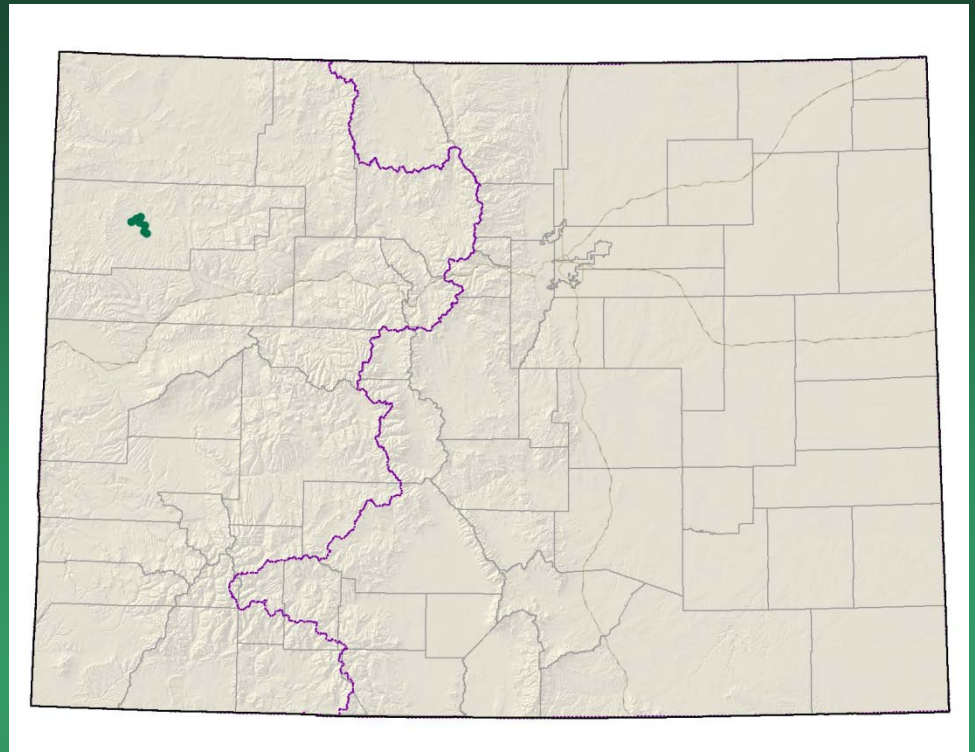
*Ipomopsis polyantha*





# *Lesquerella congesta*

## Dudley Bluffs bladderpod



- Federal status: Threatened
- Heritage ranks: G1/S1
- Global distribution: Colorado endemic
- Last observed: 2008
- Occurrences: 7
- Individuals: 100,000-500,000
- Primary threats: oil and gas development, oil shale and nahcolite mining, ORV use, overgrazing, trampling by wild horses
- Land ownership/management: BLM, state, private

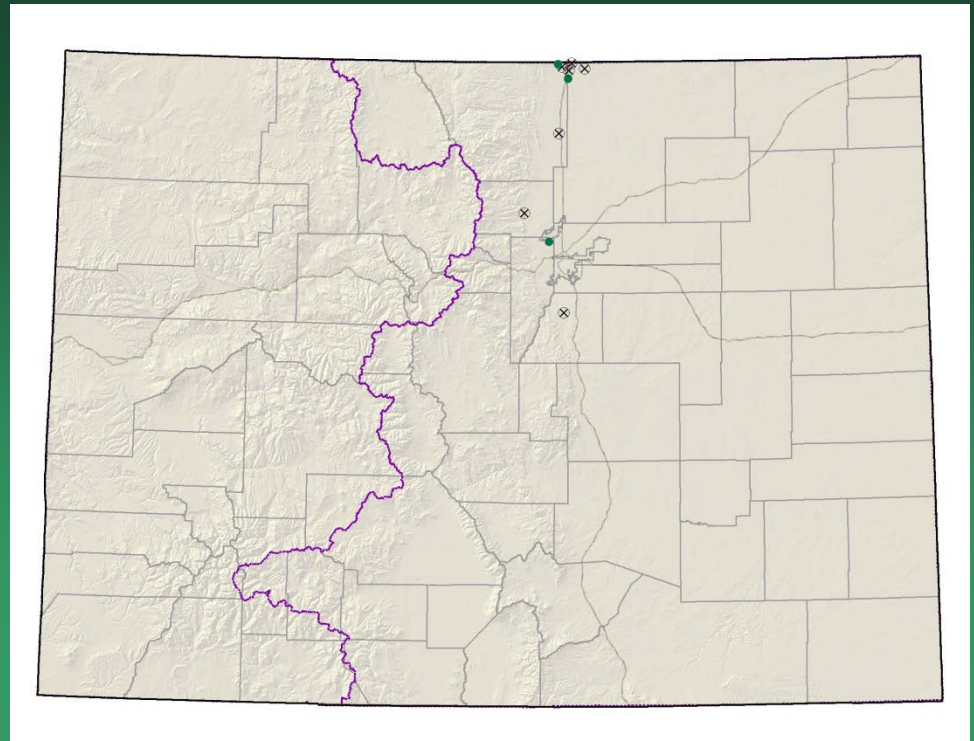


*Lesquerella congesta*





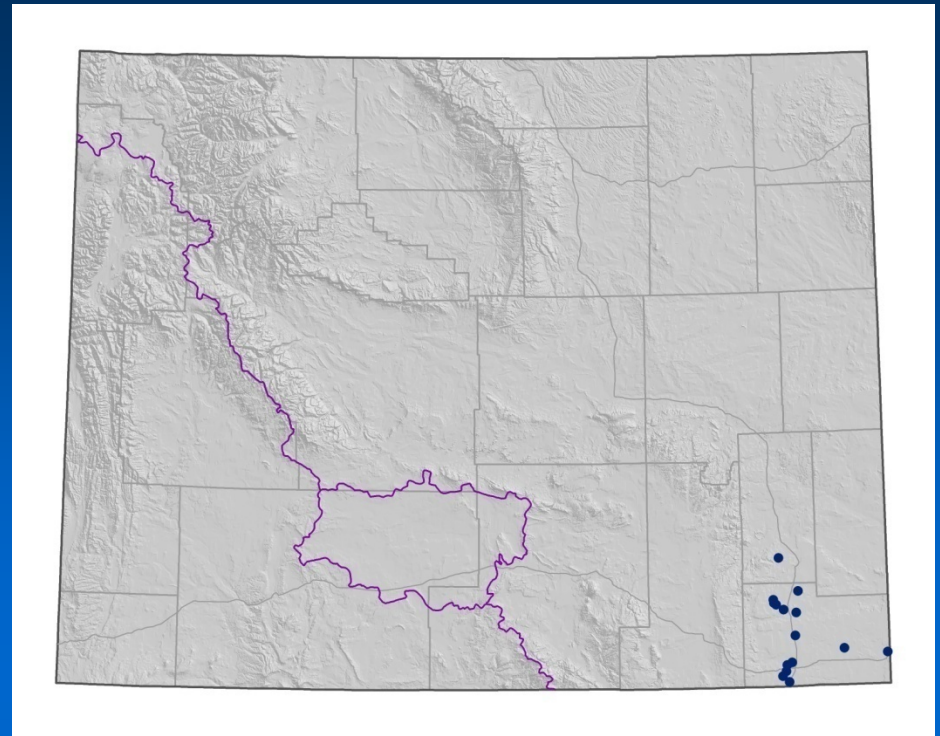
*Oenothera coloradensis*  
*ssp. coloradensis*  
= *Gaura neomexicana ssp. coloradensis*  
Colorado butterfly plant



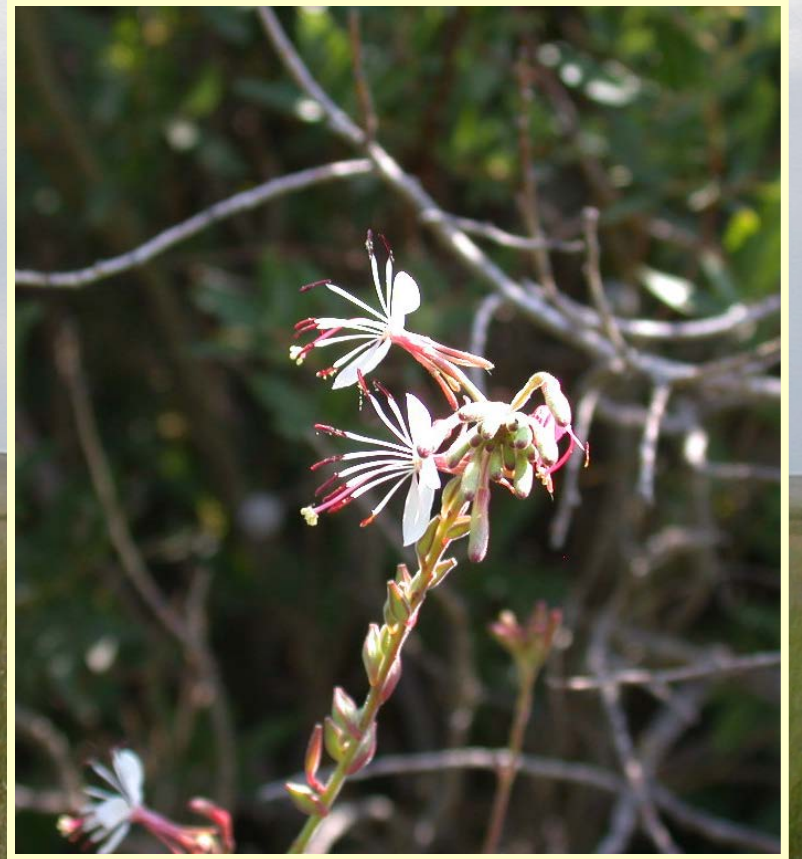
- Federal status: Threatened
- Heritage ranks: G3T2/S1
- Global distribution: Wyoming, Nebraska, and Colorado
- Last observed in Colorado: 2008
- Colorado occurrences: 14 (10 are historical)
- Colorado individuals: 11,000
- Primary threats: grazing, hydrological alterations, weeds, Interstate 25
- Land ownership: City of Fort Collins, private, state

*Oenothera coloradensis*  
*ssp. coloradensis*  
= *Gaura neomexicana* *ssp. coloradensis*  
Colorado butterfly plant

- Federal status: Threatened
- Heritage ranks: G3T2/S2
- Last observed in Wyoming: 2009
- Wyoming occurrences: 15
- Primary threats: subdivisions, water developments, exotic species
- Land ownership/management: F.E. Warren Air Force Base, State, Private







*Gaura neomexicana* ssp. *coloradensis*

# *Pediocactus knowltonii*

## Knowlton's cactus

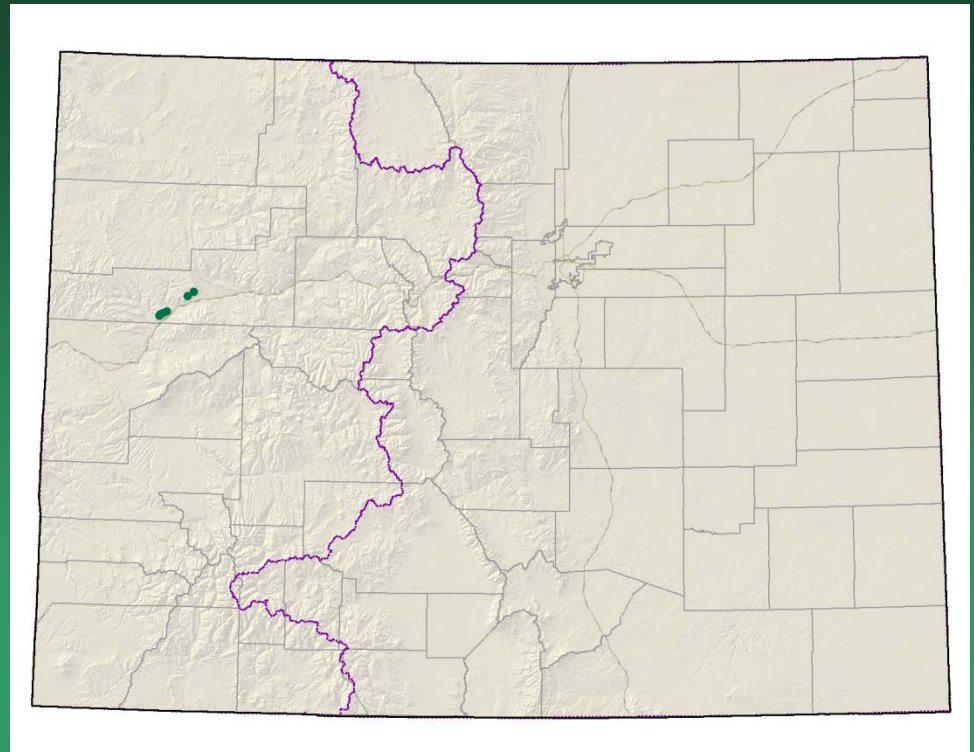
GIS analysis determined that the species does not actually occur in Colorado.

- Federal status: Endangered
- Heritage ranks: G1/SNA
- Global distribution: New Mexico
- Last observed in Colorado:
- Colorado occurrences: 0
- Individuals: 9,000 in NM
- Primary threats: cactus collection
- Land ownership: private, Ute



# *Penstemon debilis*

## Parachute penstemon



- Federal status: Candidate
- Heritage ranks: G1/S1
- Global distribution: Colorado endemic
- Last observed: 2009
- Occurrences: 7
- Individuals: 6,750
- Primary threats: oil and gas development, oil shale development, recreation
- Land ownership/management: private, BLM, DOE

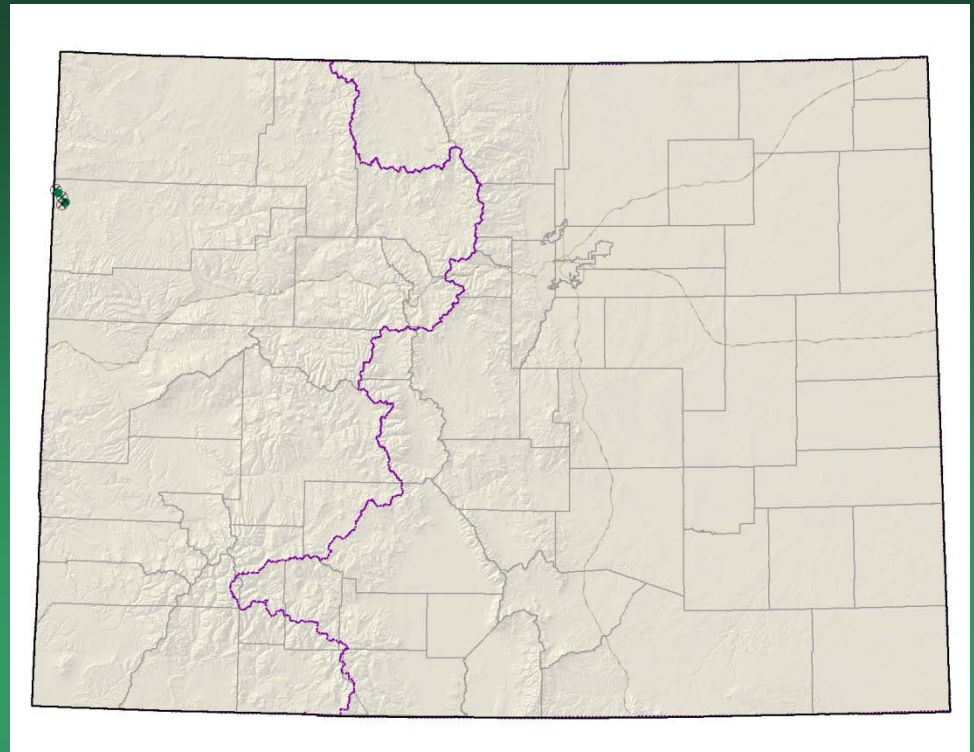




*Penstemon debilis*

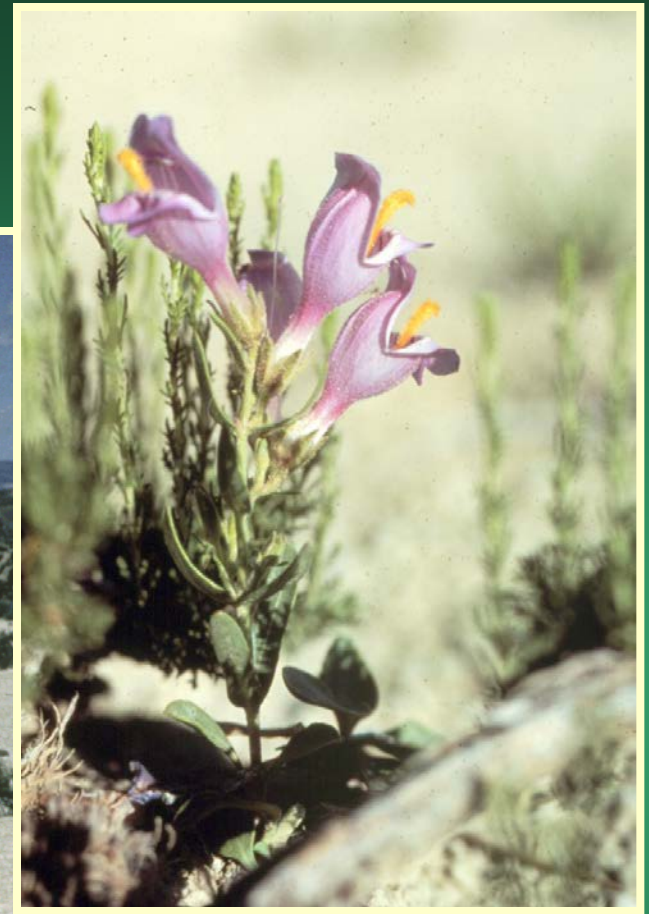


*Penstemon grahamii*  
Graham beardtongue



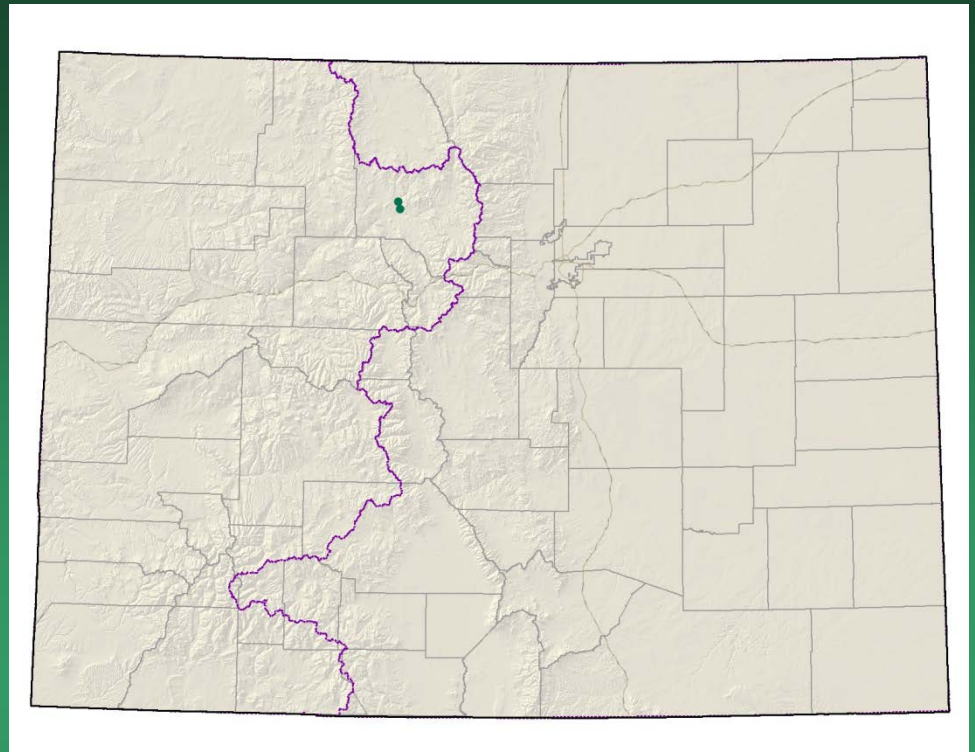
- Federal status: Removed from candidate list
- Heritage ranks: G2/S1
- Global distribution: Utah and Colorado (Rio Blanco County)
- Last observed in Colorado: 2003
- Colorado occurrences: 5 (3 are historical)
- Colorado individuals: 5,000
- Primary threats: oil and gas development, overgrazing
- Land ownership/management: BLM

*Penstemon grahamii*





*Penstemon penlandii*  
Penland beardtongue



- Federal status: Endangered
- Heritage ranks: G1/S1
- Global distribution: Colorado endemic
- Last observed: 2008
- Occurrences: 2
- Individuals: 5,000-8,000
- Primary threats: road maintenance (grading, spraying, snow plowing), ORV use
- Land ownership/management: BLM, private

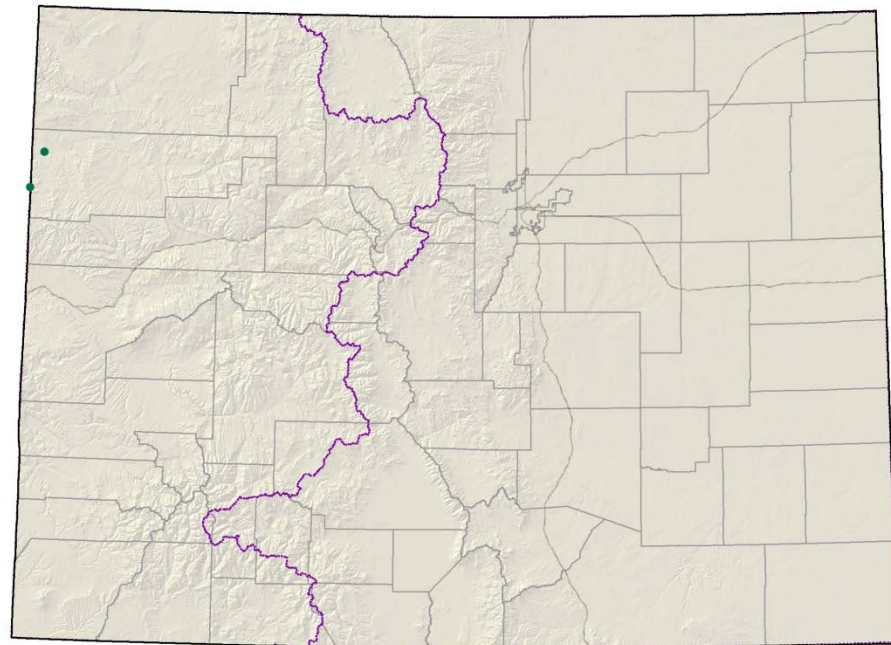


*Penstemon penlandii*





*Penstemon scariosus* var.  
*albifluvis*  
White River penstemon



- Federal status: Candidate
- Heritage ranks: G4T1/S1
- Global distribution: Utah and Colorado
- Last observed in Colorado: 1999
- Colorado occurrences: 2
- Colorado individuals: 50-100
- Primary threats: overgrazing, oil and gas development, ORV use
- Land ownership/management: BLM, private

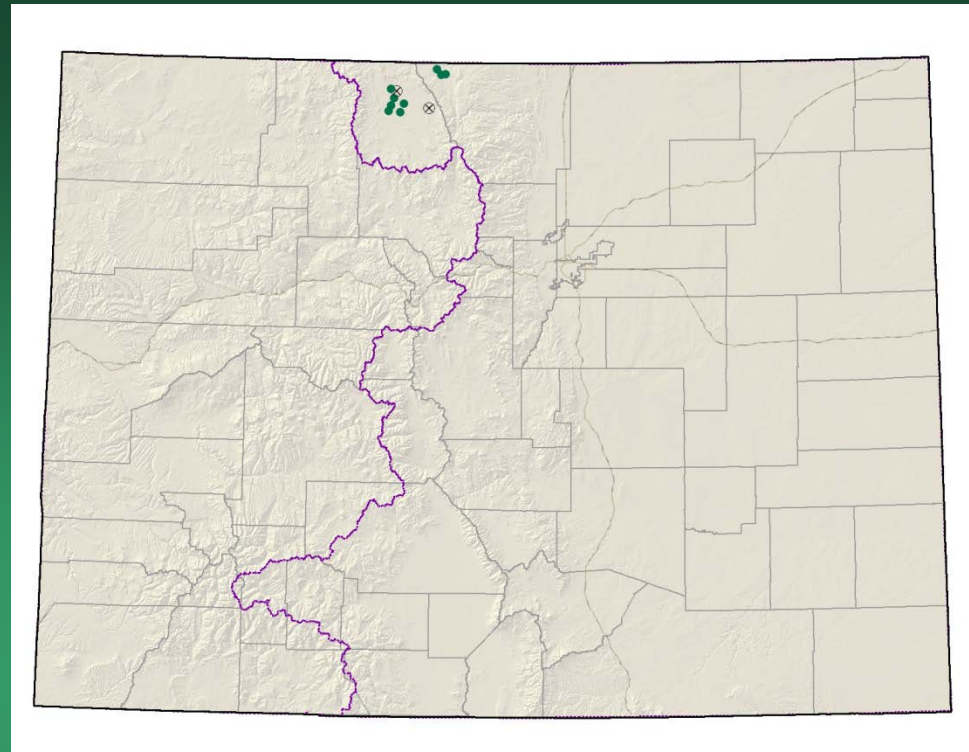


*Penstemon scariosus* var. *albifluvis*



# *Phacelia formosula*

## North Park phacelia



- Federal status: Endangered
- Heritage ranks: G1/S1
- Global distribution: Colorado endemic
- Last observed: 2009
- Occurrences: 11 (2 are historical)
- Individuals: 8,000
- Primary threats: ORV use, coal extraction, overgrazing, oil and gas development
- Land ownership/management: BLM, private, USFWS



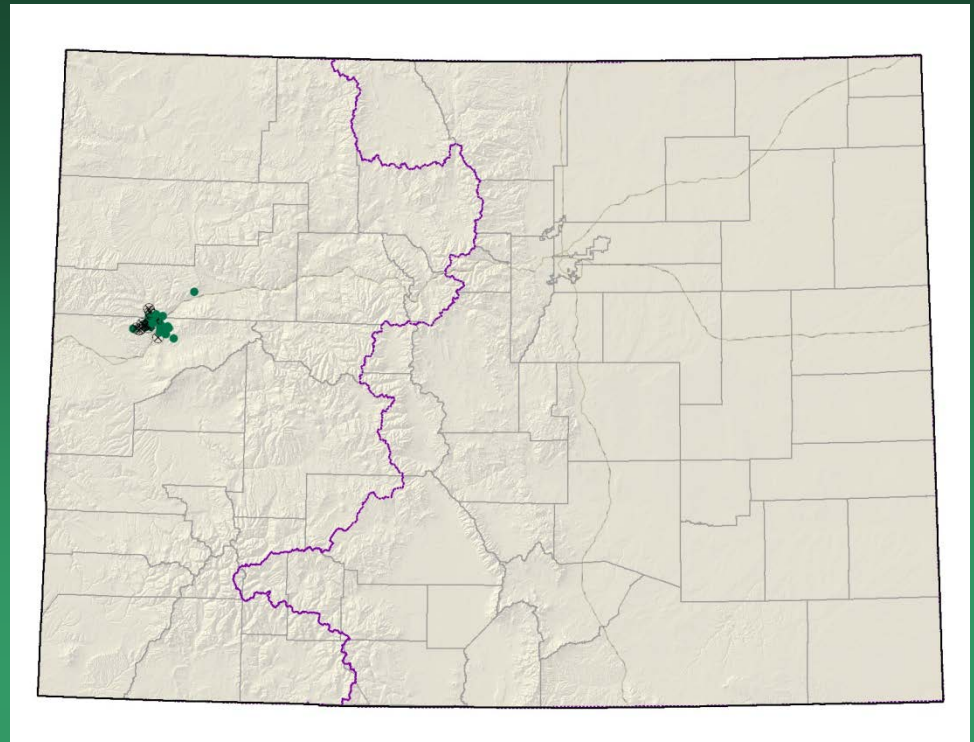


*Phacelia formosula*



# *Phacelia submutica*

## DeBeque phacelia



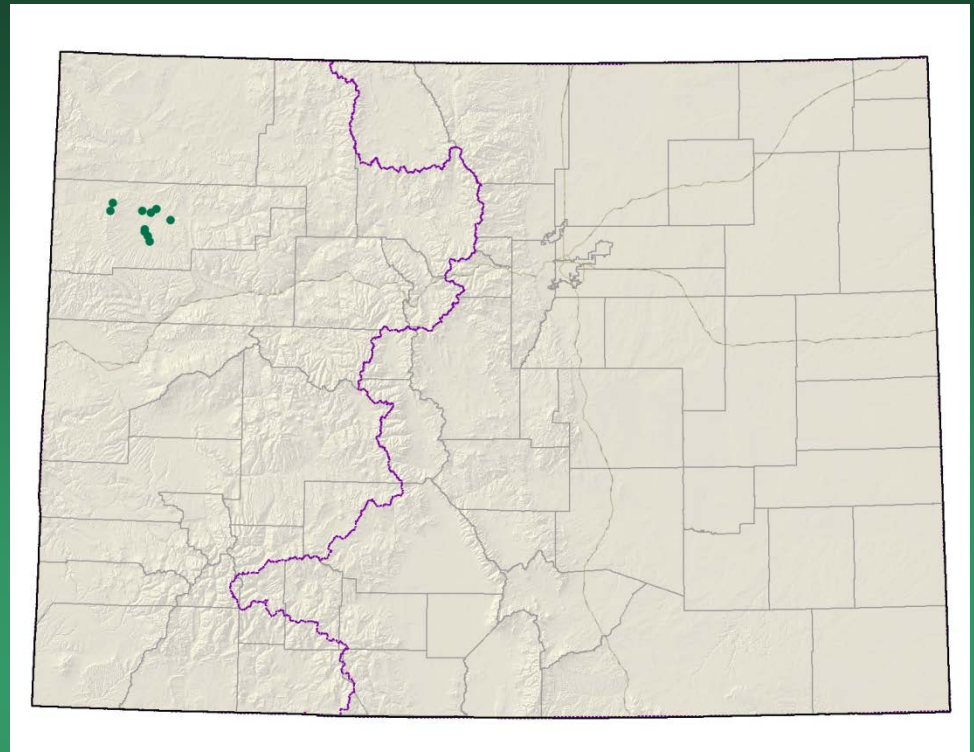
- Federal status: Candidate
- Heritage ranks: G4T2/S2
- Global distribution: Colorado endemic
- Last observed: 2009
- Occurrences: 35 (13 are historical)
- Individuals: 25,000
- Primary threats: oil and gas development, ORV use, overgrazing, oil shale mining
- Land ownership/management: BLM, private, USFS, DOD



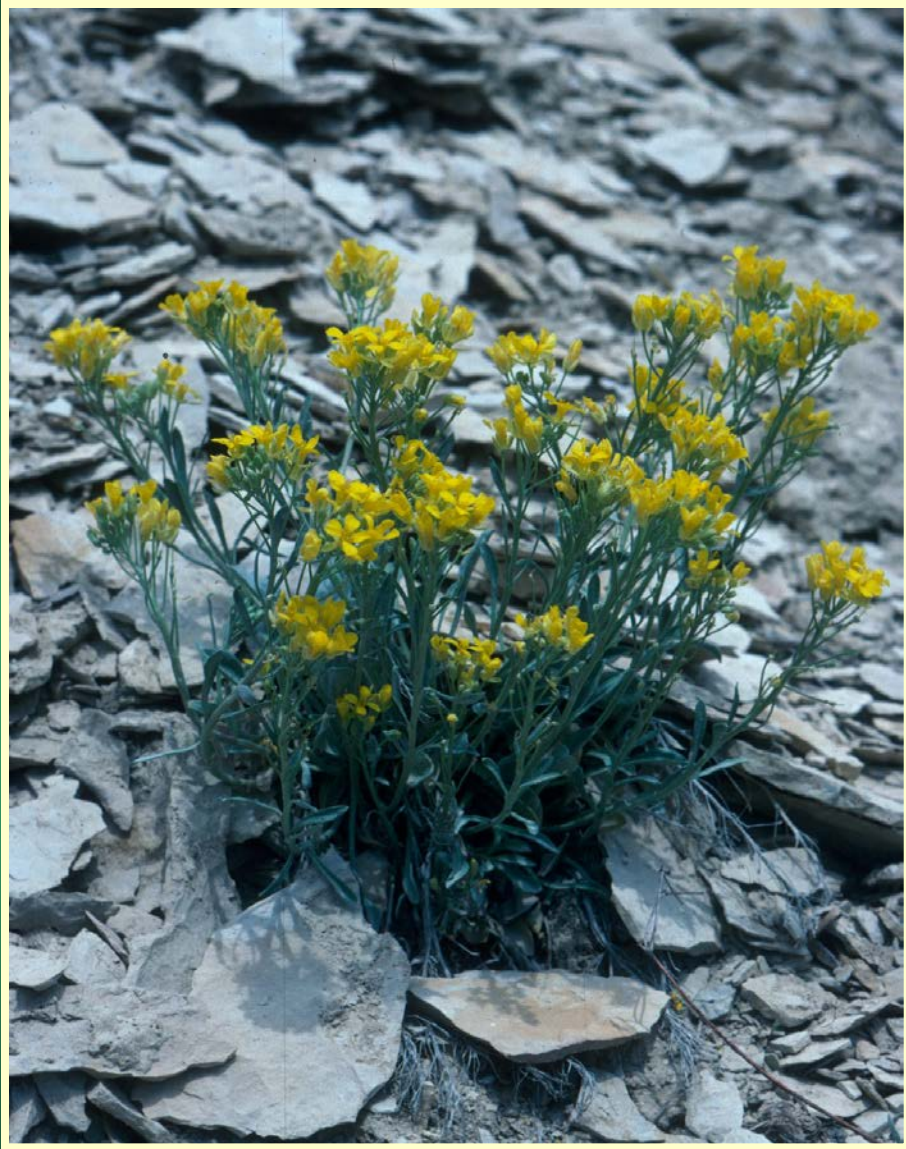
*Phacelia submutica*



*Physaria obcordata*  
Piceance twinpod



- Federal status: Threatened
- Heritage ranks: G1G2/S1S2
- Global distribution: Colorado endemic
- Last observed: 2008
- Occurrences: 10
- Individuals: 23,000
- Primary threats: oil and gas development, oil shale and nahcolite mining, ORV use, trampling by wild horses
- Land ownership/management: BLM, state, private

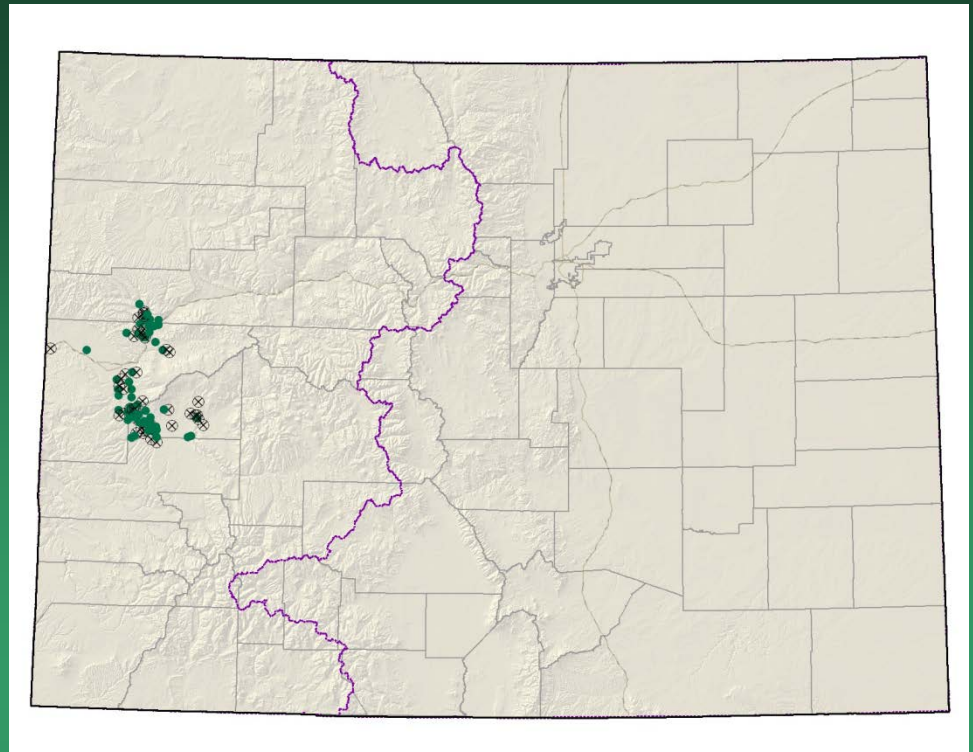


*Physaria obcordata*





# *Sclerocactus glaucus* Uinta Basin hookless cactus



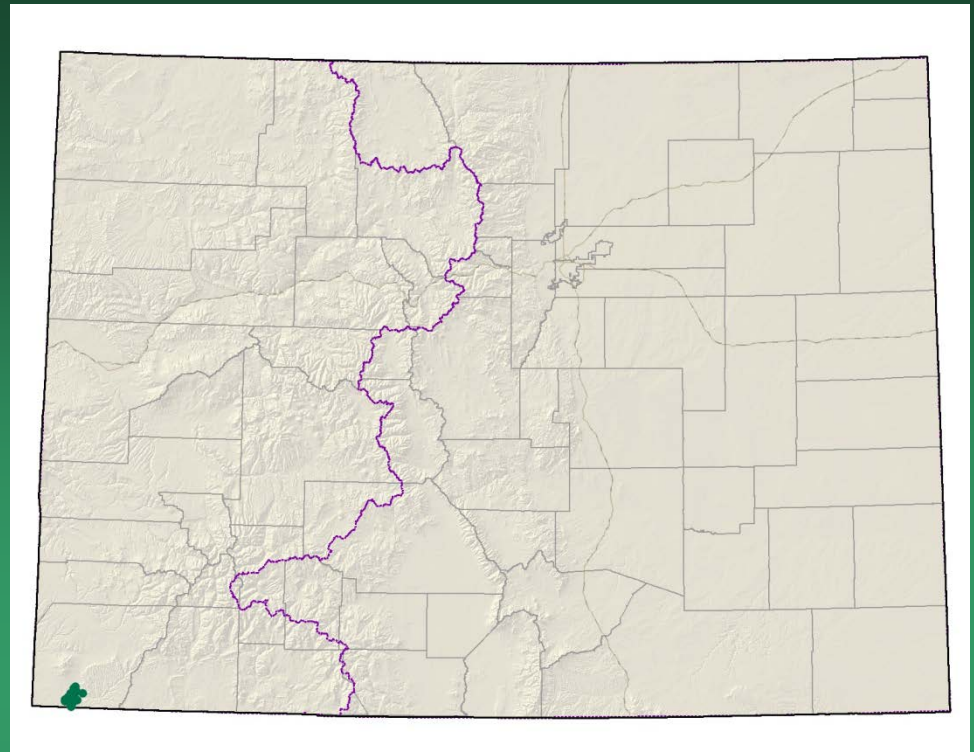
- Federal status: Threatened
- Heritage ranks: G3/S3
- Global distribution: Colorado
- Last observed in Colorado: 2008
- Colorado occurrences: 98 (47 are historical)
- Colorado individuals: 7600
- Primary threats: oil and gas development, residential development, cactus collecting
- Land ownership/management: BLM, state, private



*Sclerocactus glaucus*



*Sclerocactus mesae-verdae*  
Mesa Verde cactus



- Federal status: Threatened
- Heritage ranks: G2/S2
- Global distribution: New Mexico and Colorado
- Last observed in Colorado: 2005
- Colorado occurrences: 22 – probably a single large occurrence
- Colorado individuals: 2,000-10,000
- Primary threats: cactus collecting, oil and gas development, ORV use
- Land ownership/management: Ute Mountain Ute



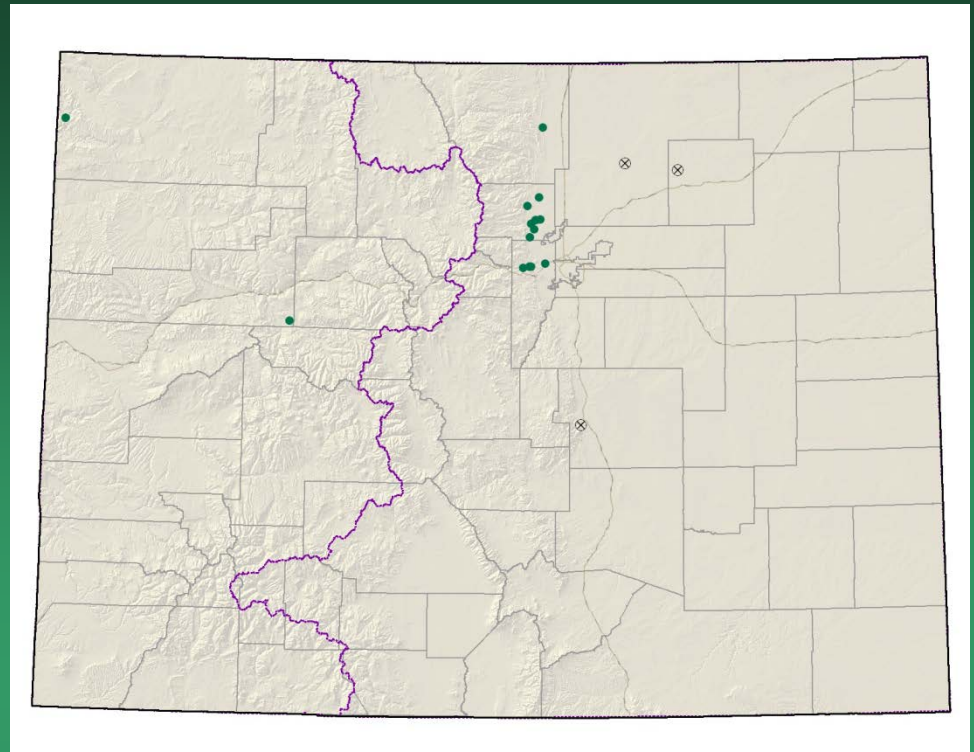


*Sclerocactus mesae-verdae*



# *Spiranthes diluvialis*

## Ute ladies'-tresses

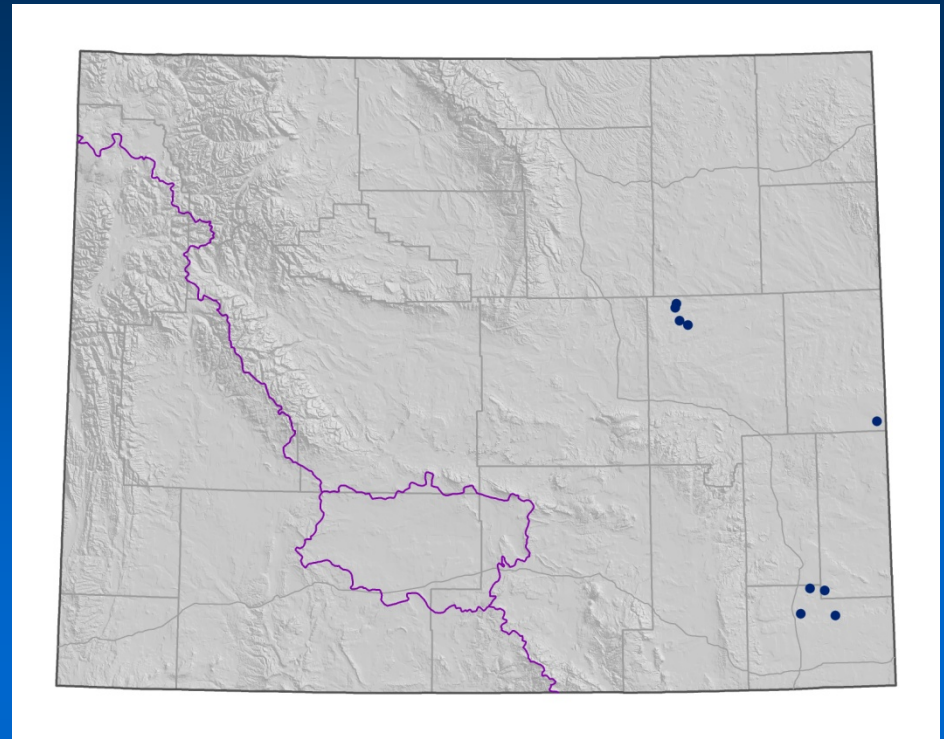


- Federal status: Threatened
- Heritage ranks: **G2G3/S2**
- Global distribution: Washington, Idaho, Montana, Wyoming, Nevada, Utah, Nebraska, and Colorado
- Last observed in Colorado: **2008**
- Colorado occurrences: **16 (2 are historical)**
- Colorado individuals: 5,000-10,000
- Primary threats: weeds, residential development, hydrological alterations
- Land ownership/management: NPS, City of Fort Collins, City of Boulder, City of Wheat Ridge, Jefferson County, USFWS, Private, BLM, City of Carbondale

# *Spiranthes diluvialis*

## Ute ladies'-tresses

- Federal status: Threatened
- Heritage ranks: G2G3/S1S2
- Last observed in Wyoming: 2009
- Wyoming occurrences: 9
- Primary threats: energy and water developments, exotic species, subdivisions
- Land ownership/management: BLM Casper FO, BLM Rawlins FO, State, Private





*Spiranthes diluvialis*



New taxa petitioned for listing under ESA as of Aug 18, 2009  
(Federal Register 74:158 pp 41649-41662)

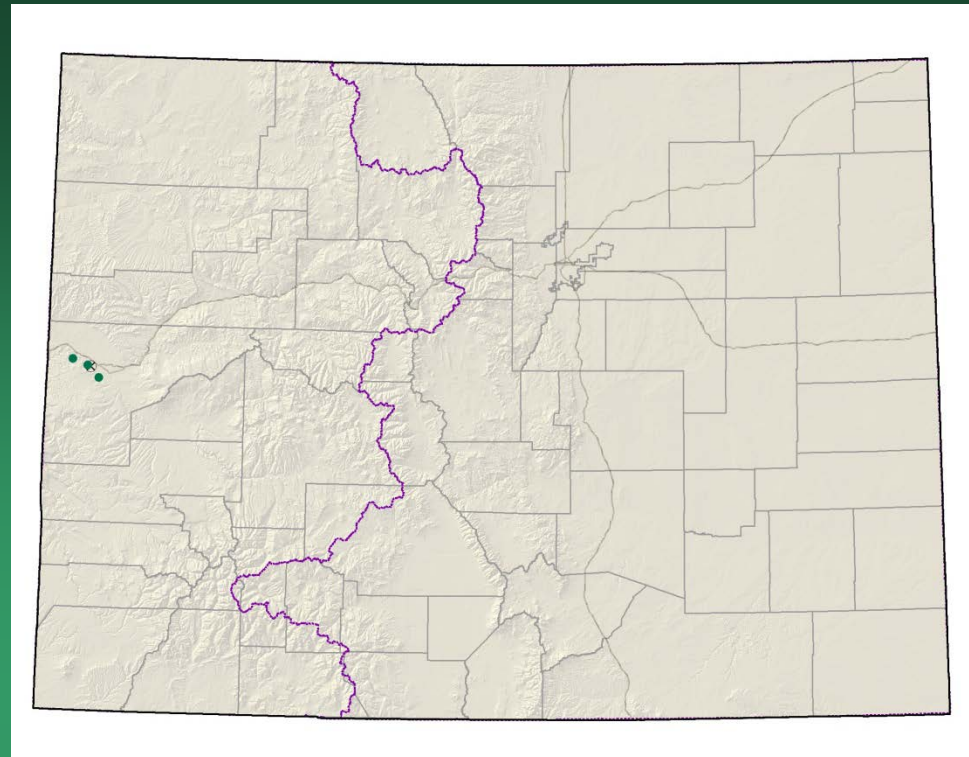
<b>Scientific name</b>	<b>Common name</b>	<b>Distribution</b>	<b>CO counties</b>
<i>Astragalus hamiltonii</i> ( <i>Astragalus lonchocarpus</i> var. <i>hamiltonii</i> )	Hamilton milkvetch	CO, UT	Moffat
<i>Astragalus microcymbus</i>	Skiff milkvetch	CO	Gunnison & Saguache
<i>Astragalus schmolliae</i>	Schmoll milkvetch	CO	Montezuma
<i>Corispermum navicula</i>	Boat-shaped bugseed	CO	Jackson
<i>Draba weberi</i>	Weber whitlowgrass	CO	Summit
<i>Eriogonum brandegeei</i>	Brandegee's wild buckwheat	CO	Chaffee & Fremont
<i>Lomatium latilobum</i> * ( <i>Aletes latilobus</i> )	Canyonlands lomatium	CO, UT	Mesa
<i>Lygodesmia doloresensis</i> *	Dolores River	CO, UT	Mesa
<i>Penstemon gibbensii</i>	Gibben's beardtongue	CO, UT, WY	Moffat

\* Petition does not present sufficient information to indicate listing is warranted.



2005  
Pagosa Springs  
Statewide  
G1 species

*Aletes latilobus*=  
*Lomatium latilobum*  
Canyonlands biscuitroot



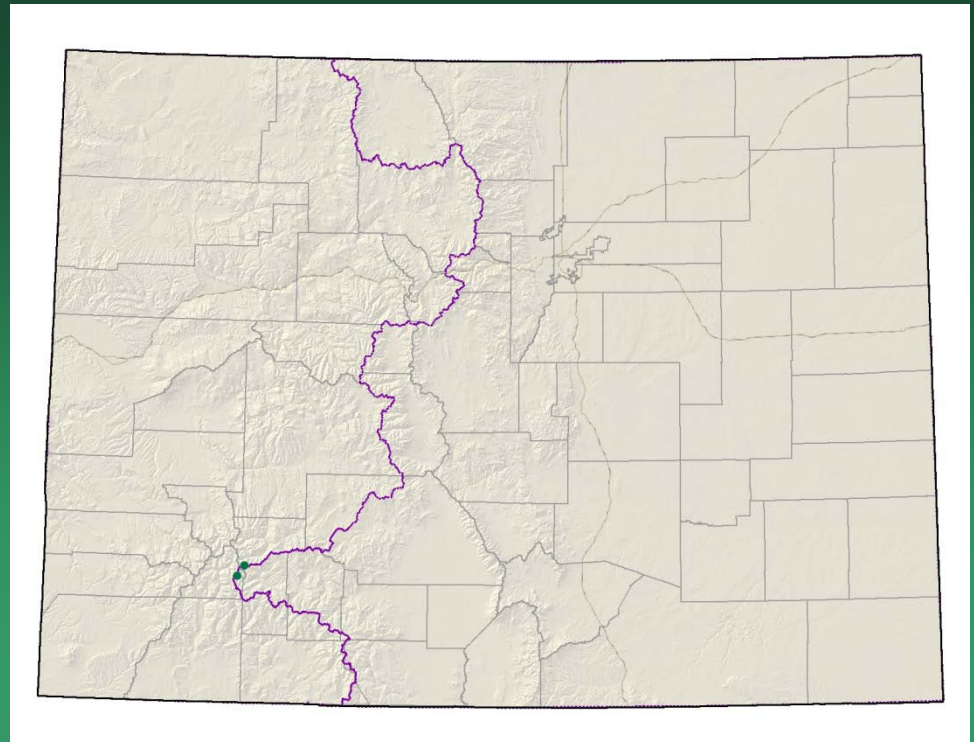
- Federal status: BLM sensitive
- Heritage ranks: G1/S1
- Global distribution: Utah (Grand and San Juan counties) and Colorado (Mesa County-- Colorado National Monument and Rattlesnake Canyon)
- Last observed in Colorado: 1997
- Colorado occurrences: 4 (1 is historical)
- Colorado individuals: >5,000
- Primary threats: Habitat disturbance, Park developments, trampling by hikers
- Land ownership/management: Colorado National Monument, BLM, possibly on adjacent private



*Aletes latilobus*



*Aliciella sedifolia*  
=*Gilia sedifolia*  
Stonecrop gilia



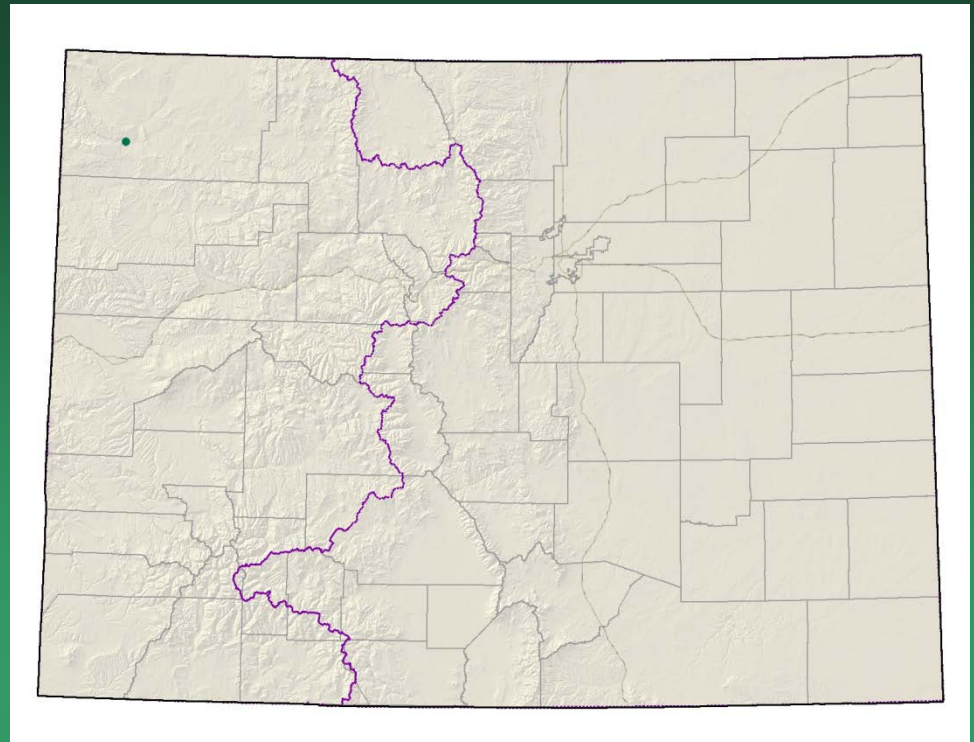
- Federal status: USFS sensitive
- Heritage ranks: G1/S1
- Global distribution: Colorado endemic, San Juan Mountains, Hinsdale County
- Last observed: 2007
- Occurrences: 2
- Individuals: 1,100
- Primary threats: non-motorized recreation
- Land ownership/management: Gunnison and possibly San Juan National Forest



*Aliciella sedifolia*



*Astragalus lonchocarpus* var.  
*hamiltonii*  
=*A. hamiltonii*  
Hamilton's milkvetch



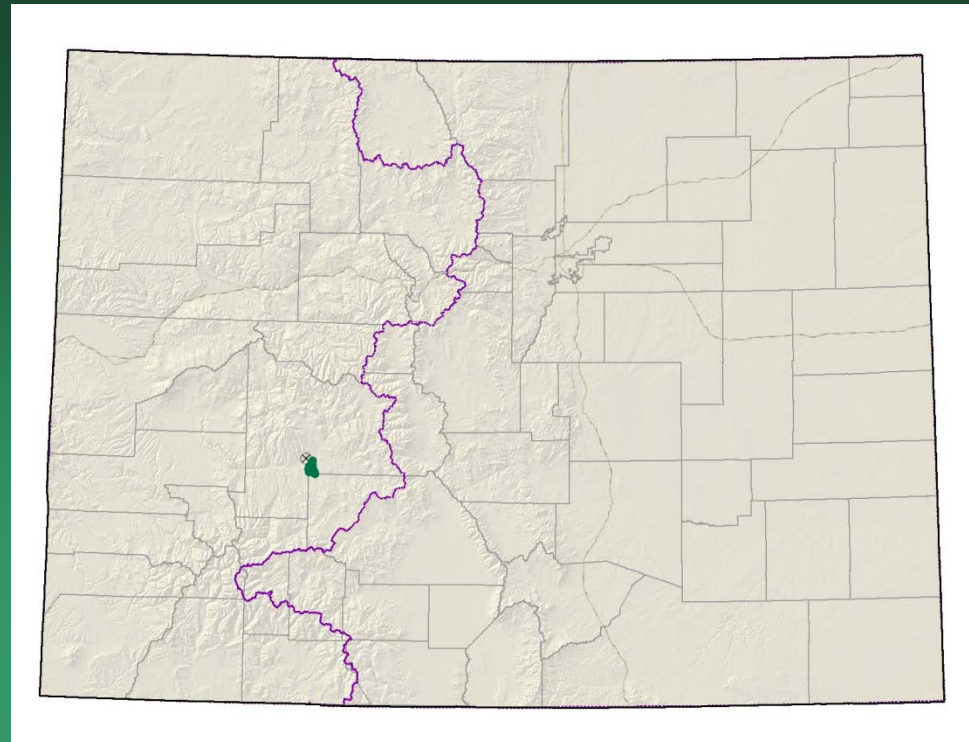
- Federal status: BLM sensitive
- Heritage ranks: G1/S1
- Global distribution: Uintah County, Utah and Moffat County, Colorado
- Last observed in Colorado: 1991
- Colorado occurrences: 1
- Colorado individuals: 12
- Primary threats: unknown, area heavily grazed in past, OHV and oil & gas development for UT occurrences.
- Land ownership/management: Dinosaur NM in CO and UT; National Wildlife Refuge, Ute, BLM, State, and private in UT



*Astragalus lonchocarpus*  
var. *hamiltonii*



# *Astragalus microcymbus* Skiff milkvetch



- Federal status: BLM sensitive
- Heritage ranks: G1/S1
- Global distribution: Colorado endemic, South Beaver Creek, Gunnison and Saguache counties
- Last observed: 2008
- Occurrences: 4 (2 are historical)
- Individuals: 10,332
- Primary threats: recreation, grazing by cattle and rabbits, mining, residential development
- Land ownership/management: BLM (most occurrences within a BLM ACEC and South Beaver Creek Natural Area), private



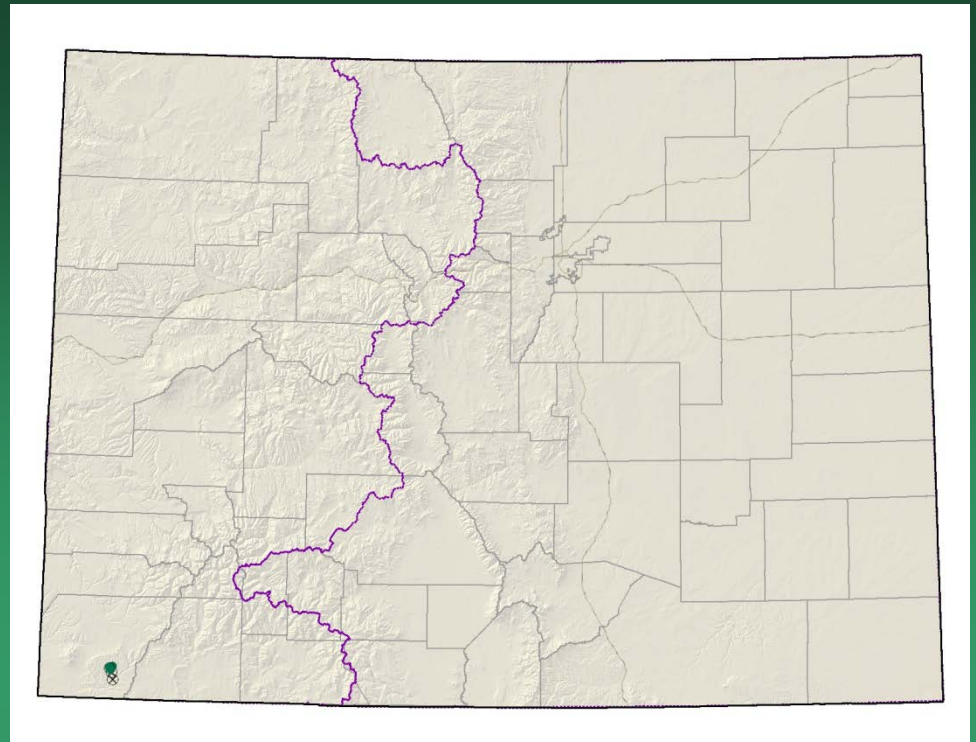
*Astragalus microcymbus*





# *Astragalus schmolliae* Schmoll's milkvetch

- Federal status: none
- Heritage ranks: G1/S1
- Global distribution: Colorado endemic, Chapin Mesa, Montezuma County
- Last observed: 2005
- Occurrences: 6 (3 are historical)
- Individuals: 294,499 in Mesa Verde, Tribal lands unsurveyed
- Primary threats: Noxious weed invasions, Park developments, grazing and road construction outside NP
- Land ownership/management: Mesa Verde National Park, Ute Mountain Ute Tribal lands



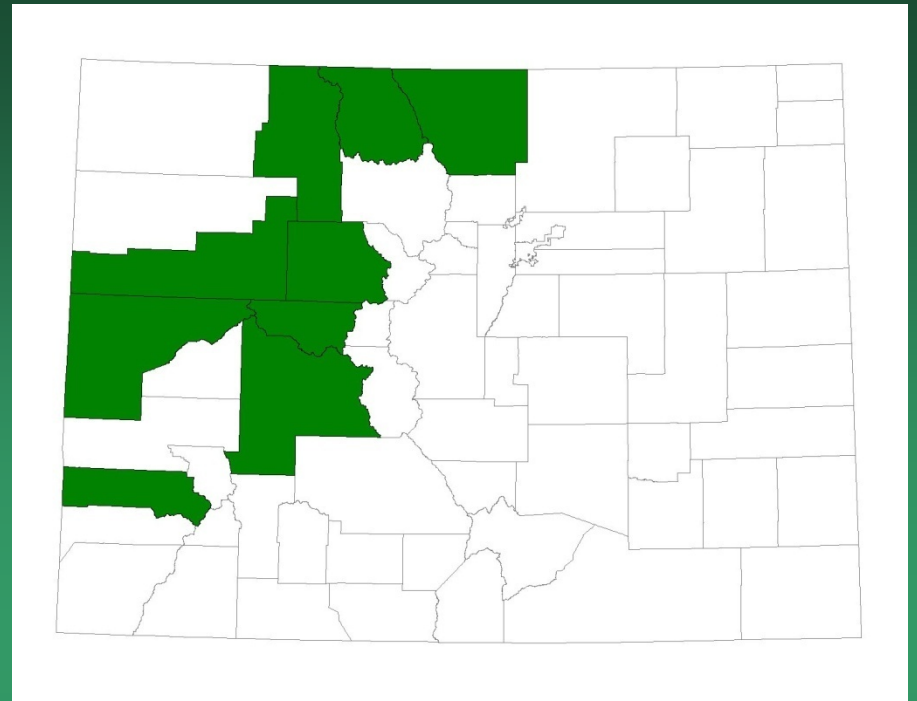


*Astragalus schmolliae*





*Cirsium scapanolepis*  
Mountain slope thistle



- Federal status: none
- Heritage ranks: G1G2Q/S1
- Global distribution: Colorado endemic
- Last observed in Colorado: 1900-1983?
- Colorado occurrences: unknown, obscure
- Colorado individuals: unknown
- Primary threats: weevils, unknown
- Land ownership/management: unknown

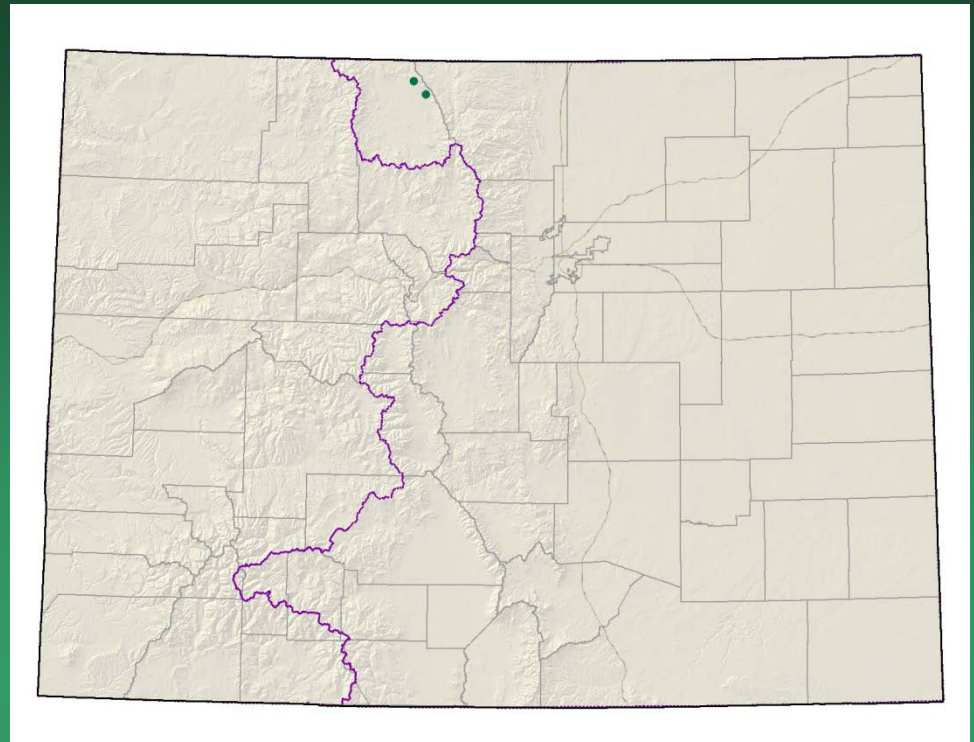


*Cirsium scapanolepis*



# *Corispermum navicula*

## Crescent bugseed



- Federal status: none
- Heritage ranks: G1?/S1
- Global distribution: Colorado endemic (Jackson County), possibly Oklahoma?
- Last observed: 2006
- Occurrences: 2 principal occurrences
- Individuals: common locally
- Primary threats: off-road vehicle use
- Land ownership/management: BLM, Kremmling Field Office

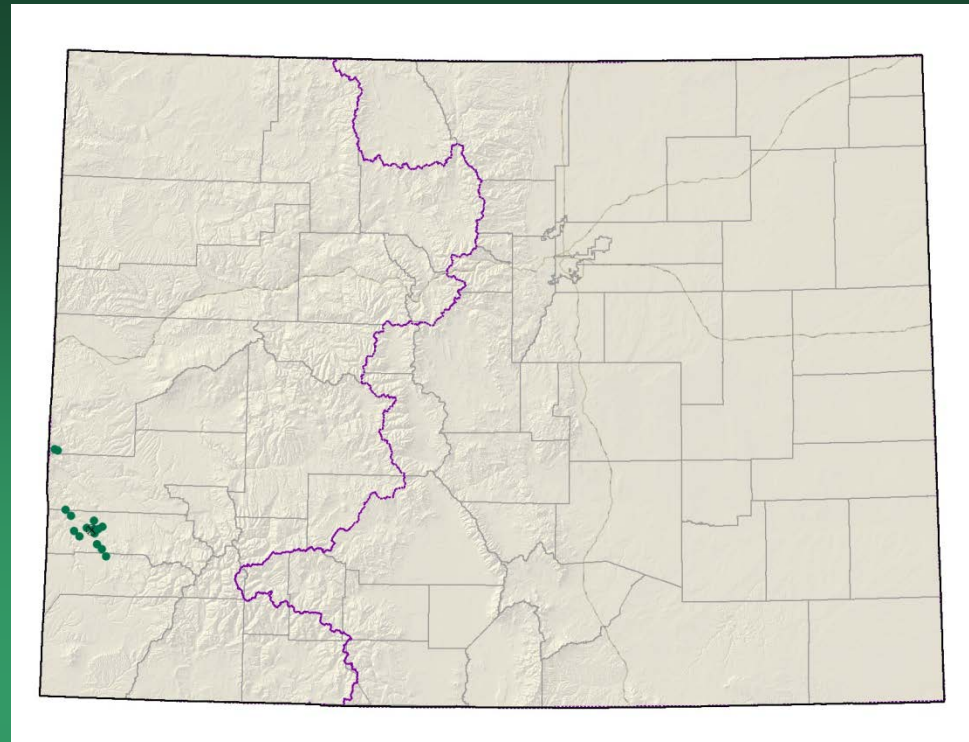


*Corispermum navicula*



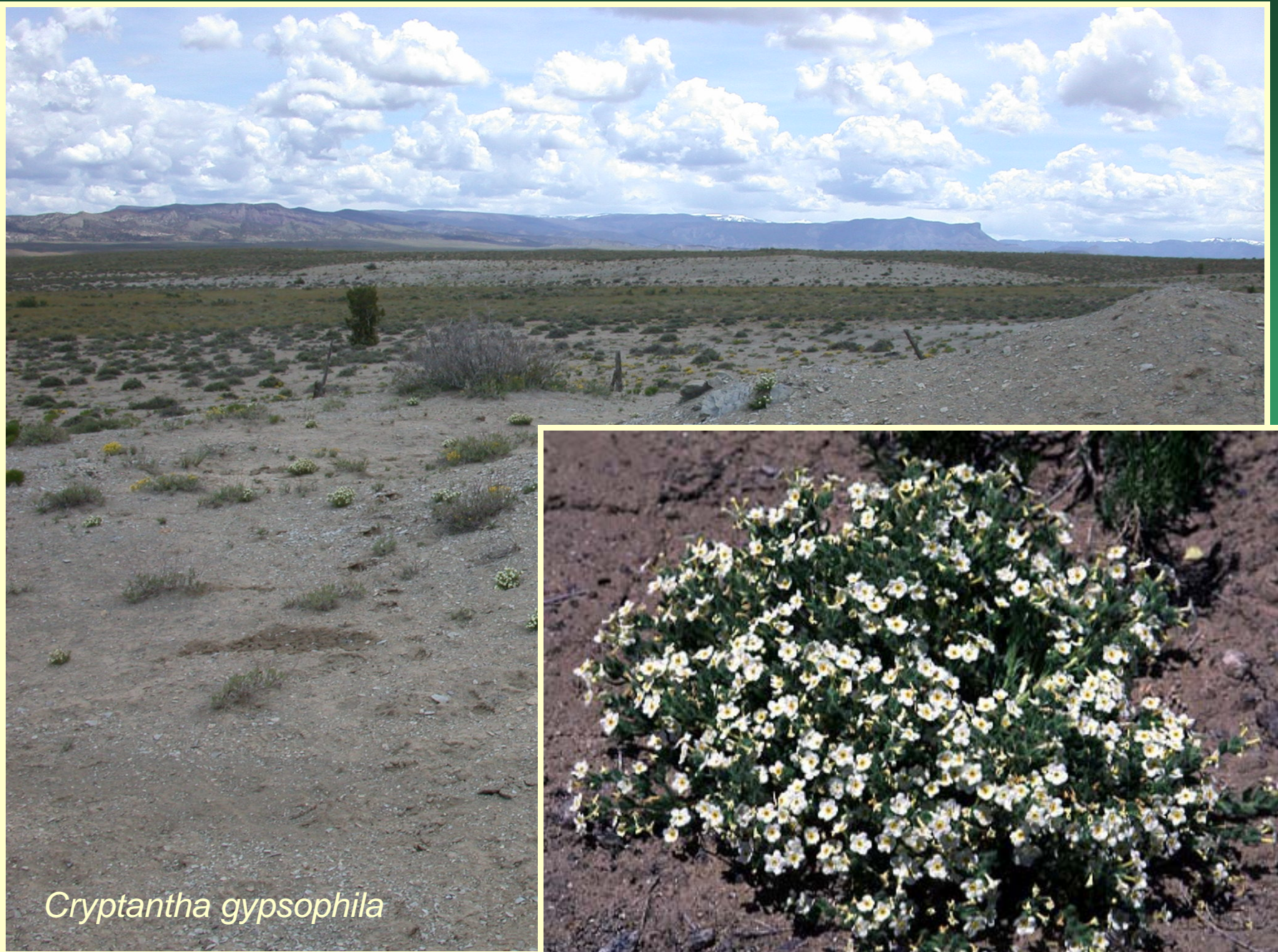
# *Cryptantha gypsophila*

## Gypsum Valley Cat-eye



- Federal status: none
- Heritage ranks: G1G2/S1S2
- S2Global distribution: Colorado endemic, Mesa, Montrose & San Miguel Counties
- Last observed: 2008
- Occurrences: 16
- Individuals: 25,100+
- Primary threats: oil and gas development, grazing, ATVs, recreation, roads
- Land ownership/management: BLM, Private

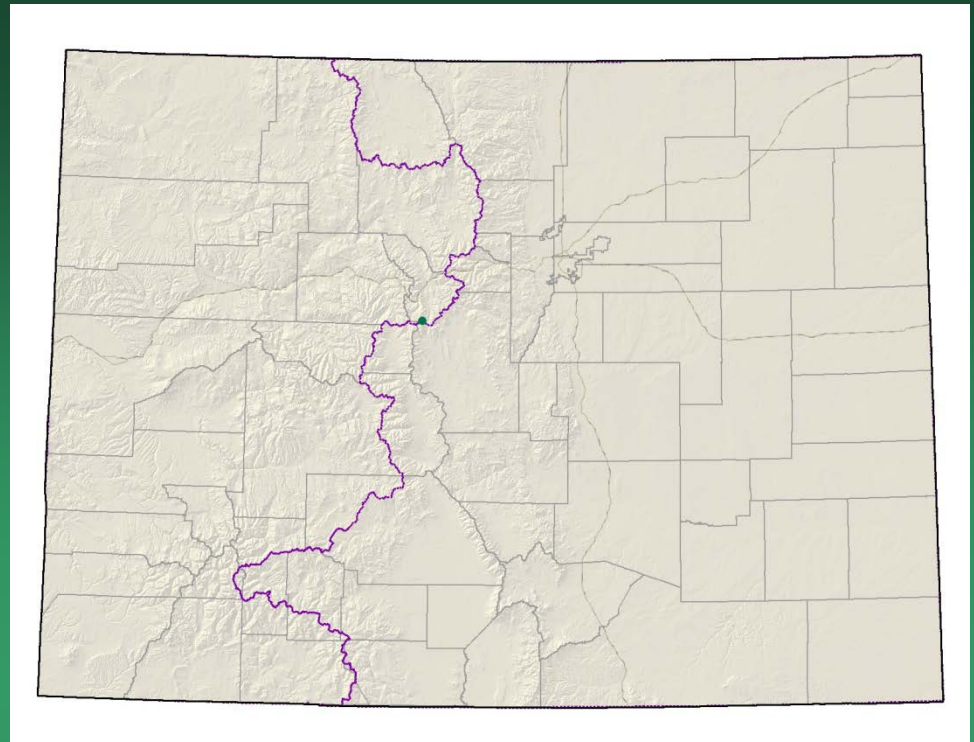




*Cryptantha gypsophila*



# *Draba weberi* Weber's draba



- Federal status: none
- Heritage ranks: G1/S1
- Global distribution: Colorado endemic, Monte Cristo Creek drainage in Summit County
- Last observed: 2009
- Occurrences: 1
- Individuals: 20-100
- Primary threats: road and dam construction and maintenance, environmental stochasticity, recreation, mining, noxious weeds, climate change
- Land ownership/management: private (Colo. Spgs. Utilities)

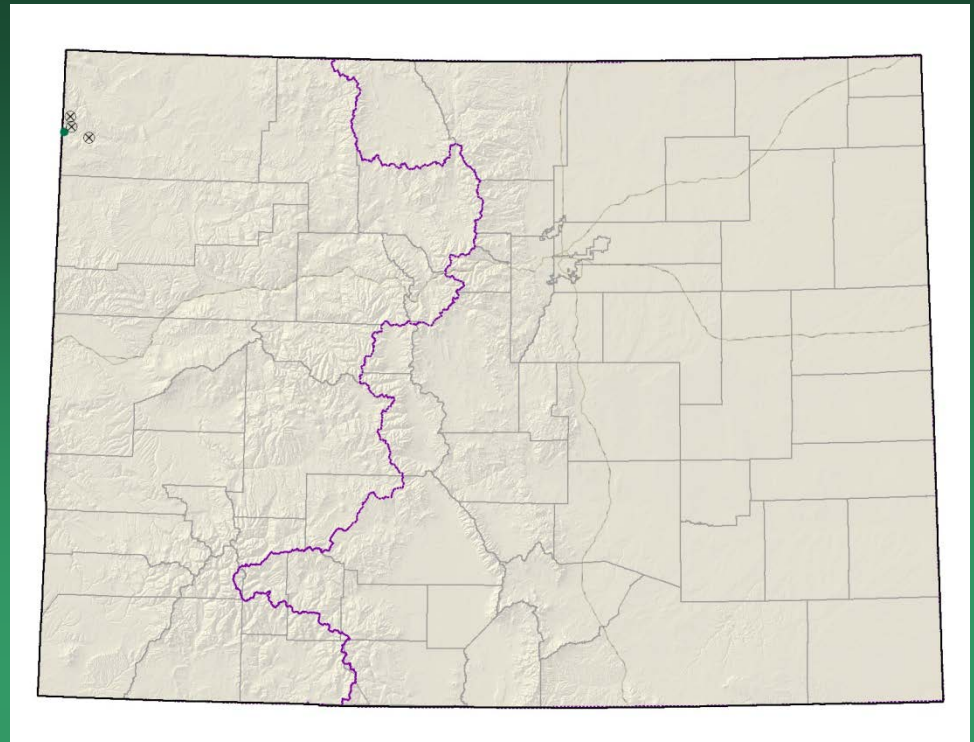


*Draba weberi*





# *Erigeron wilkenii* Dieter's fleabane



- Federal status: none
- Heritage ranks: G1/S1
- Global distribution: endemic to Colorado (Dinosaur National Monument, Moffat County)
- Last observed: 1995
- Occurrences: 4 (3 are historical)
- Individuals: 1,000-3,000
- Primary threats: no specific threats known
- Land ownership: Dinosaur NM



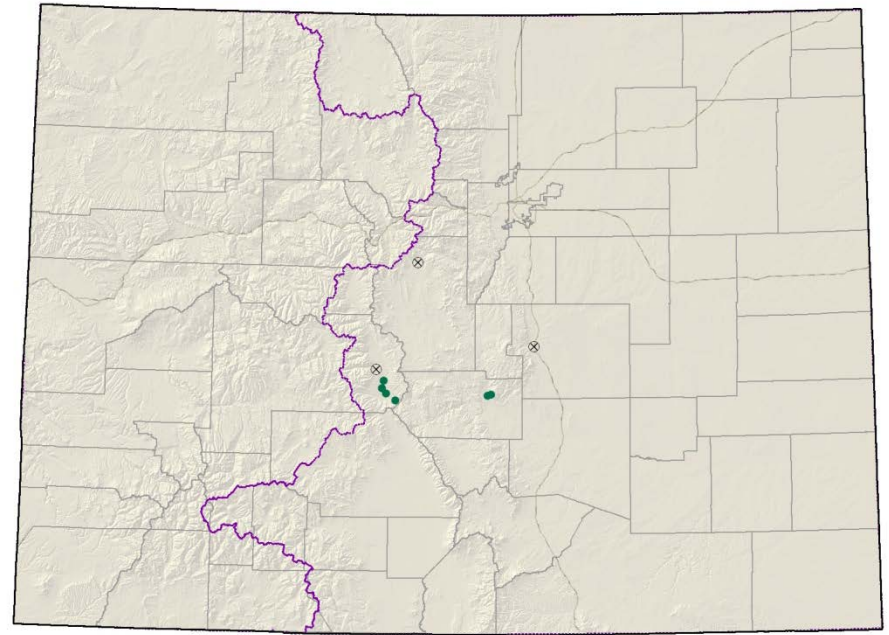
*Erigeron wilkenii*



# *Eriogonum brandegeei*

## Brandegee's buckwheat

- Federal status: USFS & BLM sensitive
- Heritage ranks: G1G2/S1S2
- Global distribution: Colorado endemic, Chaffee and Fremont counties
- Last observed: 2008
- Individuals: 35,000-several million
- Occurrences: 9 (3 are historical)
- Primary threats: off-road vehicle use and other recreation, residential and commercial development, timbering, mining, highway maintenance, weeds, grazing
- Land ownership/management: BLM (some within ACECs), state, private, highway right of way



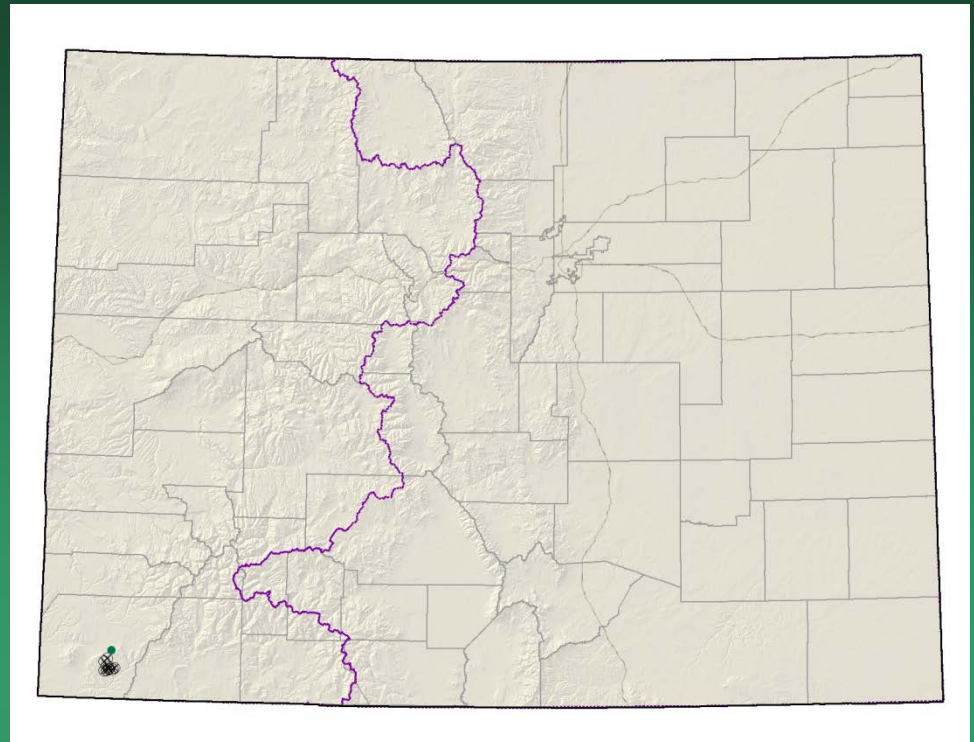




*Eriogonum brandegeei*

# *Hackelia gracilenta*

## Mesa Verde stickseed



- Federal status: none
- Heritage ranks: G1/S1
- Global distribution: Colorado endemic, Mesa Verde National Park, Montezuma County
- Last observed: 1997
- Occurrences: 10 (9 are historical)
- Individuals: unknown, may be <1000
- Primary threats: Unknown, possibly recreation, and/or developments in the Park, such as trails or roads. Fires may have had an impact on this species.
- Land ownership/management: Mesa Verde NP

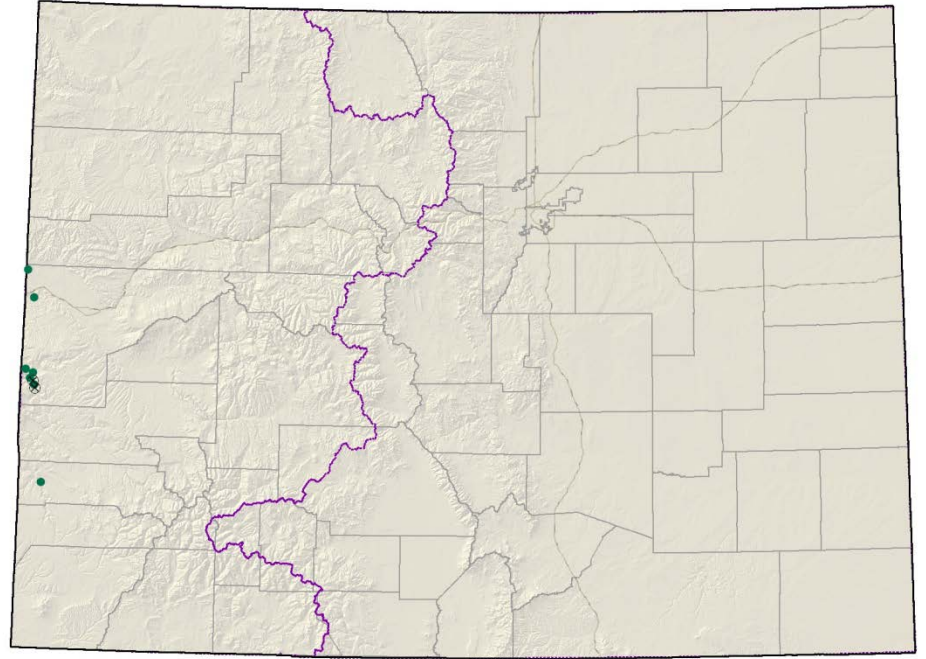


*Hackelia gracilentia*





*Lygodesmia doloresensis*  
Dolores River  
skeletonplant



- Federal status: BLM sensitive in CO
- Heritage ranks: G1G2/S1
- Global distribution: Utah and Colorado (Mesa County)
- Last observed in Colorado: 2008
- Colorado occurrences: 10 (3 are historical)
- Colorado individuals: 2470
- Primary threats: deer, rabbit, and cattle grazing, private land development, road maintenance, weeds
- Land ownership/management: private, BLM





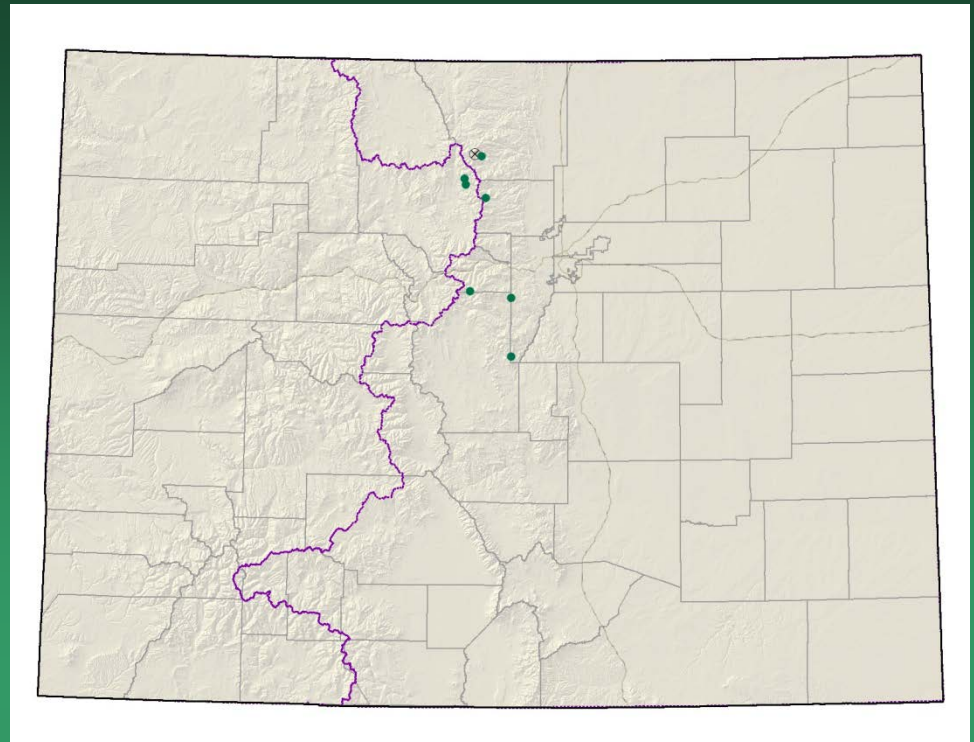
*Lygodesmia doloresensis*



# *Mimulus gemmiparus*

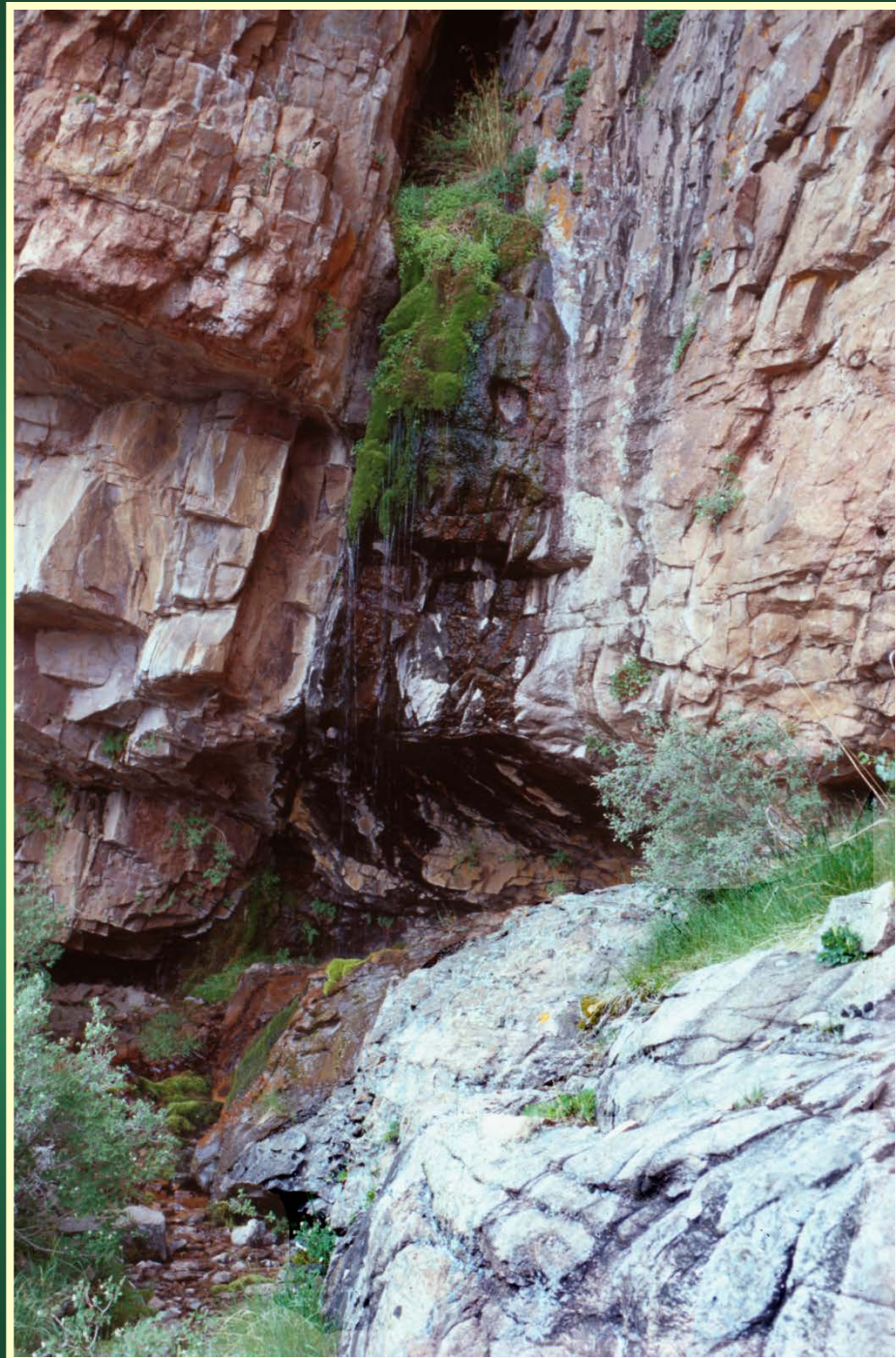
## Budding monkeyflower

- Federal status: USFS sensitive
- Heritage ranks: G1/S1
- Global distribution: Colorado endemic, Boulder, Clear Creek, Jefferson, Grand, and Larimer counties
- Last observed: 2006
- Occurrences: 8
- Individuals: >125,000
- Primary threats: recreational activities, trampling, competition from other plants, interference with hydrology
- Land ownership/management: Rocky Mountain NP, Pike and Arapaho Roosevelt National Forests



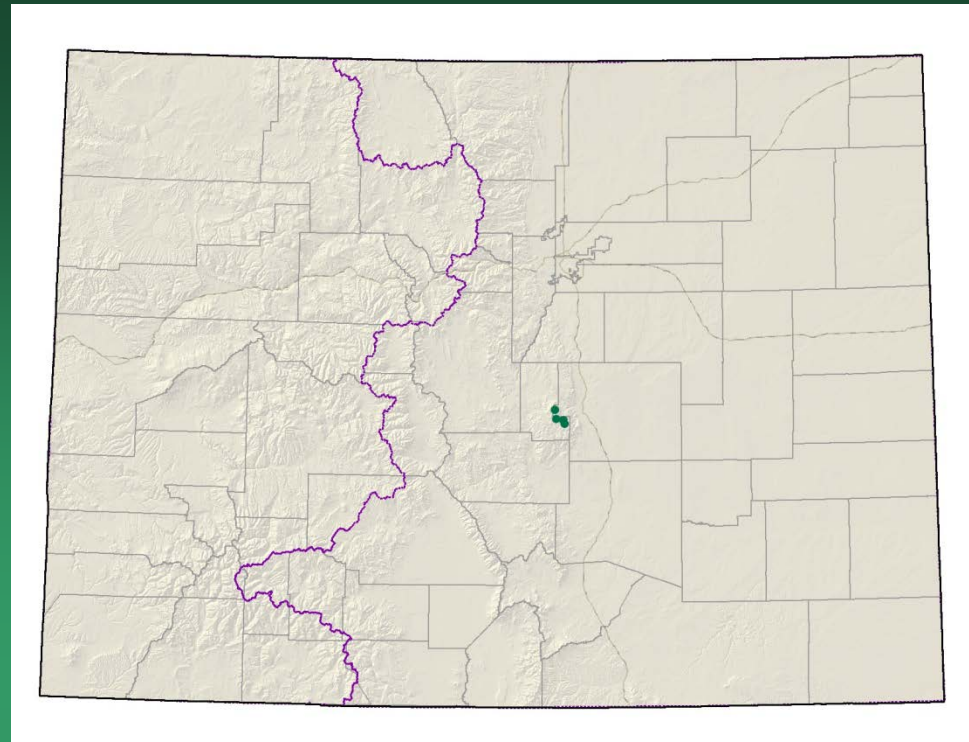


*Mimulus gemmiparus*





*Oreoxis humilis*  
Pike's Peak alpine  
parsley



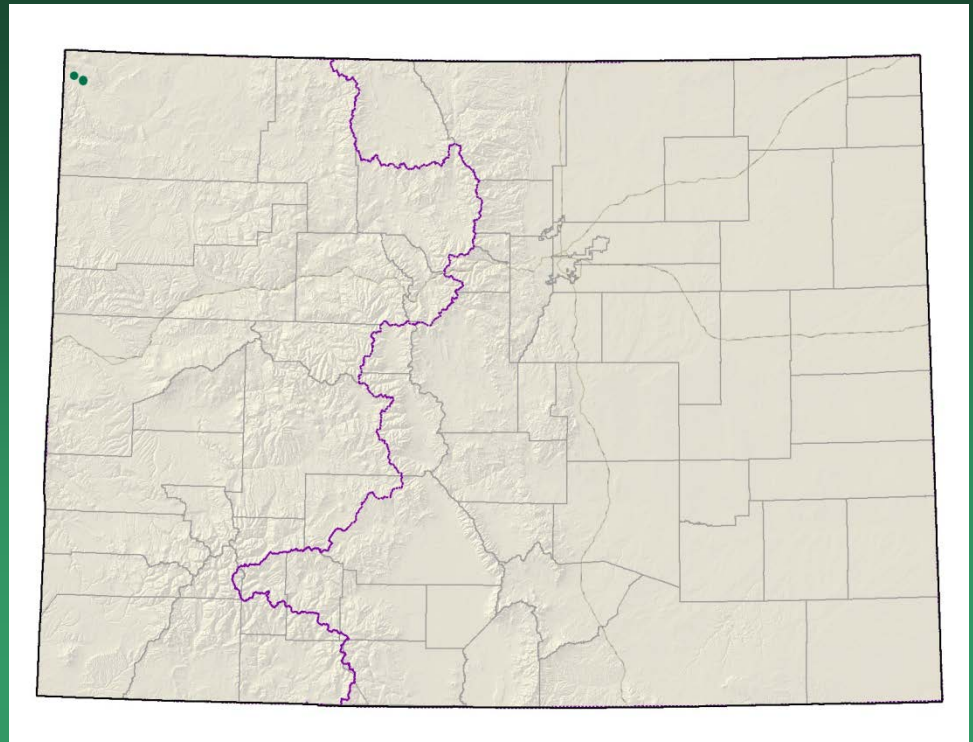
- Federal status: none
- Heritage ranks: G1/S1
- Global distribution: Colorado endemic (El Paso and Teller counties)
- Last observed: 2008
- Occurrences: 3 principal occurrences
- Individuals: 4,340 (tens of thousands estimated)
- Primary threats: road erosion and construction, structure maintenance, motorized and non-motorized recreation, herbivory, weeds
- Land ownership/management: Pike National Forest, private (Colorado Springs Utilities)



*Oreoxis humilis*



# *Penstemon gibbensii* Gibbens' beardtongue

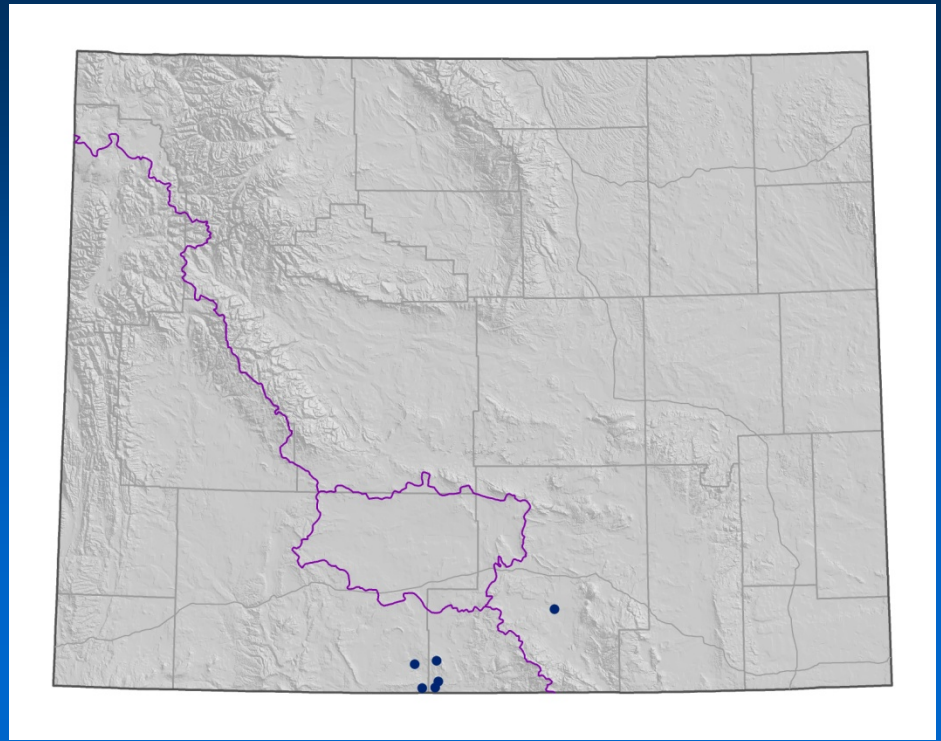


- Federal status: BLM sensitive
- Heritage ranks: G1G2/S1
- Global distribution: SC Wyoming, NE Utah, and NW Colorado
- Last observed in Colorado: 1999
- Occurrences: 7 total, 2 in CO
- Individuals: 17,000 individuals total, 6,300 in Colorado
- Primary threats in CO: noxious weeds, grazing, recreational activities, and uranium mining
- Land ownership in CO: BLM, National Wildlife Refuge



# *Penstemon gibbensii* Gibbens' beardtongue

- Federal status: BLM Sensitive
- Heritage ranks: G1G2/S1
- Last observed in Wyoming: 2009
- Wyoming occurrences: 6
- Primary threats: energy developments, exotic species
- Land ownership/management: BLM Rawlins FO, State, Private





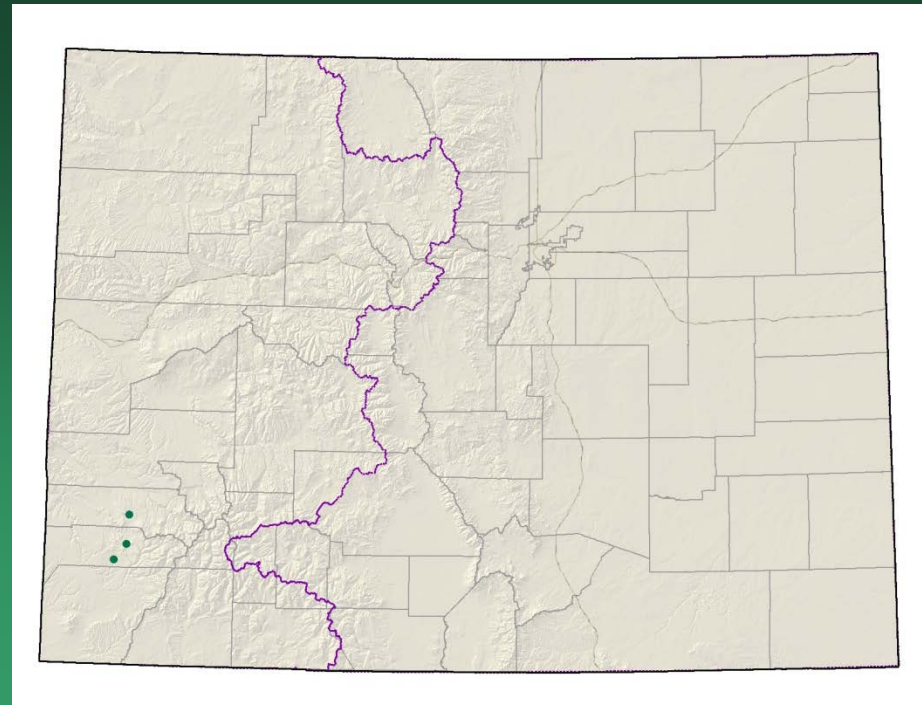
*Penstemon gibbensii*





# *Physaria pulvinata*

## Cushion bladderpod



- Federal status: USFS sensitive
- Heritage ranks: G1/S1
- Global distribution: Colorado endemic, San Miguel and Dolores counties
- Last observed: 2009
- Occurrences: 5
- Individuals: 7150+
- Primary threats: recreation, livestock trampling, weed control, habitat modification for sage grouse management, roads
- Land ownership/management: Colorado: Miramonte SWA and Lone Mesa State Park, San Juan NF; BLM, private



*Physaria pulvinata*

