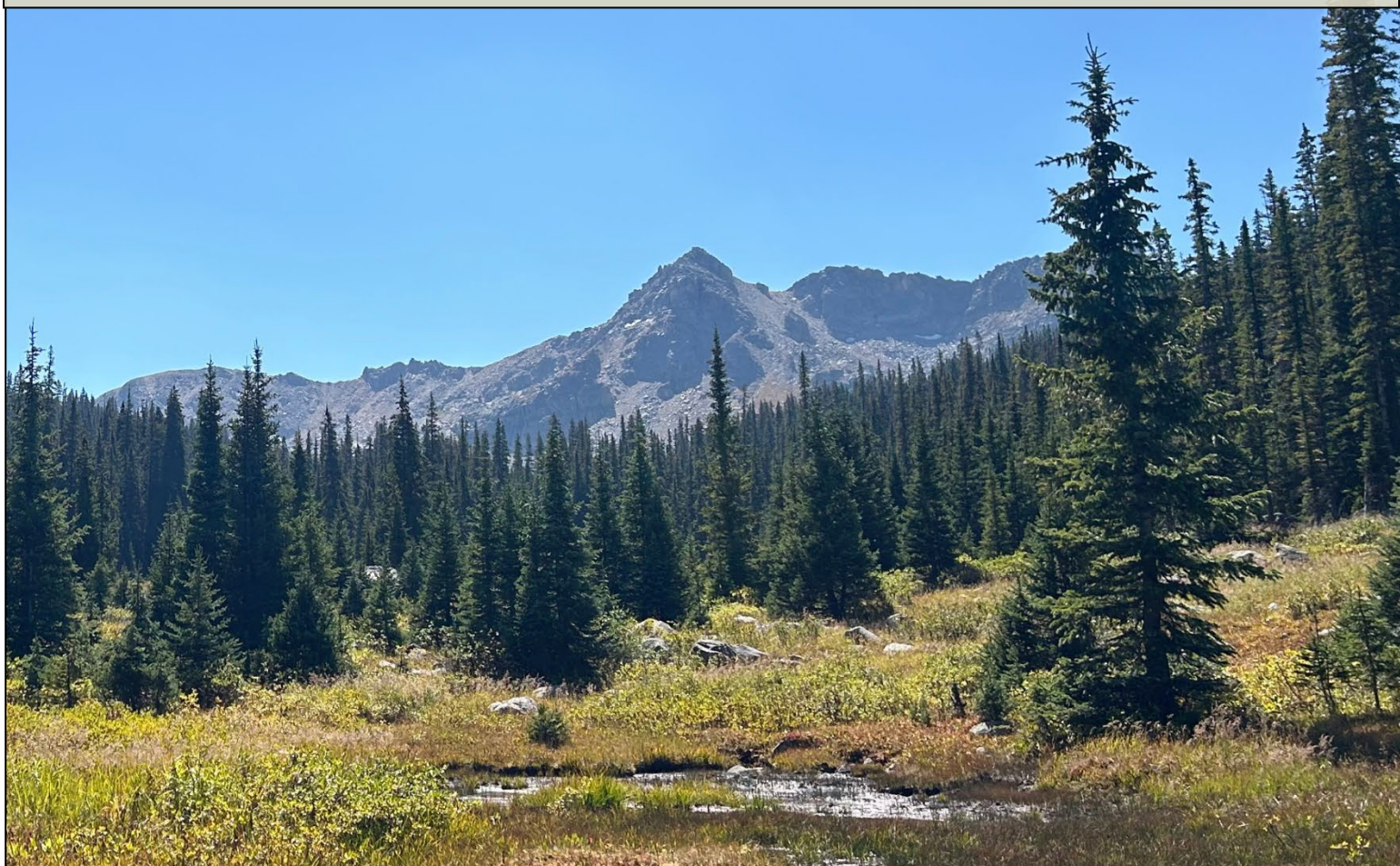


Inventory of Fens in White River National Forest

Appendix B: Confirmed Fens



July 2025

CNHP's mission is to preserve the natural diversity of life by contributing the essential scientific foundation that leads to lasting conservation of Colorado's biological wealth.

Colorado Natural Heritage Program

Warner College of Natural Resources
Colorado State University
1475 Campus Delivery
Fort Collins, CO 80523

Report Prepared for:

White River National Forest

900 Grand Avenue
Glenwood Springs, CO 81601

Recommended Citation:

Laughlin, L., Lemly, J., and G. Smith. 2025. Inventory of Fens in White River National Forest. Appendix B: Confirmed Fens. Colorado Natural Heritage Program, Colorado State University, Fort Collins, Colorado.

Front Cover Photo:

By Lauren Laughlin,
Photo title: Fen in Chapman Gulch

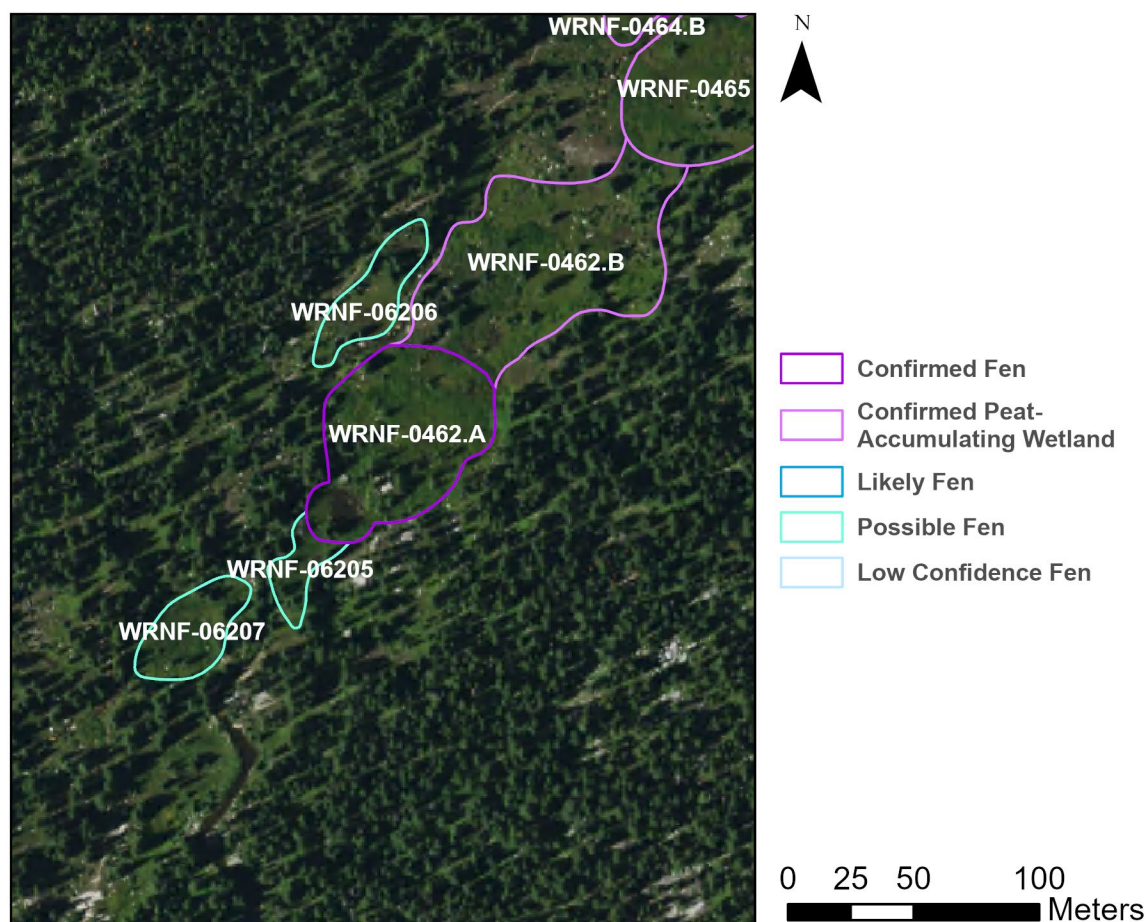


Table 1: Site characteristics of WRNF-0462.A

Latitude	39.29787258
Longitude	-106.5196318
Coordinate system	NAD83, UTM Zone 13
Elevation	3377 m (11,079 ft)
Survey Date	9/15/2024
Approximate peat depth	25 – 65 cm
Plant Association	CEGL001227: <i>Salix planifolia</i> / <i>Carex aquatilis</i> Wet Shrubland

Site description

Fen is mostly sedge dominated with patches of higher covers of *Eleocharis pauciflora*. *Salix planifolia* has a higher cover further north in the site. The site slopes from the north to the south, and ever so slightly to the west towards Lyle Creek. Some areas are not fen with higher cover of *Calamagrostis canadensis* and *Picea engelmannii*. There are some larger rocks in the site, which are visible from aerial imagery. Less peat is present in the north of the site, though there is some *Sphagnum*.

Access Directions

Park at Lyle Lake Trailhead and hike in 0.70 miles to site. Cross Lyle Creek, which is easy to do late in season as it is low flowing with many rocks to hop across. Some of the trail leading up to the site was very wet and muddy.

Survey Notes

Appears untouched by humans. No obvious herbivory.



Table 2: Species list for WRNF-0462.A

Scientific name	Cover Class
<i>Salix planifolia</i>	6:10-<25%
<i>Carex aquatilis</i>	5:5-<10%
<i>Eleocharis pauciflora</i>	5:5-<10%
<i>Carex illota</i>	5:5-<10%
<i>Carex scopulorum</i>	5:5-<10%
<i>Caltha leptosepala</i>	4:2-<5%
<i>Pedicularis groenlandica</i>	4:2-<5%
<i>Deschampsia cespitosa</i>	3:1-<2%
<i>Arnica mollis</i>	3:1-<2%
<i>Swertia perennis</i>	3:1-<2%
<i>Rhodiola rhodantha</i>	3:1-<2%
<i>Ranunculaceae</i>	3:1-<2%
<i>Calamagrostis canadensis</i>	3:1-<2%

Scientific name	Cover Class
<i>Senecio triangularis</i>	3:1-<2%
<i>Agrostis</i>	2:<1%
<i>Trisetum spicatum</i>	2:<1%
<i>Vaccinium cespitosum</i>	2:<1%
<i>Ligusticum porteri</i>	2:<1%
<i>Juncus drummondii</i>	2:<1%
<i>Picea engelmannii</i> var. <i>engelmannii</i>	2:<1%
<i>Juncus mertensianus</i>	2:<1%
<i>Muhlenbergia</i>	2:<1%
<i>Bistorta vivipara</i>	2:<1%

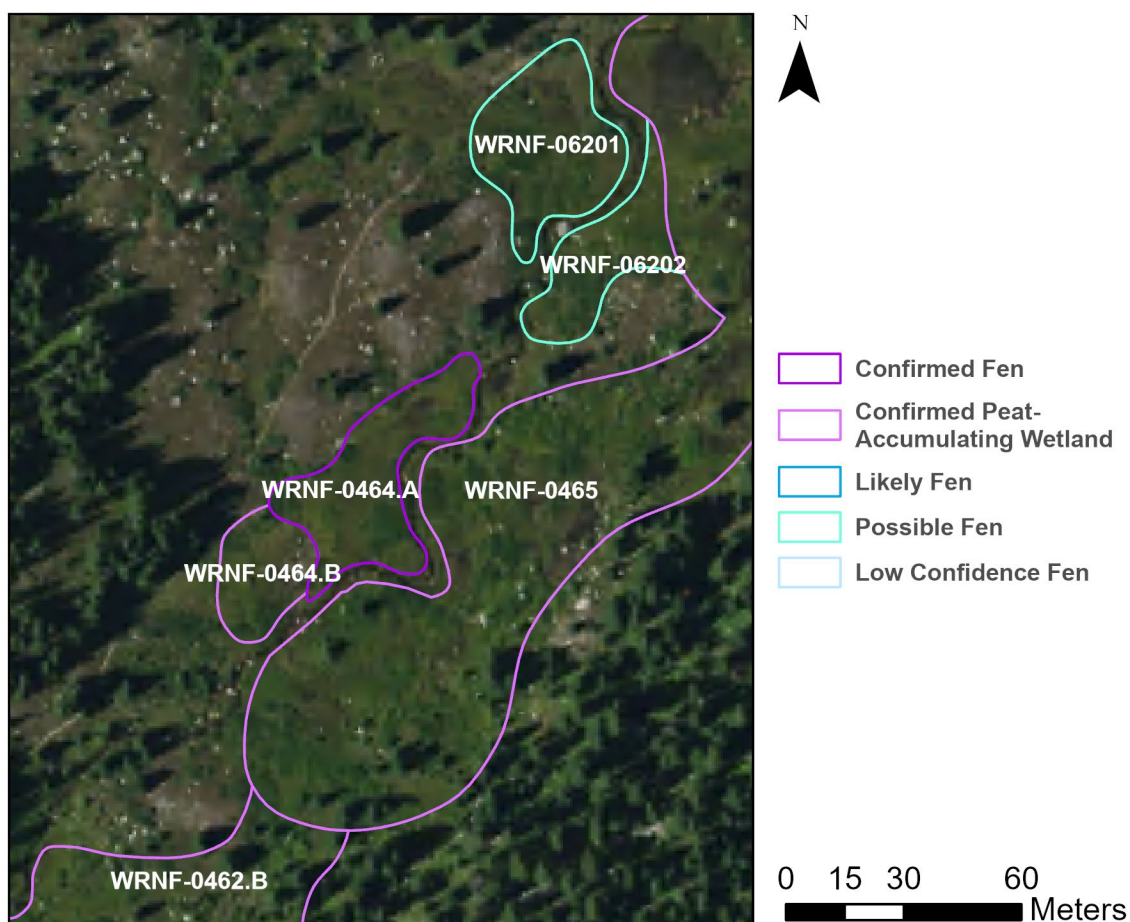


Table 3: Site characteristics of WRNF-0464.A

Latitude	39.29980542
Longitude	-106.5180648
Coordinate system	NAD83, UTM Zone 13
Elevation	3394 m (11,135 ft)
Survey Date	9/15/2024
Approximate peat depth	10 – 50 cm
Plant Association	CEGL002665: <i>Salix planifolia</i> / <i>Caltha leptosepala</i> Wet Shrubland

Site description

Willow and graminoid dominated. The south side of the polygon is not a fen due to rock presence. Sphagnum present. The wetland is bordered heavily by *Salix*. Lyle Creek is to the East of the polygon; the wetland slightly slopes to the creek.

Access Directions

From the Lyle Lake Trailhead, hike in about 1 km on the trail. From the trail, cut east 20 m to the polygon.

Survey Notes

Ungulate trails and tracks in polygon. Hiking trail 30m from plot and sees use. Human disturbance may be possible but is not obvious in site.



Table 4: Species list for WRNF-0464.A

Scientific name	Cover Class
<i>Salix planifolia</i>	6:10-<25%
<i>Deschampsia cespitosa</i>	5:5-<10%
<i>Caltha leptosepala</i>	5:5-<10%
<i>Ligusticum porteri</i>	4:2-<5%
<i>Carex aquatilis</i>	4:2-<5%
<i>Arnica mollis</i>	3:1-<2%
<i>Carex scopulorum</i>	3:1-<2%
<i>Danthonia intermedia</i>	3:1-<2%
<i>Carex illota</i>	3:1-<2%
<i>Pedicularis groenlandica</i>	3:1-<2%
<i>Rhodiola rhodantha</i>	2:<1%
<i>Epilobium ciliatum</i>	2:<1%
<i>Rosaceae</i>	2:<1%
<i>Viola</i>	2:<1%

Scientific name	Cover Class
<i>Trisetum spicatum</i>	2:<1%

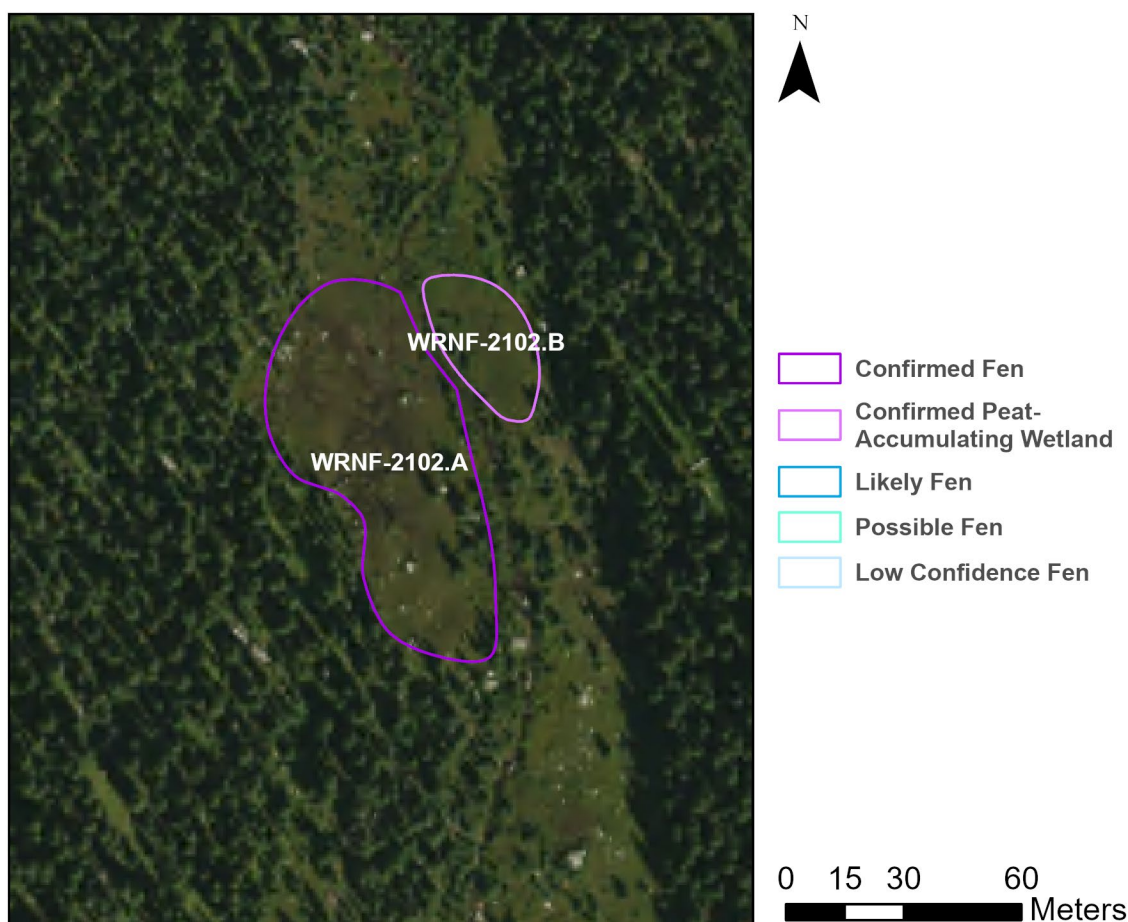


Table 5: Site characteristics of WRNF-2102.A

Latitude	39.23125753
Longitude	-106.6214099
Coordinate system	NAD83, UTM Zone 13
Elevation	3331 m (10,928 ft)
Survey Date	9/14/2024
Approximate peat depth	25 – 45 cm
Plant Community	Alliance A3435. <i>Carex limosa</i> - <i>Carex buxbaumii</i> - <i>Triglochin maritima</i> Alkaline Graminoid Fen Alliance

Site Description

Site dominated by *Carex magellanica*, with other fen forbs and some *Picea engelmannii* var. *engelmannii* mixed in as well.

Access Directions

From the Chapman Gulch Trailhead, hike approximately 3.85 km, then cut off the trail to the east to the polygon, approximately 30 m. Lots of downed trees from an avalanche around (39.23554, -106.62234), so the trail is hard/impossible to find and requires bushwhacking.

Survey Notes

Site appears in pristine condition.



Table 6: Species list for WRNF-2102.A

Scientific name	Cover Class
<i>Carex magellanica</i> ssp. <i>irrigua</i>	7:25-<50%
<i>Eleocharis pauciflora</i>	6:10-<25%
<i>Caltha leptosepala</i>	5:5-<10%
<i>Carex scopulorum</i>	5:5-<10%
<i>Calamagrostis canadensis</i>	5:5-<10%
<i>Danthonia intermedia</i>	4:2-<5%
<i>Deschampsia cespitosa</i>	4:2-<5%
<i>Picea engelmannii</i> var. <i>engelmannii</i>	3:1-<2%
<i>Eriophorum angustifolium</i>	3:1-<2%
<i>Muhlenbergia filiformis</i>	3:1-<2%
<i>Viola</i>	2:<1%

Scientific name	Cover Class
<i>Ligusticum porteri</i>	2:<1%
<i>Arnica mollis</i>	2:<1%
<i>Swertia perennis</i>	2:<1%
<i>Pedicularis groenlandica</i>	2:<1%
<i>Kalmia microphylla</i>	2:<1%
<i>Rhodiola rhodantha</i>	2:<1%
<i>Aconitum columbianum</i>	2:<1%
<i>Symphyotrichum</i>	2:<1%
<i>Epilobium ciliatum</i>	2:<1%
<i>Trisetum spicatum</i>	2:<1%
<i>Carex nigricans</i>	2:<1%

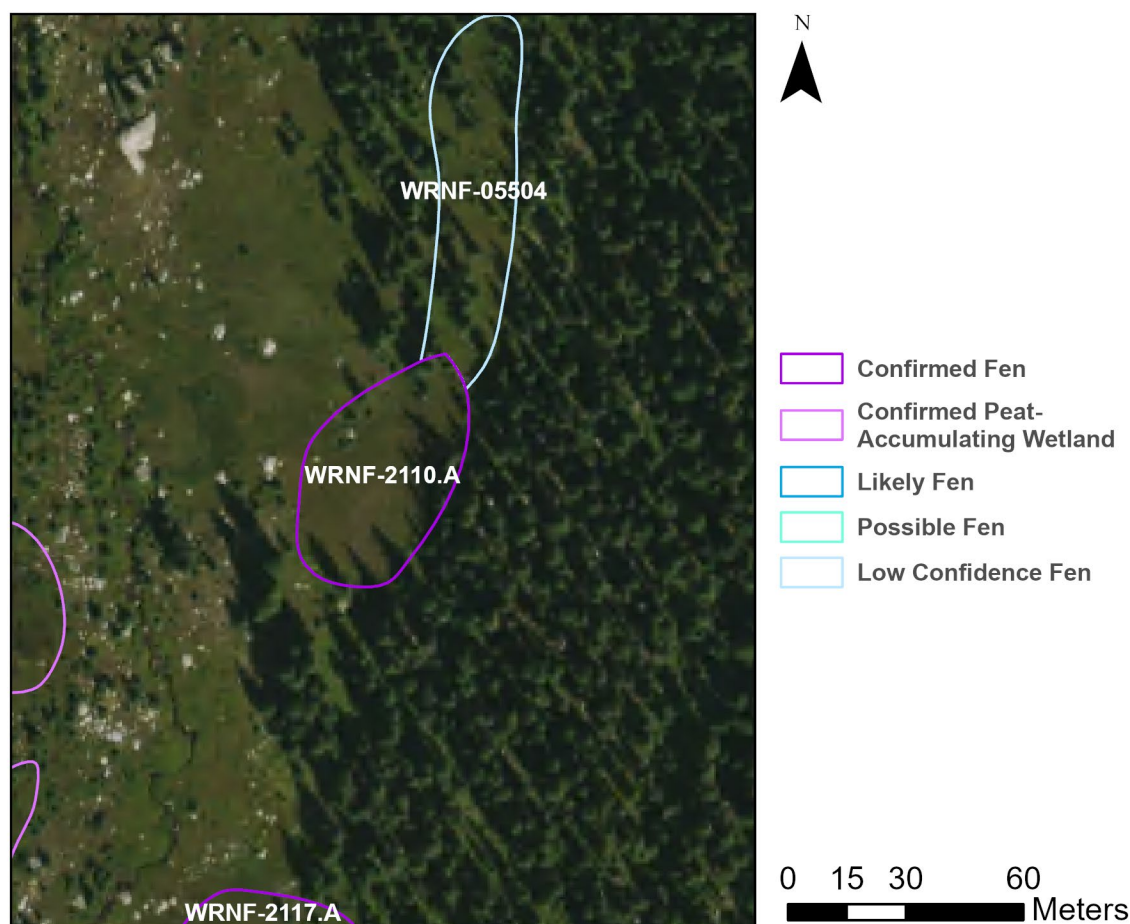


Table 7: Site characteristics of WRNF-2110.A

Latitude	39.22864961
Longitude	-106.6203475
Coordinate system	NAD83, UTM Zone 13
Elevation	3358 m (11,017ft)
Survey Date	9/14/2024
Approximate peat depth	55 cm
Plant Association	CEGL001802: <i>Carex aquatilis</i> Wet Meadow

Site description

A rapid species list was collected here and should not be considered comprehensive. Site is *Carex* dominated with common fen forbs. Sloping to the north and west. Fen is dry at the time of sampling because it's late in the season.

Access Directions

Park at Chapman Gulch Trailhead and hike in for approximately 4.2km to site, following Chapman Gulch Trail. About 2 miles into the hike is an avalanche zone with many downed trees, which requires bushwhacking. Creek crossing required, but there are many good places to cross.

Survey Notes

Tracks in site but no obvious herbivory on woodies. Site appears untouched by humans.



Table 8: Species list for WRNF-2110.A

Scientific name	Cover Class
<i>Carex aquatilis</i>	7:25-<50%
<i>Eleocharis pauciflora</i>	6:10-<25%
<i>Caltha leptosepala</i>	5:5-<10%
<i>Deschampsia cespitosa</i>	5:5-<10%
<i>Rhodiola rhodantha</i>	3:1-<2%
<i>Swertia perennis</i>	3:1-<2%
<i>Ligusticum porteri</i>	3:1-<2%
<i>Salix planifolia</i>	3:1-<2%
<i>Carex scopulorum</i>	3:1-<2%
<i>Carex nigricans</i>	2:<1%
<i>Pedicularis groenlandica</i>	2:<1%
<i>Carex illota</i>	2:<1%

WRNF-2117.A & WRNF-2117.B

Chapman Gulch

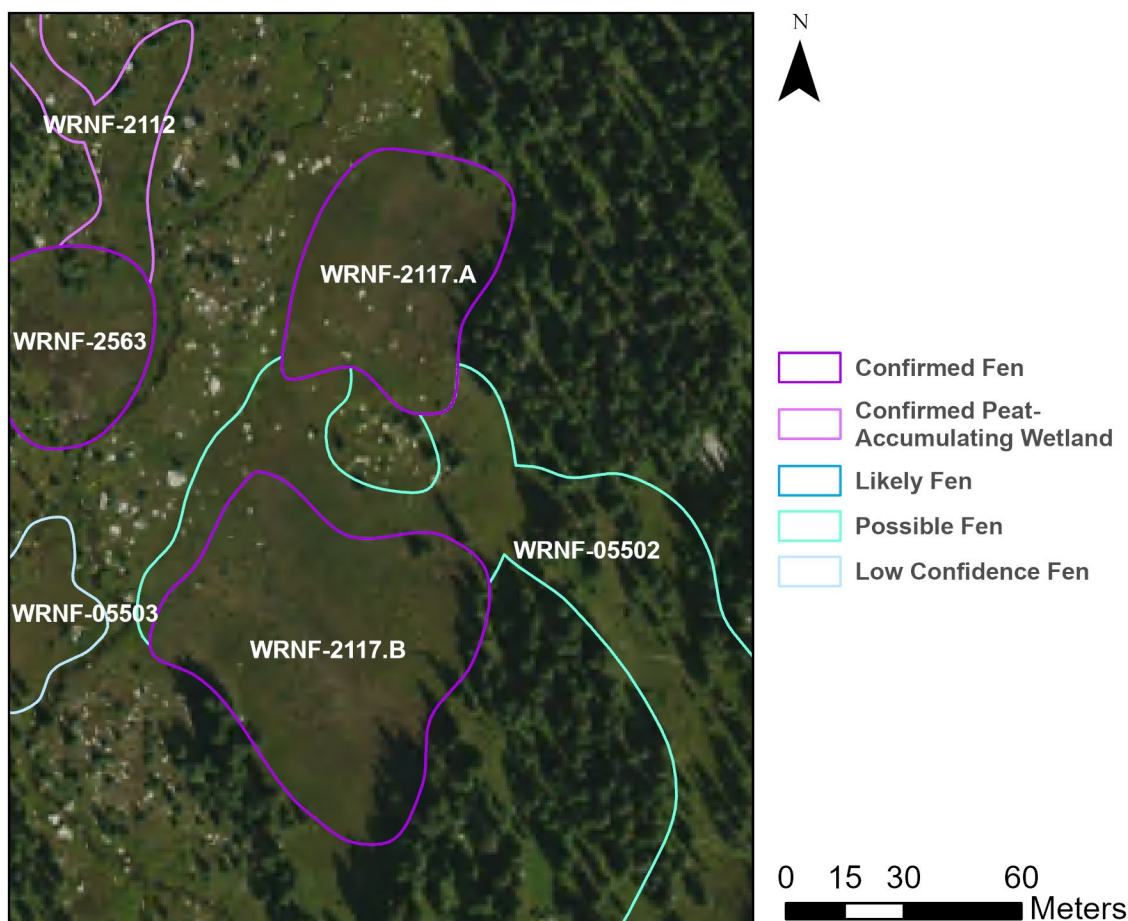


Table 9: Site characteristics of WRNF-2117

Latitude	39.22864961
Longitude	-106.6203475
Coordinate system	NAD83, UTM Zone 13
Elevation	3358 m (11,017ft)
Survey Date	9/14/2024
Approximate peat depth	40 – 60 cm
Plant Association	CEGL001836: <i>Eleocharis quinqueflora</i> Fen

Site description

The south end is *Salix* dominated, the middle is *Carex* dominated, and the north end is forb dominated. The wetland has a very wet middle section and is dryer above and below. Fen slopes to the north.

Access Directions

From Chapman Gulch Trailhead, hike in ~4.4km to site. About 2 miles in is an avalanche zone which requires lots of bushwhacking and climbing over/around downed trees. Site access requires a creek crossing, which is easy to do with abundant places to safely cross.

Survey Notes

Some evidence of ungulate hooves. No obvious herbivory or human presence.



Table 10: Species list for WRNF-2117

Scientific name	Cover Class
<i>Eleocharis pauciflora</i>	6:10-<25%
<i>Carex utriculata</i>	5:5-<10%
<i>Carex scopulorum</i>	5:5-<10%
<i>Salix planifolia</i>	4:2-<5%
<i>Caltha leptosepala</i>	4:2-<5%
<i>Pedicularis groenlandica</i>	3:1-<2%
<i>Deschampsia cespitosa</i>	3:1-<2%
<i>Rhodiola rhodantha</i>	3:1-<2%
<i>Carex illota</i>	3:1-<2%
<i>Carex nova</i>	3:1-<2%
<i>Phleum alpinum</i>	3:1-<2%
<i>Trisetum spicatum</i>	3:1-<2%
<i>Calamagrostis canadensis</i>	3:1-<2%

Scientific name	Cover Class
<i>Senecio triangularis</i>	3:1-<2%
<i>Bistorta vivipara</i>	2:<1%
<i>Swertia perennis</i>	2:<1%
<i>Juncus drummondii</i>	2:<1%
<i>Ligusticum porteri</i>	2:<1%
<i>Arnica mollis</i>	2:<1%
<i>Eriophorum angustifolium</i>	2:<1%

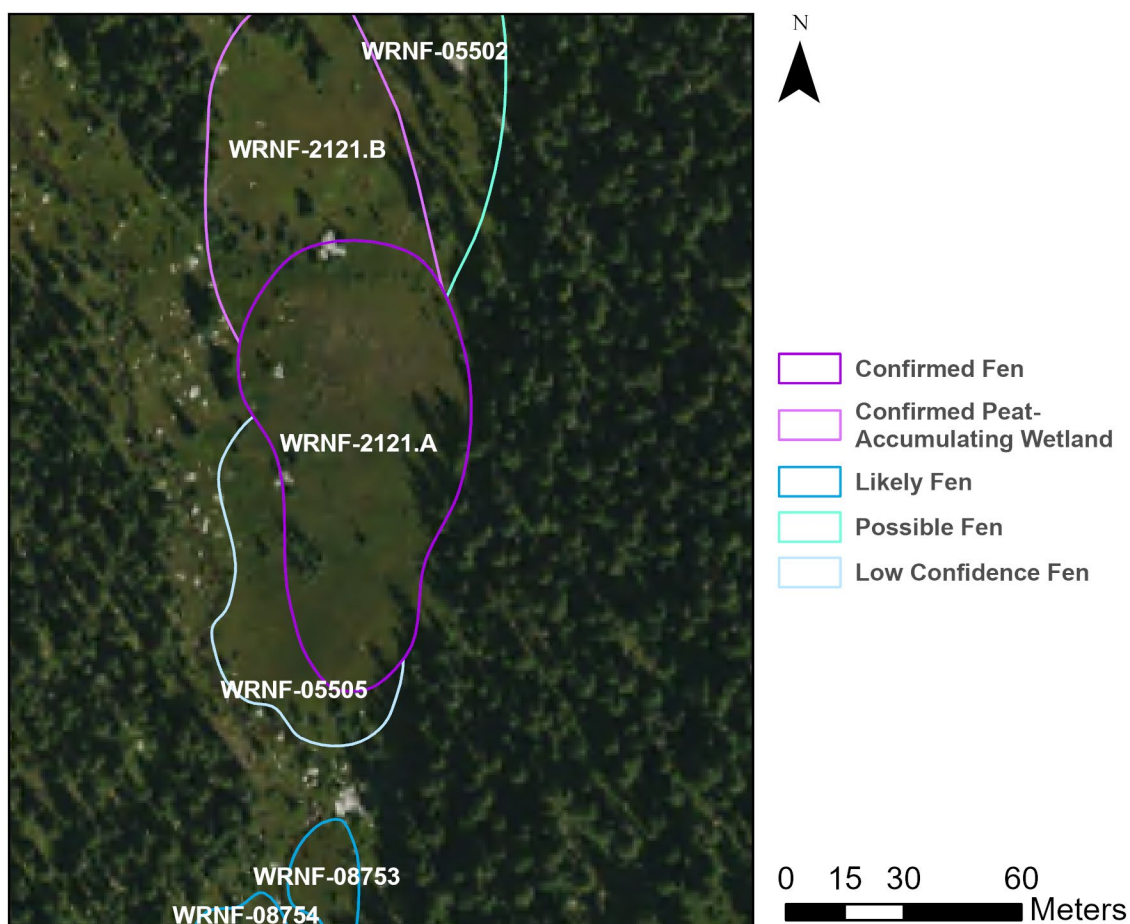


Table 11: Site characteristics of WRNF-2121.A

Latitude	39.22499675
Longitude	-106.6198761
Coordinate system	NAD83, UTM Zone 13
Elevation	3391 m (11,125 ft)
Survey Date	9/14/2024
Approximate peat depth	10 – 55 cm
Plant Association	CEGL001823: <i>Carex scopulorum</i> - <i>Caltha leptosepala</i> Wet Meadow

Site description

Caltha leptosepala and *Carex scopulorum* species dominate the fen. Sloped landscape from the South down towards the North. No surface water is present. Soils were not saturated at the time of sampling.

Access Directions

From the Chapman Gulch Trailhead, hike in 4.5 km on the trail. At around (39.23554, -106.62234), there are many downed trees from an avalanche, and the trail is hard/impossible to find and requires a lot of bushwhacking. From there hike 150 m east into the polygon.

Survey Notes

Evidence of ungulate activity such as scat and tracks. No obvious herbivory.



Table 12: Species list for WRNF-2121

Scientific name	Cover Class
<i>Caltha leptosepala</i>	6:10-<25%
<i>Carex scopulorum</i>	5:5-<10%
<i>Senecio triangularis</i>	4:2-<5%
<i>Salix planifolia</i>	4:2-<5%
<i>Carex utriculata</i>	4:2-<5%
<i>Picea engelmannii</i> var. <i>engelmannii</i>	4:2-<5%
<i>Carex nova</i>	3:1-<2%
<i>Swertia perennis</i>	3:1-<2%
<i>Rhodiola rhodantha</i>	3:1-<2%
<i>Carex microptera</i>	3:1-<2%
<i>Calamagrostis canadensis</i>	3:1-<2%
<i>Deschampsia cespitosa</i>	3:1-<2%

Scientific name	Cover Class
<i>Carex illota</i>	3:1-<2%
<i>Pedicularis groenlandica</i>	3:1-<2%
<i>Agrostis</i>	3:1-<2%
<i>Mertensia</i>	3:1-<2%
<i>Ligusticum porteri</i>	2:<1%
<i>Bistorta vivipara</i>	2:<1%
<i>Arnica mollis</i>	2:<1%
<i>Epilobium</i>	2:<1%
<i>Juncus drummondii</i>	2:<1%

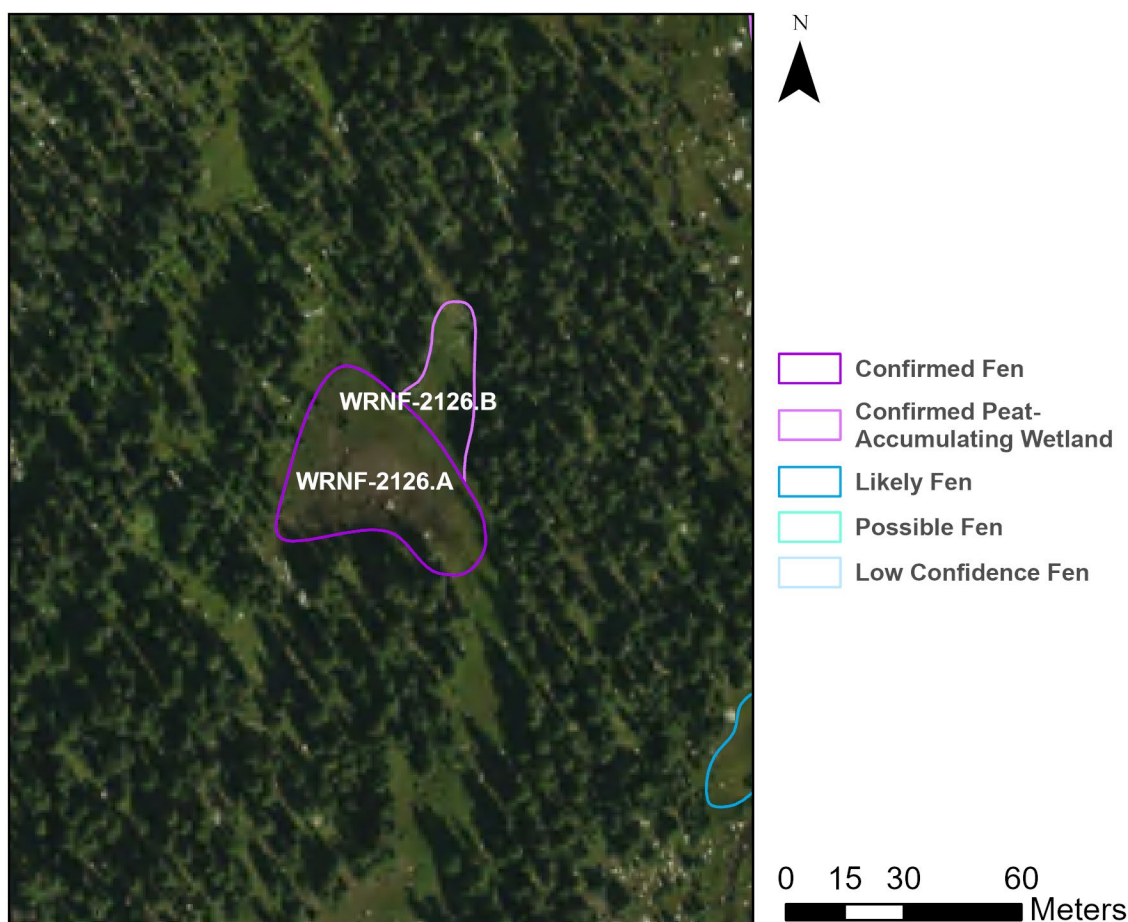


Table 13: Site characteristics of WRNF-2126.A

Latitude	39.22425557
Longitude	-106.6213292
Coordinate system	NAD83, UTM Zone 13
Elevation	3401 m (11,158 ft)
Survey Date	9/14/2024
Approximate peat depth	15 – 50 cm
Plant Association	CEGL001836: <i>Eleocharis quinqueflora</i> Fen

Site Description

The most dominant species is *Eleocharis pauciflora*, followed by *Carex scopulorum* and an unknown grass. The south end of the polygon is fen. A trail runs through/adjacent to the site, but the trail appears to be rarely used.

Access Directions

From the Chapman Gulch Trailhead, hike down the trail for about 4.6 km. On that hike, at around (39.23554, -106.62234), there are a lot of downed trees from an avalanche, making the trail hard/impossible to find, and requiring a lot of bushwhacking.

Survey Notes

The site in pristine condition despite being so close to the trail. Some ungulate tracks within the site, but no obvious browse or scat.



Table 14: Species list for WRNF-2126.A

Scientific name	Cover Class
<i>Eleocharis pauciflora</i>	6:10-<25%
<i>Carex scopulorum</i>	4:2-<5%
<i>Poaceae</i>	4:2-<5%
<i>Deschampsia cespitosa</i>	3:1-<2%
<i>Calamagrostis canadensis</i>	3:1-<2%
<i>Pedicularis groenlandica</i>	3:1-<2%
<i>Rhodiola rhodantha</i>	3:1-<2%
<i>Asteraceae</i>	3:1-<2%
<i>Salix planifolia</i>	3:1-<2%
<i>Picea engelmannii</i> var. <i>engelmannii</i>	3:1-<2%
<i>Vaccinium cespitosum</i>	2:<1%

Scientific name	Cover Class
<i>Arnica mollis</i>	2:<1%
<i>Carex illota</i>	2:<1%
<i>Viola</i>	2:<1%
<i>Epilobium</i>	2:<1%
<i>Swertia perennis</i>	2:<1%
<i>Bistorta vivipara</i>	2:<1%
<i>Gaultheria humifusa</i>	2:<1%
<i>Carex nigricans</i>	2:<1%
<i>Juncus drummondii</i>	2:<1%

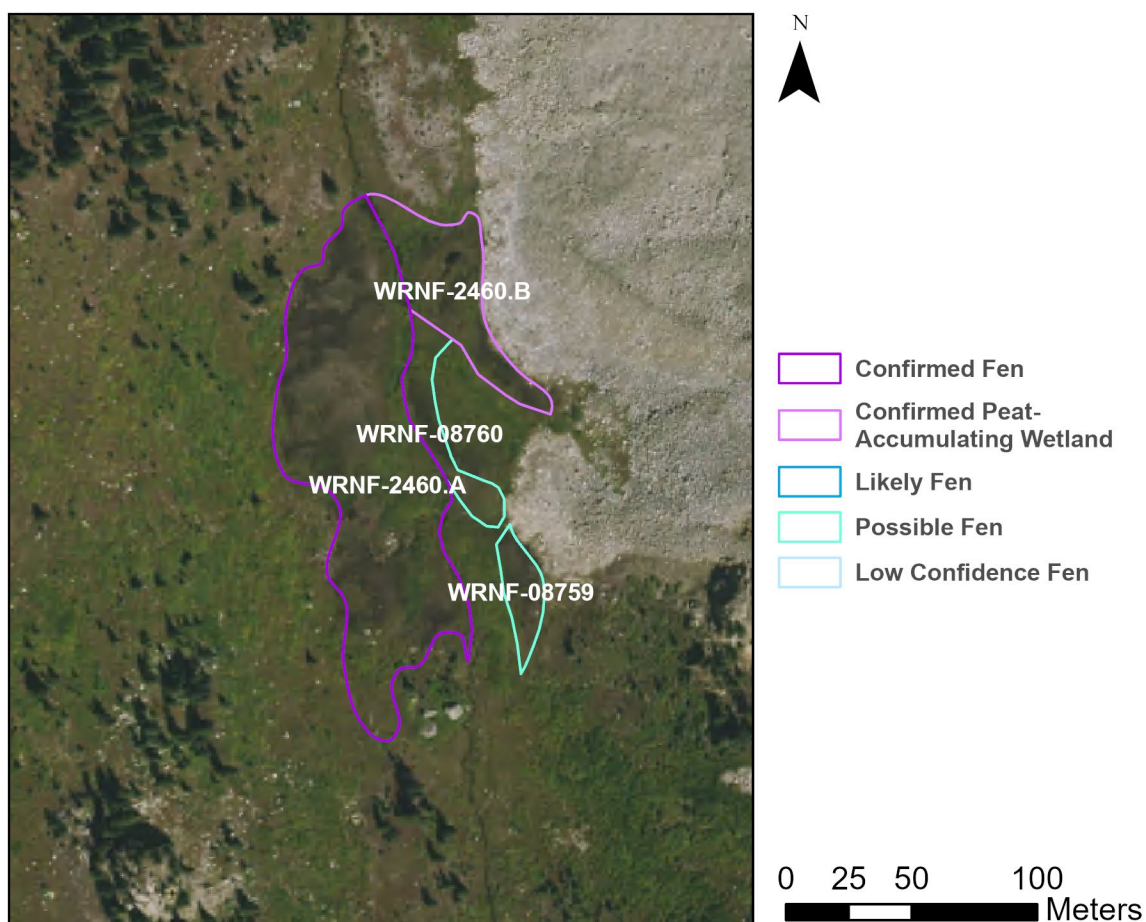


Table 15: Site characteristics of WRNF-2460.A

Latitude	39.1562936
Longitude	-106.6553392
Coordinate system	NAD83, UTM Zone 13
Elevation	3523 m (11,558 ft)
Survey Date	9/12/2024
Approximate peat depth	30 – 50 cm
Plant Association	CEGL001836: <i>Eleocharis quinqueflora</i> Fen

Site Description

Juncus and *Carex* dominated. *Salix* and other common fen species are present as well. The eastern side of the plot contains a large rock face 10m from the plot. Midway creek flows through site.

Access Directions

From the western trailhead for Lost Man Trail, hike up the switchbacks, connect to Midway Trail and hike a total of 6.85 km. From there, hike about 100 m east into the site. Expect lots of elevation gain. There is not much cover in this area, so prepare to assess the sky in the chance of storms in the afternoon.

Survey Notes

The site is in pristine condition with minimal herbivory.



Table 16: Species list for WRNF-2460.A

Scientific name	Cover Class
<i>Eleocharis pauciflora</i>	8:50-<75%
<i>Carex aquatilis</i>	7:25-<50%
<i>Salix planifolia</i>	6:10-<25%
<i>Deschampsia cespitosa</i>	4:2-<5%
<i>Caltha leptosepala</i>	3:1-<2%
<i>Carex scopulorum</i>	3:1-<2%
<i>Ligusticum porteri</i>	3:1-<2%
<i>Pedicularis groenlandica</i>	2:<1%
<i>Rhodiola rhodantha</i>	2:<1%
<i>Bistorta vivipara</i>	2:<1%
<i>Luzula parviflora</i>	2:<1%
<i>Swertia perennis</i>	2:<1%

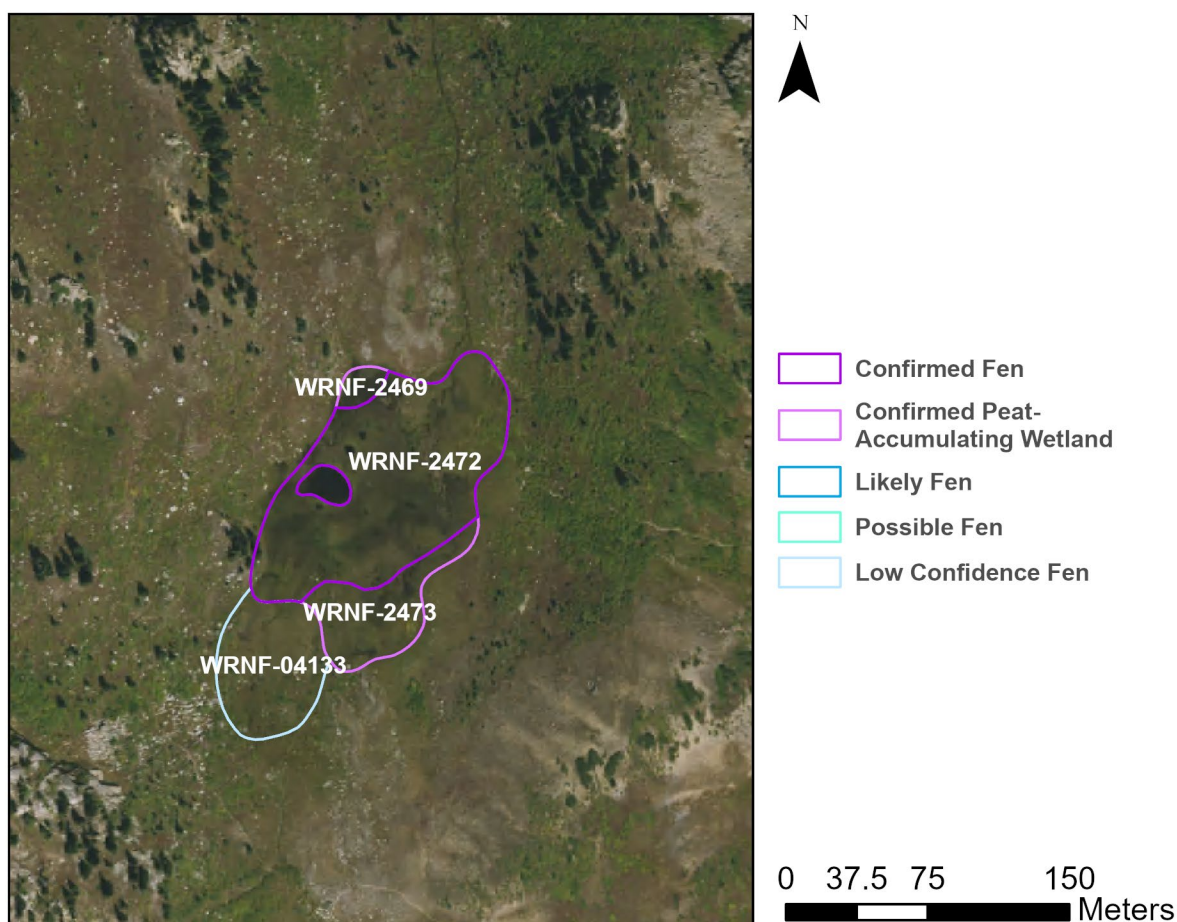


Table 17: Site characteristics of WRNF-2472

Latitude	39.15248975
Longitude	-106.6548291
Coordinate system	NAD83, UTM Zone 13
Elevation	3584 m (11,758 ft)
Survey Date	9/12/2024
Approximate peat depth	50 – 100 cm
Plant Association	CEGL001836: <i>Eleocharis quinqueflora</i> Fen

Site Description

Eleocharis pauciflora and *Carex aquatilis* dominate this fen. Other common fen species are present as well. Notably, some *Carex diandra* is present as well. This fen is a very flat wetland with no slope. Willows occur on the margins.

Access Directions

From the western parking lot of the Lost Man Trail Loop, hike up the switchbacks of Lost Man Trail to Midway Trail for a total of about 6.4 km. Then hike in east about 10 m to the polygon. Prepare for a lot of elevation gain, but otherwise the trail is well maintained and easy to follow. Trees are sparse up Midway Pass, so come prepared to routinely check the sky for changing weather.

Survey Notes

The site has some ungulate use and wallowing but appears largely untouched.



Table 18: Species list for WRNF-2472

Scientific name	Cover Class
<i>Carex aquatilis</i>	7:25-<50%
<i>Eleocharis pauciflora</i>	7:25-<50%
<i>Salix planifolia</i>	5:5-<10%
<i>Caltha leptosepala</i>	4:2-<5%
<i>Pedicularis groenlandica</i>	3:1-<2%
<i>Carex canescens</i> ssp. <i>canescens</i>	3:1-<2%
<i>Deschampsia cespitosa</i>	3:1-<2%
<i>Rhodiola rhodantha</i>	2:<1%

Scientific name	Cover Class
<i>Lemna minor</i>	2:<1%
<i>Ligusticum porteri</i>	2:<1%
<i>Luzula parviflora</i>	2:<1%
<i>Carex diandra</i>	2:<1%
<i>Juncus mertensianus</i>	2:<1%
<i>Bistorta bistortoides</i>	2:<1%
<i>Juncus drummondii</i>	2:<1%

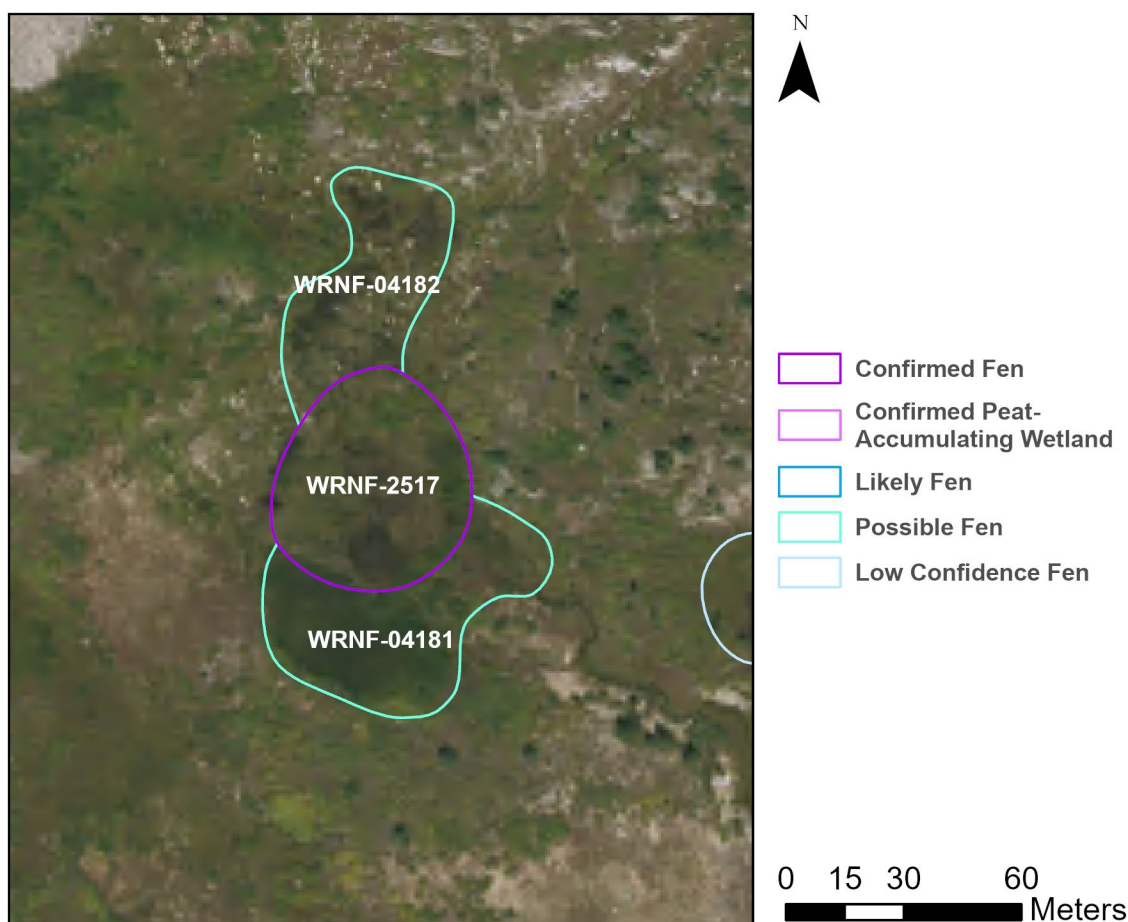


Table 19: Site characteristics of WRNF-2517

Latitude	39.14139861
Longitude	-106.6402068
Coordinate system	NAD83, UTM Zone 13
Elevation	3684 m (12,086 ft)
Survey Date	9/12/2024
Approximate peat depth	80 cm
Plant Association	CEGL001836: <i>Eleocharis quinqueflora</i> Fen

Site Description

Vegetation is mostly *Eleocharis* and *Salix* with a decent cover of sedges as well. The fen is a slightly sloping fen.

Access Directions

From the western parking lot for the Lost Man Trail, hike up the switchbacks and take Midway Trail for approximately 4 km. From there, hike about 400 m off trail to the polygon. Expect lots of elevation gain.

Survey Notes

Site appears untouched.



Table 20: Species list for WRNF-2517

Scientific name	Cover Class
<i>Eleocharis pauciflora</i>	7:25-<50%
<i>Salix planifolia</i>	7:25-<50%
<i>Carex scopulorum</i>	5:5-<10%
<i>Caltha leptosepala</i>	5:5-<10%
<i>Rhodiola rhodantha</i>	5:5-<10%
<i>Ligusticum porteri</i>	4:2-<5%
<i>Pedicularis groenlandica</i>	4:2-<5%
<i>Calamagrostis canadensis</i>	4:2-<5%
<i>Poaceae</i>	3:1-<2%
<i>Swertia perennis</i>	2:<1%
<i>Carex nova</i>	2:<1%
<i>Viola</i>	2:<1%

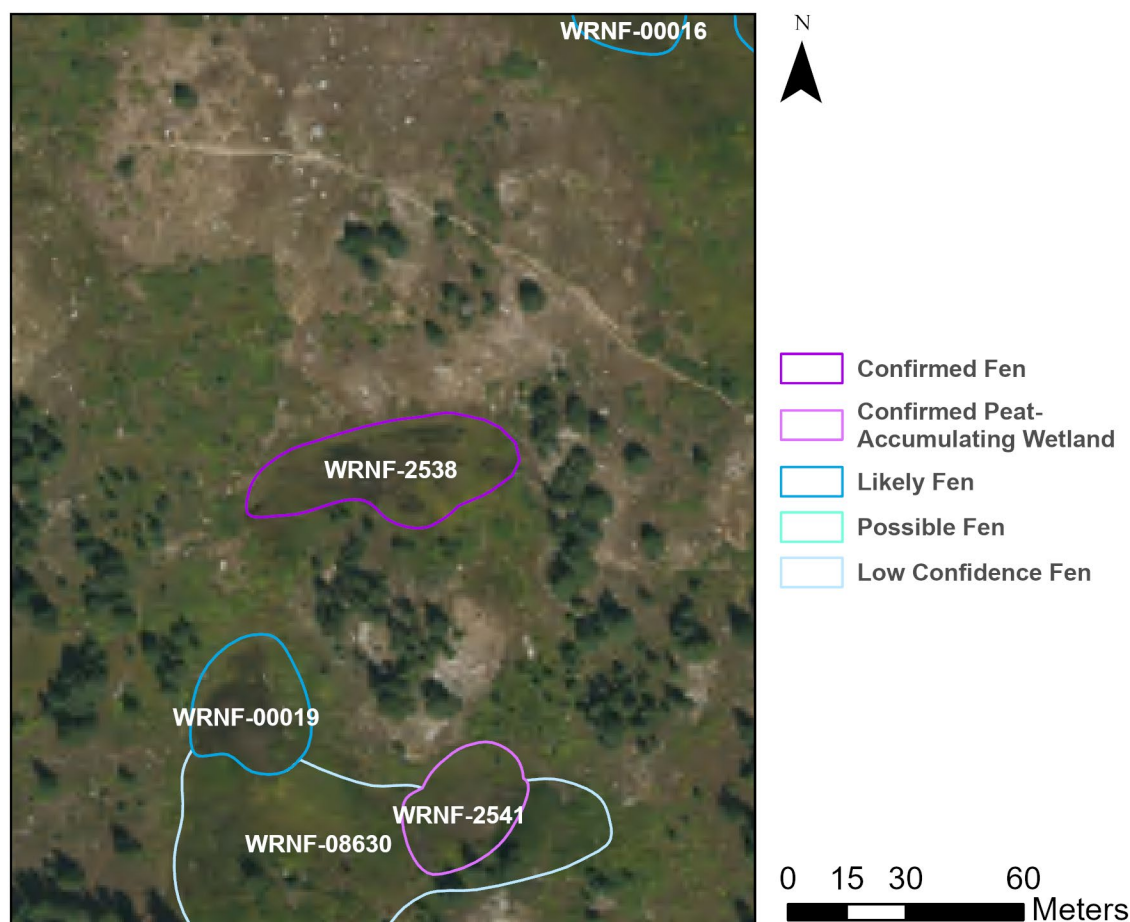


Table 21: Site characteristics of WRNF-2538

Latitude	39.13695897
Longitude	-106.6394475
Coordinate system	NAD83, UTM Zone 13
Elevation	3627 m (11,900 ft)
Survey Date	9/12/2024
Approximate peat depth	60 cm
Plant Association	CEGL001836: <i>Eleocharis quinqueflora</i> Fen

Site Description

The site is largely dominated by *Eleocharis quinqueflora* (*pauciflora*) with some sedges and forbs. The wetland is a gently sloping wetland.

Access Directions

From the western parking lot for Lost Man Loop, hike up the switchbacks and to Midway Trail for a total of about 3.8 km. Hike in directly southwest of the trail about 10 m to polygon prepare for a lot of elevation gain.

Survey Notes

Site appears untouched by humans, despite being right next to a trail.



Table 22: Species list for WRNF-2538

Scientific name	Cover Class
<i>Eleocharis quinqueflora</i>	7:25-<50%
<i>Salix planifolia</i>	6:10-<25%
<i>Carex scopulorum</i>	4:2-<5%
<i>Deschampsia cespitosa</i>	4:2-<5%
<i>Calamagrostis canadensis</i>	4:2-<5%
<i>Rhodiola rhodantha</i>	3:1-<2%
<i>Caltha leptosepala</i>	3:1-<2%
<i>Ligusticum porteri</i>	3:1-<2%
<i>Poaceae</i>	3:1-<2%
<i>Pedicularis groenlandica</i>	2:<1%
<i>Potentilla</i>	2:<1%
<i>Symphyotrichum</i>	2:<1%
<i>Trisetum spicatum</i>	2:<1%

Scientific name	Cover Class
<i>Carex illota</i>	2:<1%
<i>Bistorta vivipara</i>	2:<1%
<i>Juncus drummondii</i>	2:<1%
<i>Carex gynocrates</i>	2:<1%

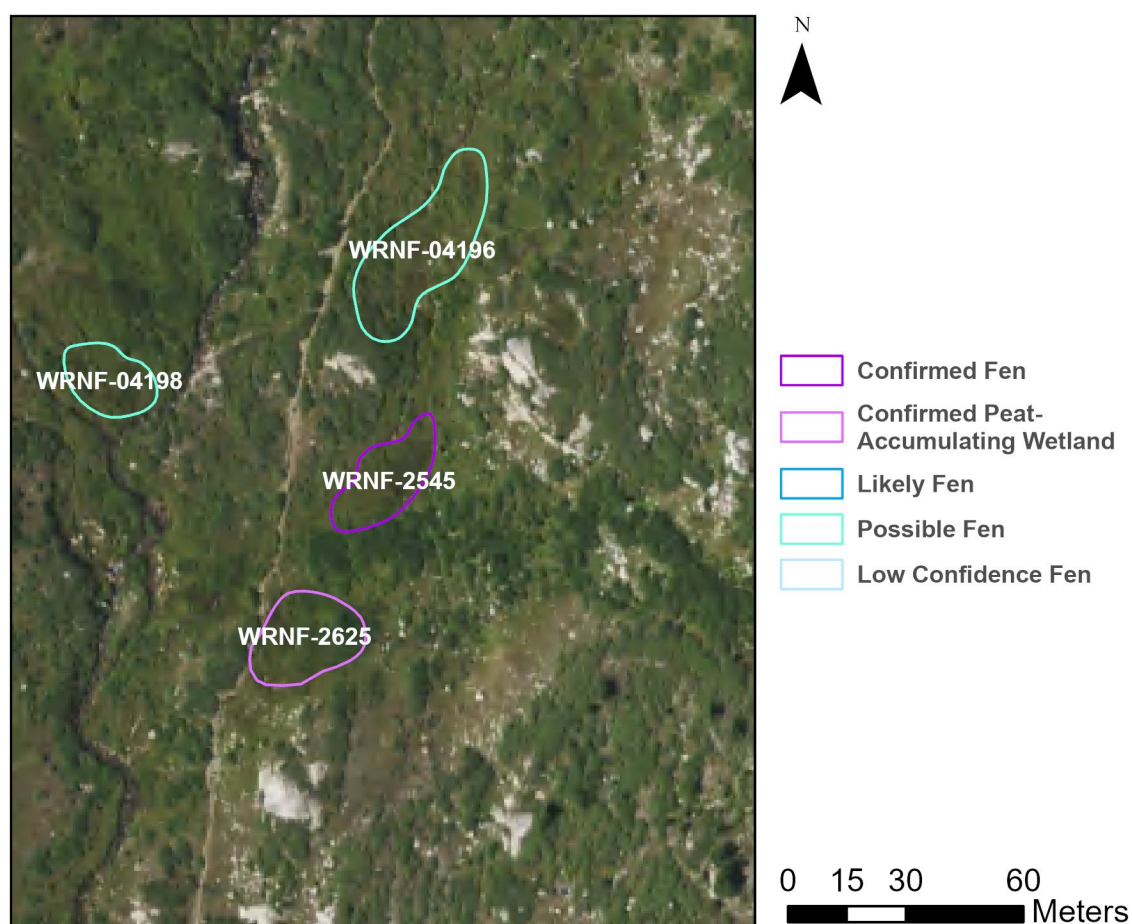


Table 23: Site characteristics of WRNF-2545

Latitude	39.13464972
Longitude	-106.5794525
Coordinate system	NAD83, UTM Zone 13
Elevation	3645 m (11,959 ft)
Survey Date	9/10/2024
Approximate peat depth	50
Plant Association	CEGL001823: <i>Carex scopulorum</i> - <i>Caltha leptosepala</i> Wet Meadow

Site Description

Vegetation is mostly sedges. Notably, *Carex diandra* is present in low cover. The site is adjacent to a trail and slopes to the west, towards the Roaring Fork. Some small channels flow through the site to the west.

Access Directions

From the eastern trailhead for Lost Man Loop, hike Lost Man Trail about 1.26 km then cut east off trail for a few meters to the polygon

Survey Notes

Despite being right next to a very busy trail, the fen appears to have little human impact. No obvious ungulate use.



Table 24: Species list for WRNF-2545

Scientific name	Cover Class
<i>Carex scopulorum</i>	7:25-<50%
<i>Caltha leptosepala</i>	6:10-<25%
<i>Rhodiola rhodantha</i>	4:2-<5%
<i>Swertia perennis</i>	4:2-<5%
<i>Rosaceae</i>	4:2-<5%
<i>Deschampsia cespitosa</i>	3:1-<2%
<i>Pedicularis groenlandica</i>	3:1-<2%
<i>Bistorta vivipara</i>	3:1-<2%
<i>Arnica mollis</i>	3:1-<2%
<i>Ligusticum porteri</i>	3:1-<2%
<i>Geum</i>	3:1-<2%
<i>Carex aquatilis</i>	3:1-<2%
<i>Carex diandra</i>	3:1-<2%

Scientific name	Cover Class
<i>Gentianopsis detonsa</i> var. <i>elegans</i>	2:<1%
<i>Veronica</i>	2:<1%
<i>Danthonia intermedia</i>	2:<1%
<i>Senecio</i>	2:<1%

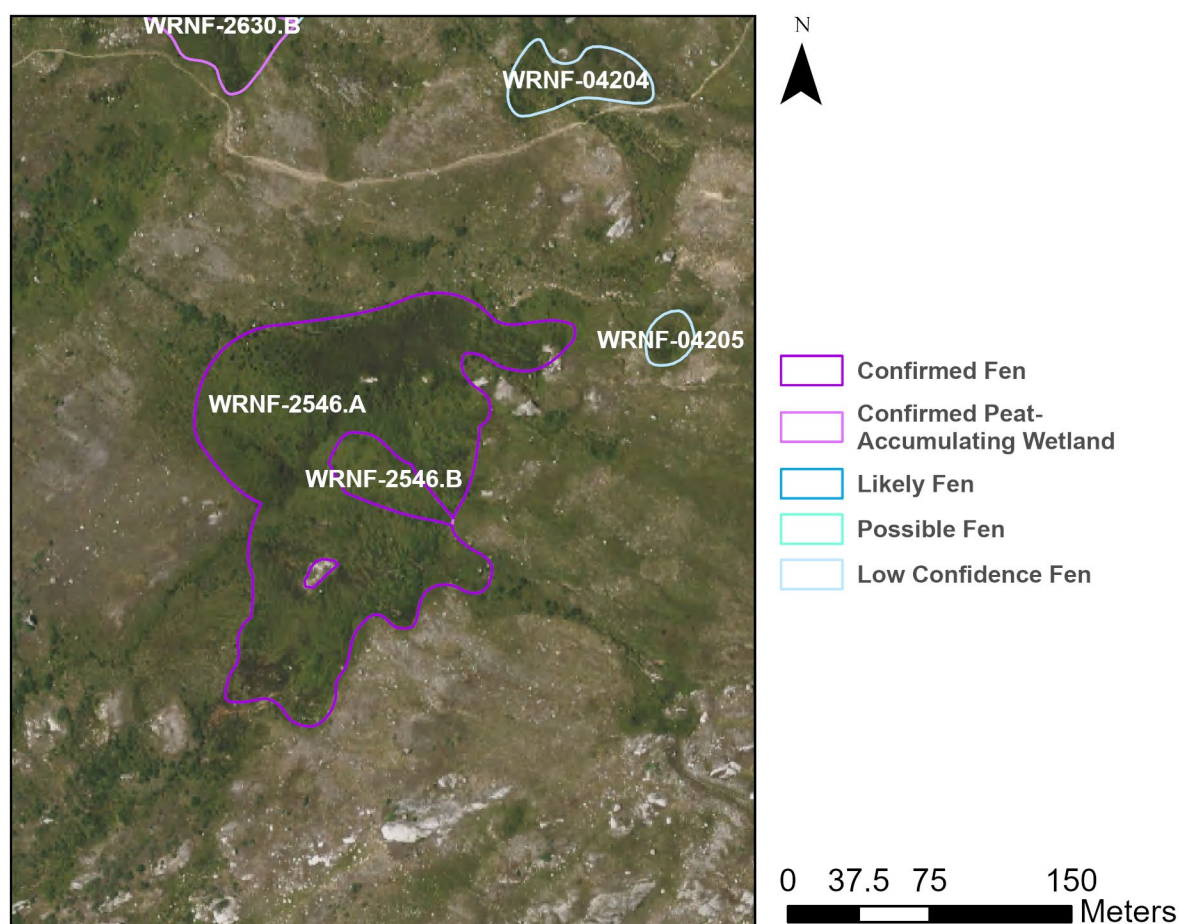


Table 25: Site characteristics of WRNF-2546

Latitude	39.13599641
Longitude	-106.5745884
Coordinate system	NAD83, UTM Zone 13
Elevation	3755 m (12,320 ft)
Survey Date	9/11/2024
Approximate peat depth	10 – 40 cm
Plant Association	CEGL001229: <i>Salix planifolia</i> / <i>Carex scopulorum</i> Shrub Fen

Site Description

Dominated by *Carex scopulorum* and *Salix planifolia*. Common fen forbs present as well. The wetland has a gentle slope towards the Roaring Fork. Site has channels with water running through along with some stagnant puddles.

Access Directions

From the eastern parking lot for Lost Man Loop, hike the trail about 1.93 km in, then cut south from the trail about 15 m to the polygon. Be prepared for a high chance of hail and thunderstorms in the afternoon.

Survey Notes

Appears untouched by humans in terms of physical impact. Some hunters appeared to be adjacent to the site when we arrived, and the site is very close to the trail.



Table 26: Species list for WRNF-2546

Scientific name	Cover Class
<i>Carex scopulorum</i>	8:50-<75%
<i>Salix planifolia</i>	7:25-<50%
<i>Caltha leptosepala</i>	5:5-<10%
<i>Juncus mertensianus</i>	4:2-<5%
<i>Juncus drummondii</i>	4:2-<5%
<i>Rhodiola rhodantha</i>	3:1-<2%
<i>Pedicularis groenlandica</i>	3:1-<2%
<i>Swertia perennis</i>	3:1-<2%
<i>Carex</i>	3:1-<2%
<i>Deschampsia cespitosa</i>	3:1-<2%
<i>Poaceae</i>	3:1-<2%
<i>Asteraceae</i>	3:1-<2%

Scientific name	Cover Class
<i>Ligusticum porteri</i>	3:1-<2%
<i>Rosaceae</i>	3:1-<2%
<i>Luzula parviflora</i>	2:<1%
<i>Bistorta vivipara</i>	2:<1%
<i>Castilleja occidentalis</i>	2:<1%
<i>Aconitum columbianum</i>	2:<1%
<i>Artemisia scopulorum</i>	2:<1%
<i>Arnica mollis</i>	2:<1%
<i>Gentiana algida</i>	2:<1%
<i>Carex microglochin</i>	2:<1%

WRNF-2560.A & WRNF-2560.B Chapman Gulch

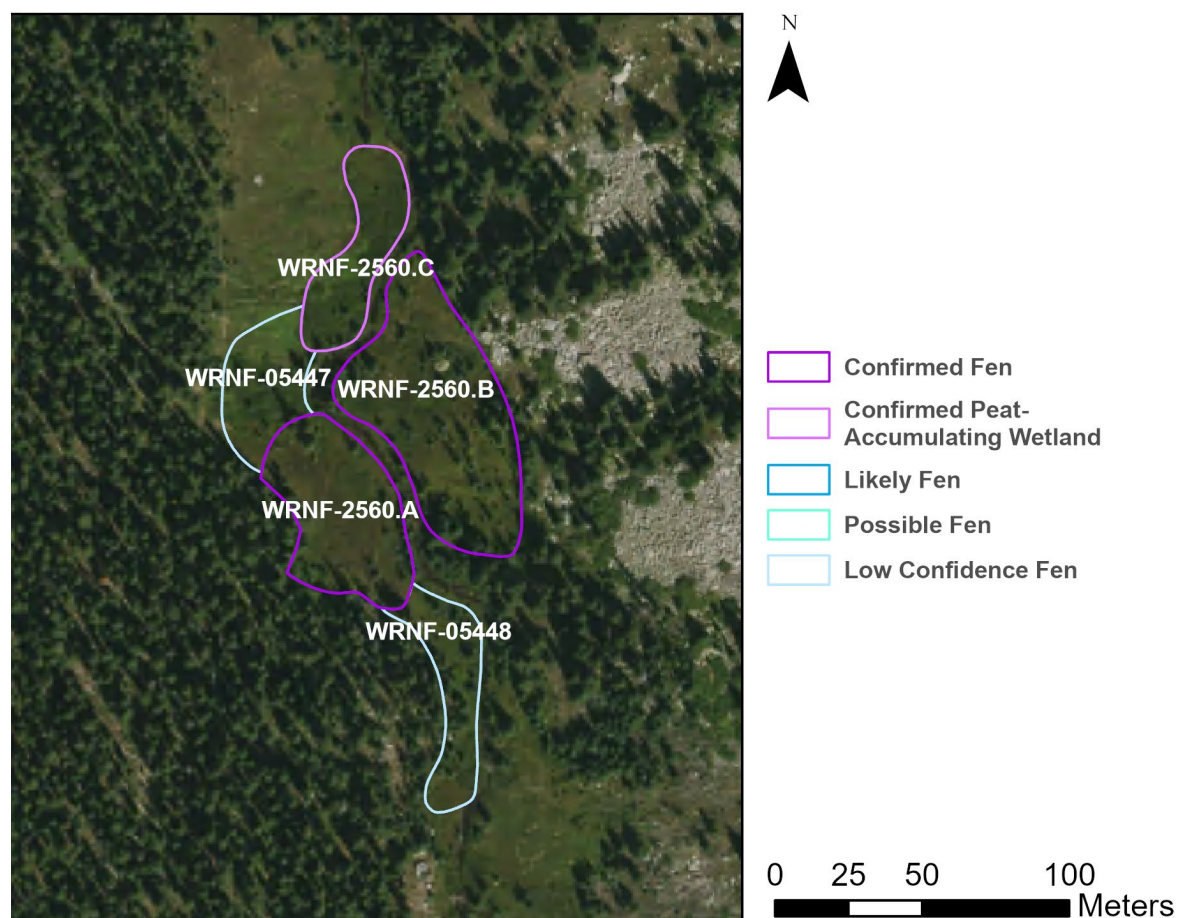


Table 27: Site characteristics of WRNF-2560.A & WRNF-2560.B

Latitude	39.24333552
Longitude	-106.62483
Coordinate system	NAD83, UTM Zone 13
Elevation	3215 m (10,548 ft)
Survey Date	9/14/2024
Approximate peat depth	10 – 85 cm
Plant Community	Alliance A3435. <i>Carex limosa</i> - <i>Carex buxbaumii</i> - <i>Triglochin maritima</i> Alkaline Graminoid Fen Alliance

Site Description

Sampled late in the season, not all species could be identified. *Sphagnum* is present. *Carex capillaris* found outside the polygon on the western side, less in the polygon. At the western edge of the willows is the edge of groundwater expression from the creek.

Access Directions

From the Chapman Gulch Trailhead, hike in ~2.4 km to the site. The site is directly east of the trail.

Survey Notes

Despite being directly east of the Chapman Gulch Trail, the site appears pristine. Some ungulate tracks in the site, but no obvious herbivory.



Table 28: Species list for WRNF-2560.A & WRNF-2560.B

Scientific name	Cover Class
<i>Carex magellanica</i> ssp. <i>irrigua</i>	6:10-<25%
<i>Carex capillaris</i>	5:5-<10%
<i>Caltha leptosepala</i>	4:2-<5%
<i>Salix planifolia</i>	4:2-<5%
<i>Calamagrostis canadensis</i>	4:2-<5%
<i>Swertia perennis</i>	4:2-<5%
<i>Eriophorum angustifolium</i>	3:1-<2%
<i>Rhodiola rhodantha</i>	3:1-<2%
<i>Ligusticum porteri</i>	3:1-<2%
<i>Carex nova</i>	3:1-<2%
<i>Equisetum arvense</i>	3:1-<2%
<i>Arnica mollis</i>	2:<1%
<i>Bistorta vivipara</i>	2:<1%
<i>Senecio triangularis</i>	2:<1%
<i>Luzula parviflora</i>	2:<1%

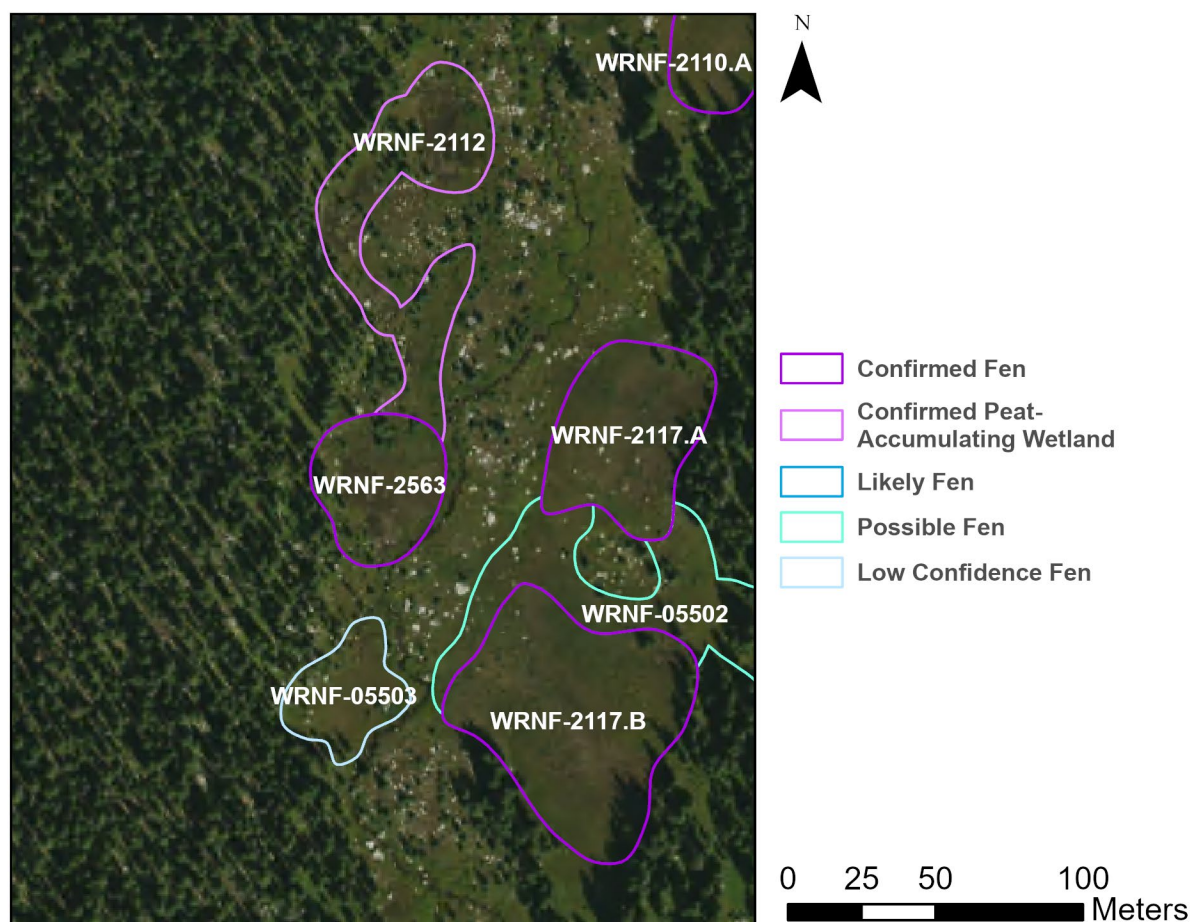


Table 29: Site characteristics of WRNF-2563

Latitude	39.22728329
Longitude	-106.6215795
Coordinate system	NAD83, UTM Zone 13
Elevation	3360 m (11,024 ft)
Survey Date	9/14/2024
Approximate peat depth	15 – 40 cm
Plant Association	CEGL001822: <i>Carex scopulorum</i> Wet Meadow

Site Description

To the west side of polygon, 40 cm of peat. Site is largely dominated by graminoids and some common fen forbs. The site slopes slightly towards the creek that flows to the east.

Access Directions

From the Chapman Gulch Trailhead, hike approximately 4.17 km. On that hike, about two miles in at (39.23554, -106.62234), there are a lot of downed trees because of an avalanche, and the trail is hard/impossible to find, requiring lots of bushwhacking.

Survey Notes

Some ungulate tracks, but the site is in pristine condition.



Table 30: Species list for WRNF-2563

Scientific name	Cover Class
<i>Carex scopulorum</i>	6:10-<25%
<i>Calamagrostis canadensis</i>	6:10-<25%
<i>Carex magellanica</i> ssp. <i>irrigua</i>	5:5-<10%
<i>Deschampsia cespitosa</i>	4:2-<5%
<i>Caltha leptosepala</i>	4:2-<5%
<i>Salix planifolia</i>	4:2-<5%
<i>Eriophorum angustifolium</i>	3:1-<2%
<i>Picea engelmannii</i> var. <i>engelmannii</i>	2:<1%
<i>Rhodiola rhodantha</i>	2:<1%
<i>Packera</i>	2:<1%
<i>Muhlenbergia filiformis</i>	2:<1%

Scientific name	Cover Class
<i>Arnica mollis</i>	2:<1%
<i>Ligusticum porteri</i>	2:<1%
<i>Carex nova</i>	2:<1%
<i>Epilobium ciliatum</i>	2:<1%
<i>Danthonia intermedia</i>	2:<1%

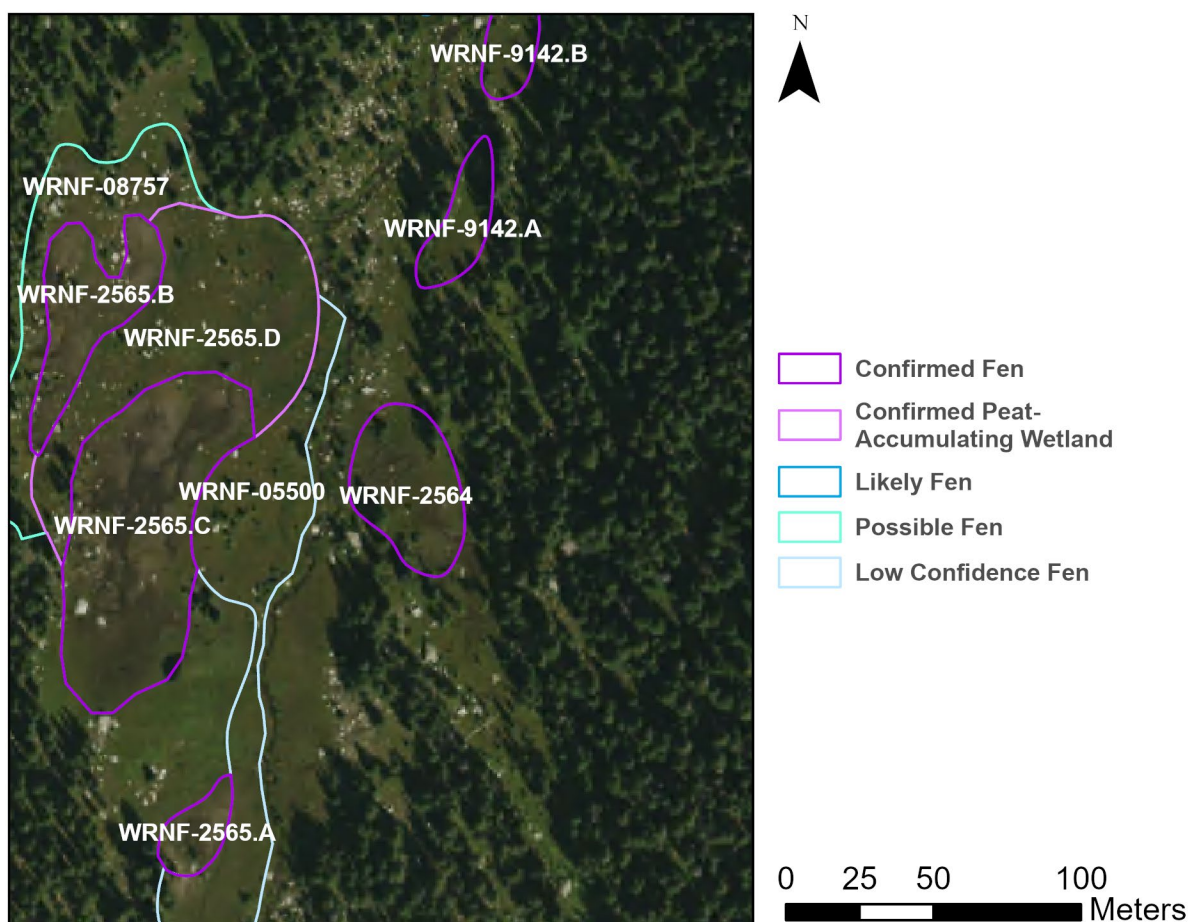


Table 31: Site characteristics of WRNF-2564

Latitude	39.22215168
Longitude	-106.6205653
Coordinate system	NAD83, UTM Zone 13
Elevation	3426 m (11,240 ft)
Survey Date	9/14/2024
Approximate peat depth	40 – 50 cm
Plant Association	CEGL001802: <i>Carex aquatilis</i> Wet Meadow

Site Description

Carex and *Eleocharis* dominated. Some woodies are present such as *Salix* and *Picea*. Common fen plants are also present. The fen is 2 tiered; the upper tier is on the south side of polygon and contains more fen species. Dry creek through plot.

Access Directions

From the Chapman Gulch Trailhead, hike down the trail about 4.75 km. At around (39.23554, -106.62234), there are many downed trees from an avalanche, and the trail becomes hard/impossible to navigate, and requires a lot of bushwhacking. From 4.75 km in on the trail, hike east approximately 150 m to the polygon. Doing so will require crossing Chapman Creek, which is easy to do.

Survey Notes

Pristine. Some ungulate tracks in the site, but no obvious herbivory.



Table 32: Species list for WRNF-2564

Scientific name	Cover Class
<i>Carex aquatilis</i>	7:25-<50%
<i>Eleocharis pauciflora</i>	6:10-<25%
<i>Caltha leptosepala</i>	5:5-<10%
<i>Carex scopulorum</i>	4:2-<5%
<i>Picea engelmannii</i> var. <i>engelmannii</i>	4:2-<5%
<i>Poaceae</i>	4:2-<5%
<i>Deschampsia cespitosa</i>	3:1-<2%
<i>Rhodiola rhodantha</i>	3:1-<2%
<i>Pedicularis groenlandica</i>	3:1-<2%
<i>Packera</i>	3:1-<2%
<i>Salix planifolia</i>	3:1-<2%

Scientific name	Cover Class
<i>Vaccinium cespitosum</i>	3:1-<2%
<i>Bistorta vivipara</i>	2:<1%
<i>Ligusticum porteri</i>	2:<1%
<i>Arnica mollis</i>	2:<1%
<i>Carex nova</i>	2:<1%
<i>Epilobium ciliatum</i>	2:<1%
<i>Packera</i>	2:<1%
<i>Carex nigricans</i>	2:<1%
<i>Swertia perennis</i>	2:<1%
<i>Juncus drummondii</i>	2:<1%
<i>Bistorta vivipara</i>	2:<1%

WRNF-2565.A, B & C

Chapman Gulch

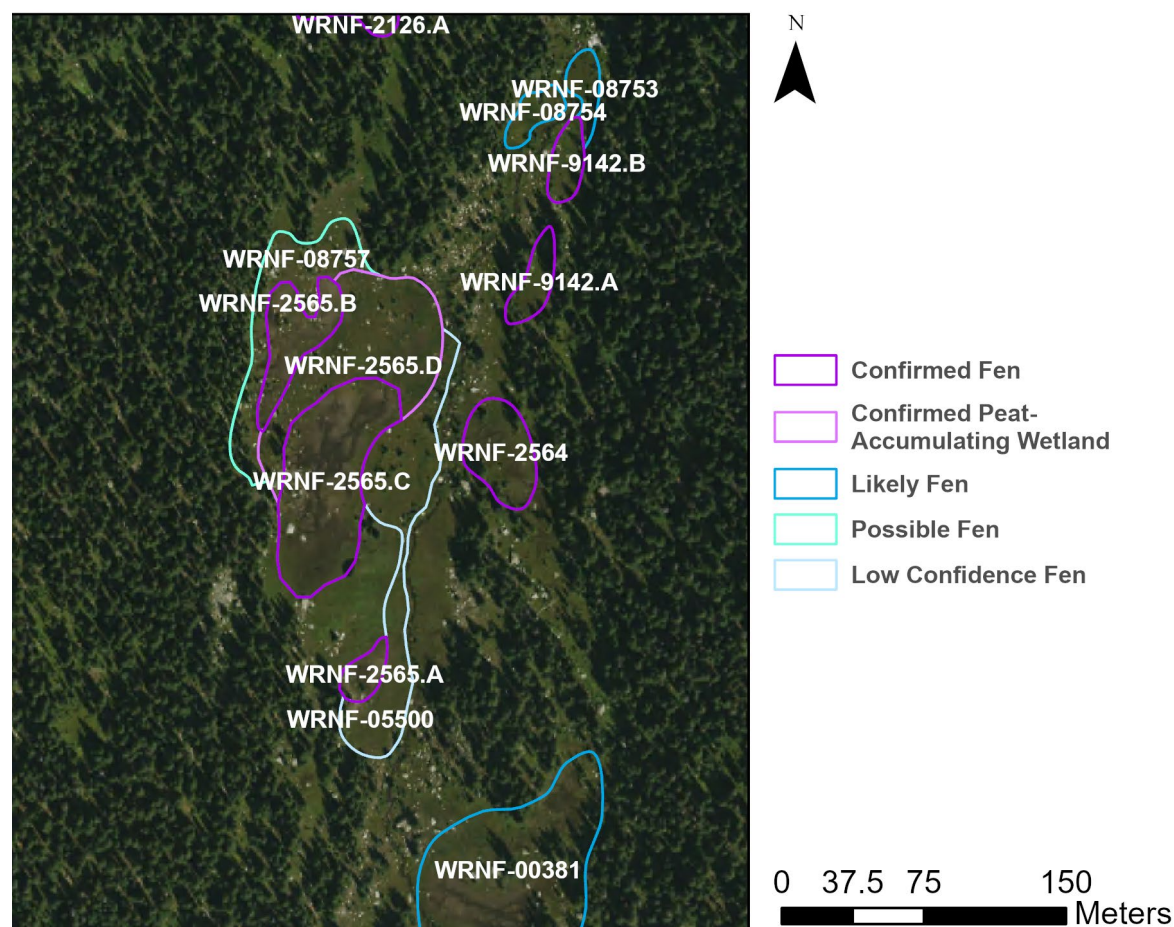


Table 33: Site characteristics of WRNF-2565.A, B & C

Latitude	39.22168963
Longitude	-106.6214928
Coordinate system	NAD83, UTM Zone 13
Elevation	3427 m (11,243 ft)
Survey Date	9/14/2024
Approximate peat depth	25 – 50 cm
Plant Association	CEGL001836: <i>Eleocharis quinqueflora</i> Fen

Site Description

Hemic fen species. *Carex* dominated with *Salix planifolia* on the margins. Some sparsely vegetated sections with *Carex* and *Eleocharis* are most saturated with water. Polygon is sloped with groundwater running centrally through it. The site is terraced downslope with upwelling present. The western end of plot is most wet and dominated by *Carex* and *Eleocharis*.

Access Directions

From the Chapman Gulch Trailhead, hike 4.75 km down the trail into the fen (the trail crosses into the polygon). At around (39.23554, -106.62234) there are a lot of downed trees from an avalanche, where the trail is hard/impossible to find, and requires a lot of bushwhacking.

Survey Notes

Site in pristine condition. Grazing and tracks from native ungulates present.



Table 34: Species list for WRNF-2565.A, B & C

Scientific name	Cover Class
<i>Carex aquatilis</i>	6:10-<25%
<i>Eleocharis pauciflora</i>	6:10-<25%
<i>Carex utriculata</i>	5:5-<10%
<i>Salix planifolia</i>	4:2-<5%
<i>Carex scopulorum</i>	3:1-<2%
<i>Caltha leptosepala</i>	3:1-<2%
<i>Rhodiola rhodantha</i>	3:1-<2%
<i>Deschampsia cespitosa</i>	3:1-<2%
<i>Calamagrostis canadensis</i>	3:1-<2%
<i>Danthonia intermedia</i>	3:1-<2%
<i>Pedicularis groenlandica</i>	3:1-<2%
<i>Carex nova</i>	3:1-<2%
<i>Vaccinium cespitosum</i>	3:1-<2%

Scientific name	Cover Class
<i>Caltha leptosepala</i>	3:1-<2%
<i>Senecio triangularis</i>	2:<1%
<i>Arnica mollis</i>	2:<1%
<i>Carex illota</i>	2:<1%
<i>Epilobium ciliatum</i>	2:<1%
<i>Trisetum spicatum</i>	2:<1%
<i>Phleum alpinum</i>	2:<1%
<i>Juncus drummondii</i>	2:<1%
<i>Carex magellanica</i> ssp. <i>irrigua</i>	2:<1%

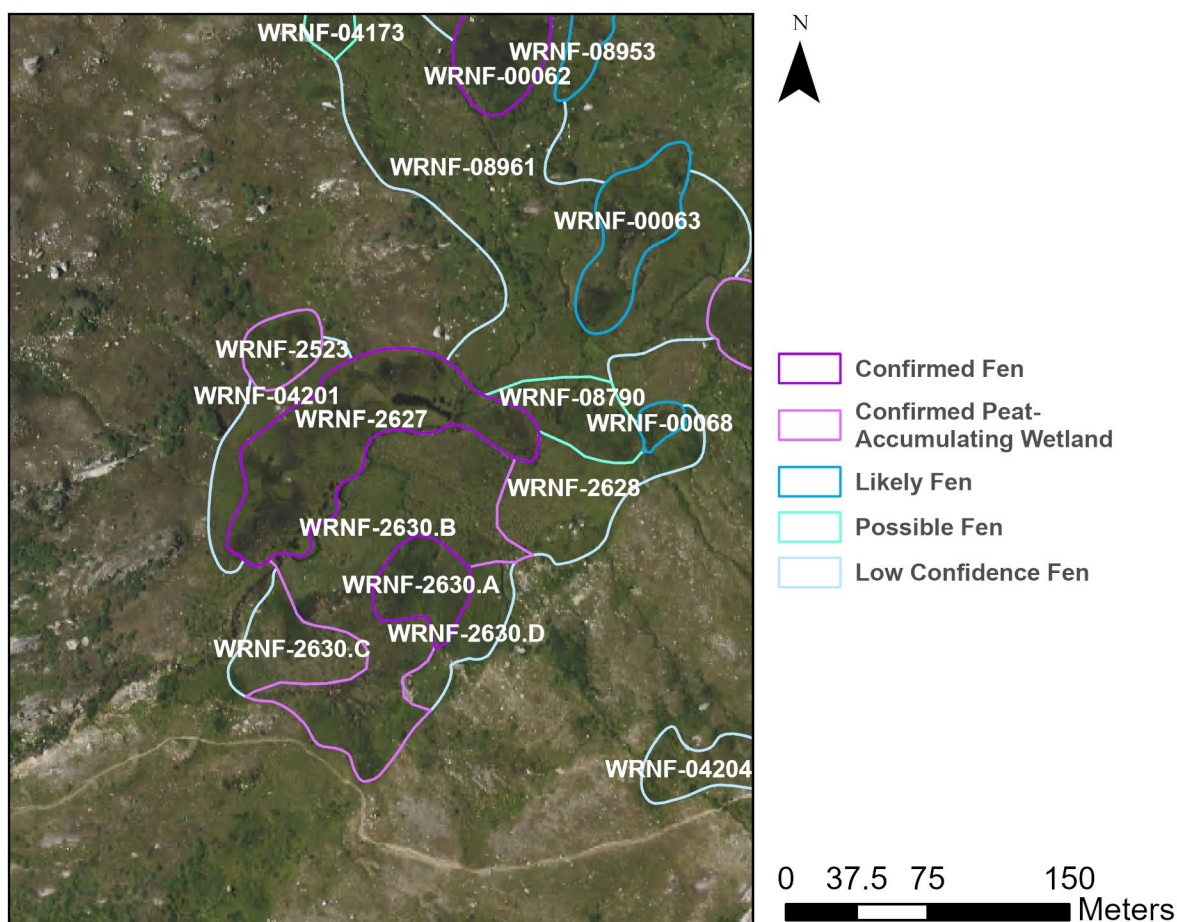


Table 35: Site characteristics of WRNF-2627

Latitude	39.1388225
Longitude	-106.5755923
Coordinate system	NAD83, UTM Zone 13
Elevation	3725 m (12,221 ft)
Survey Date	9/11/2024
Approximate peat depth	3 – 75 cm
Plant Association	CEGL001822: <i>Carex scopulorum</i> Wet Meadow

Site Description

The site is dominated by *Carex scopulorum*, with several other forbs mixed in as well. The wetland is at a gentle slope towards the Roaring Fork.

Access Directions

From the eastern trailhead for Lost Man Loop, hike up about 1.8 km on trail. Then, cut north from the trail and hike about 10 m into the site. Creek crossing is required, but easy to do so.

Survey Notes

Site appears untouched.



Table 36: Species list for WRNF-2627

Scientific name	Cover Class
<i>Carex scopulorum</i>	8:50-<75%
<i>Deschampsia cespitosa</i>	6:10-<25%
<i>Rhodiola rhodantha</i>	5:5-<10%
<i>Ligusticum porteri</i>	5:5-<10%
<i>Caltha leptosepala</i>	5:5-<10%
<i>Carex canescens</i> ssp. <i>canescens</i>	4:2-<5%
<i>Epilobium ciliatum</i>	3:1-<2%
<i>Pedicularis groenlandica</i>	3:1-<2%
<i>Potentilla</i>	3:1-<2%
<i>Antennaria</i>	3:1-<2%
<i>Artemisia scopulorum</i>	3:1-<2%
<i>Castilleja occidentalis</i>	2:<1%
<i>Gentiana algida</i>	2:<1%

Scientific name	Cover Class
<i>Poaceae</i>	2:<1%
<i>Juncus drummondii</i>	2:<1%
<i>Bistorta bistortoides</i>	2:<1%
<i>Bistorta vivipara</i>	2:<1%
<i>Danthonia intermedia</i>	2:<1%

WRNF-2630.A

Lost Man Loop

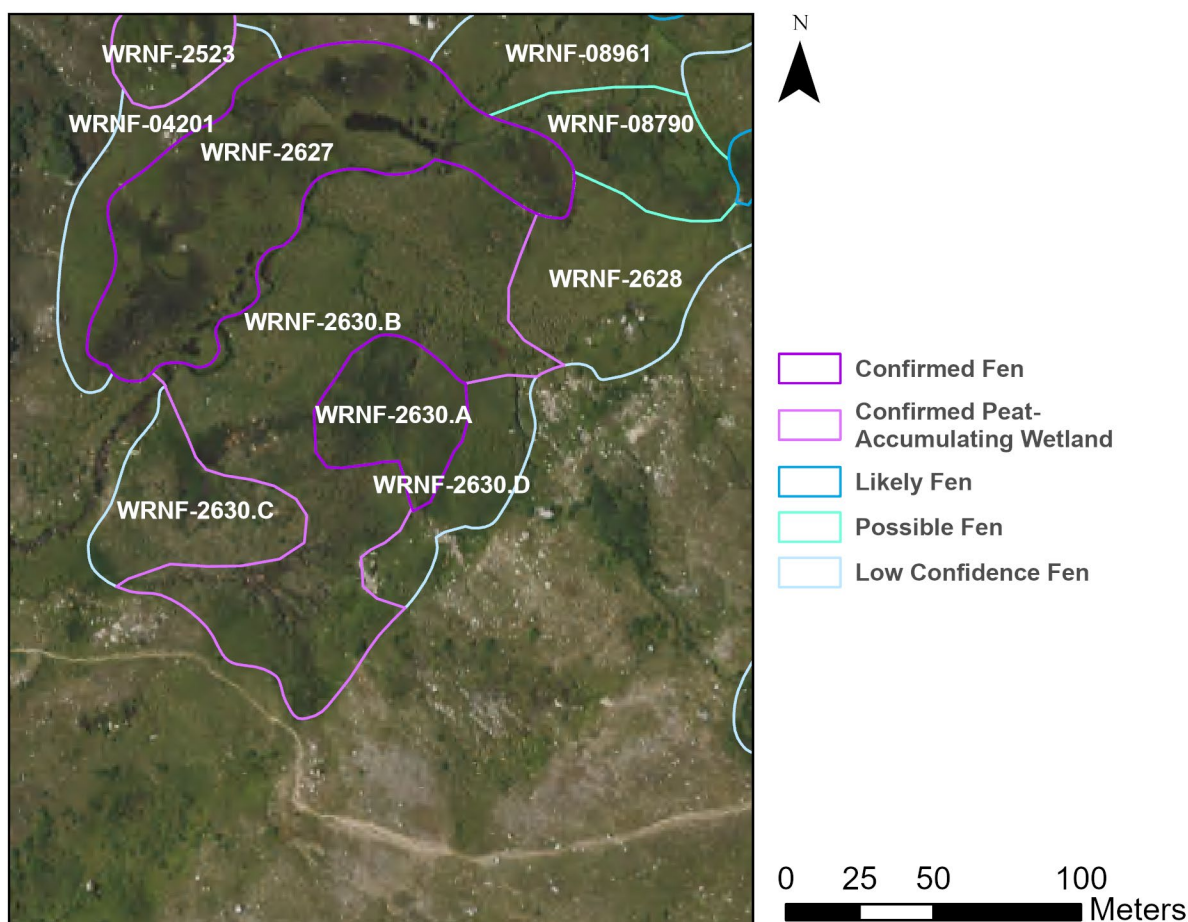


Table 37: Site characteristics of WRNF-2630.A

Latitude	39.13797934
Longitude	-106.5751961
Coordinate system	NAD83, UTM Zone 13
Elevation	3727 m (12,228 ft)
Survey Date	9/11/2024
Approximate peat depth	5 – 45 cm
Plant Association	CEGL001802: <i>Carex aquatilis</i> Wet Meadow

Site Description

Low lying vegetation is dominated by *Carex* species. *Salix* and common fen forbs are also present. The wetland has a gentle slope toward Roaring Fork River. Some areas have higher peat accumulations than others. ~5 to 40 cm.

Access Directions

From the eastern Lost Man Trailhead, hike up Lost Man Trail approximately 1.78 km. From there, hike about 25 m north to the site. Not much cover nearby, so monitor the skies for changes in weather patterns. Expect hail/thunderstorms in the afternoon.

Survey Notes

Low impact site. No obvious human impact (despite being right next to a highly used trail) or herbivory. Water flows downslope from East to West in small channels and forms some pools.



Table 38: Species list for WRNF-2630.A

Scientific name	Cover Class
<i>Carex aquatilis</i>	7:25-<50%
<i>Carex scopulorum</i>	6:10-<25%
<i>Caltha leptosepala</i>	4:2-<5%
<i>Salix planifolia</i>	4:2-<5%
<i>Rhodiola rhodantha</i>	3:1-<2%
<i>Pedicularis groenlandica</i>	3:1-<2%
<i>Deschampsia cespitosa</i>	3:1-<2%
<i>Artemisia scopulorum</i>	3:1-<2%
<i>Potentilla</i>	2:<1%
<i>Eleocharis pauciflora</i>	2:<1%
<i>Bistorta vivipara</i>	2:<1%
<i>Poaceae</i>	2:<1%

Scientific name	Cover Class
<i>Gentiana algida</i>	2:<1%
<i>Juncus mertensianus</i>	2:<1%
<i>Asteraceae</i>	2:<1%
<i>Arnica mollis</i>	2:<1%
<i>Juncus drummondii</i>	2:<1%
<i>Rosaceae</i>	2:<1%
<i>Aconitum columbianum</i>	2:<1%
<i>Vaccinium cespitosum</i>	2:<1%
<i>Luzula parviflora</i>	2:<1%
<i>Carex microglochin</i>	1: trace

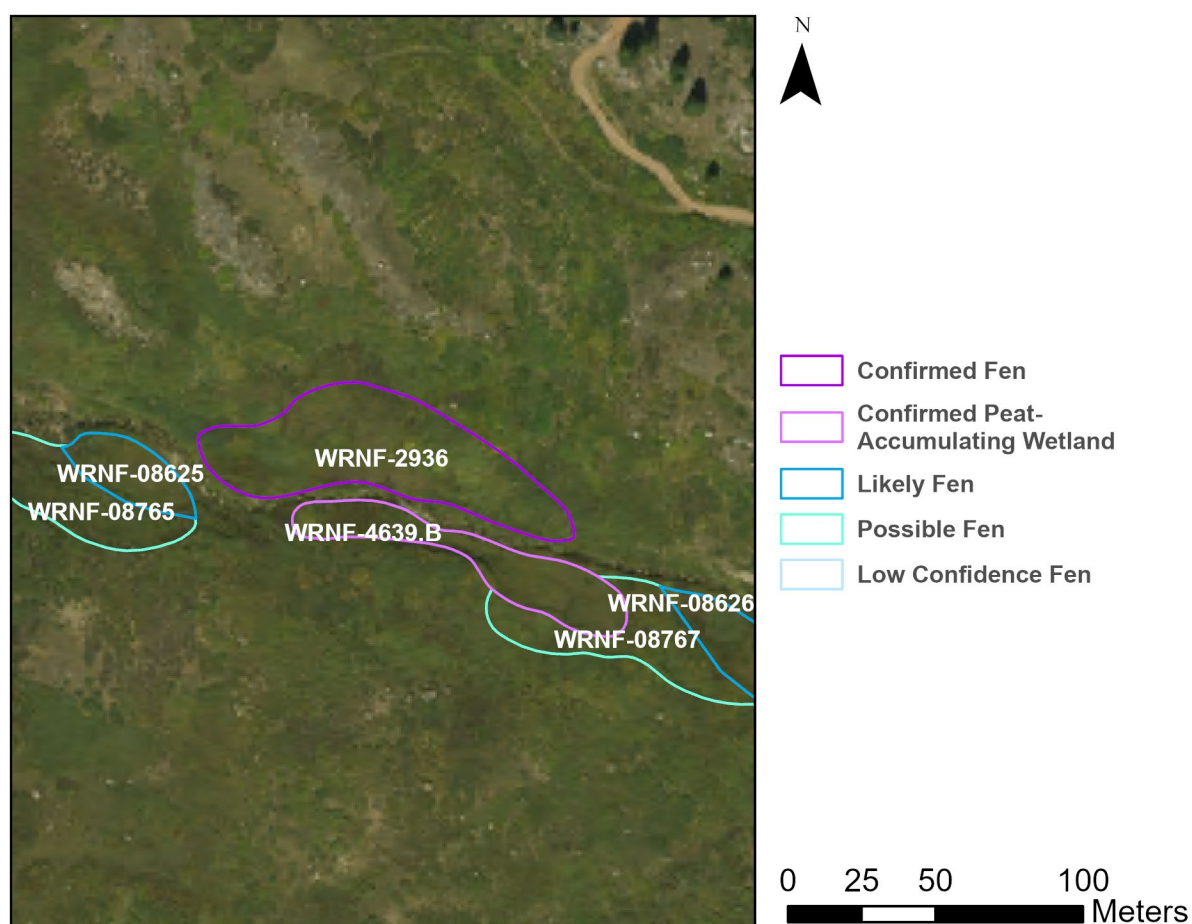


Table 39: Site characteristics of WRNF-2936

Latitude	39.71697011
Longitude	-107.3111552
Coordinate system	NAD83, UTM Zone 13
Elevation	3195 m (10,482 ft)
Survey Date	8/27/2024
Approximate peat depth	0 – 40 cm
Plant Association	CEGL001240: <i>Salix wolfii</i> / Mesic Forbs Wet Shrubland

Site Description

Site vegetation consists of dominant of *Carex aquatilis* and *Deschampsia cespitosa*, as well as a lot of *Swertia perennis* and *Eriophorum gracile*. The site generally slopes into Grizzly Creek, some areas of the original mapped fen are not a fen, others are lush with moss and organic soil. Not all of the originally mapped areas are fen.

Access Directions

From the coordinates 39.71972, -107.25219 on Coffee Pot Road, turn left and drive along somewhat used jeep trail for ~10km until it's impossible to keep going, hike in about 50 m into polygon. The fen area in polygon is adjacent to Grizzly Creek.

Survey Notes

Site is adjacent to an infrequently used jeep trail/road but appears to have no human use or herbivory within the wetland itself.



Table 40: Species list for WRNF-2936

Scientific name	Cover Class
<i>Salix wolfii</i> var. <i>wolfii</i>	6:10-<25%
<i>Carex aquatilis</i>	5:5-<10%
<i>Swertia perennis</i>	4:2-<5%
<i>Rosaceae</i>	4:2-<5%
<i>Deschampsia cespitosa</i>	4:2-<5%
<i>Potentilla fruticosa</i>	4:2-<5%
<i>Bistorta vivipara</i>	3:1-<2%
<i>Viola</i>	3:1-<2%
<i>Antennaria pulcherrima</i>	3:1-<2%
<i>Gentianopsis detonsa</i> var. <i>elegans</i>	3:1-<2%
<i>Eriophorum gracile</i>	3:1-<2%

Scientific name	Cover Class
<i>Thalictrum</i>	2:<1%
<i>Equisetum hyemale</i> ssp. <i>affine</i>	2:<1%
<i>Caltha leptosepala</i>	2:<1%
<i>Ligusticum porteri</i>	2:<1%
<i>Orchidaceae</i>	2:<1%

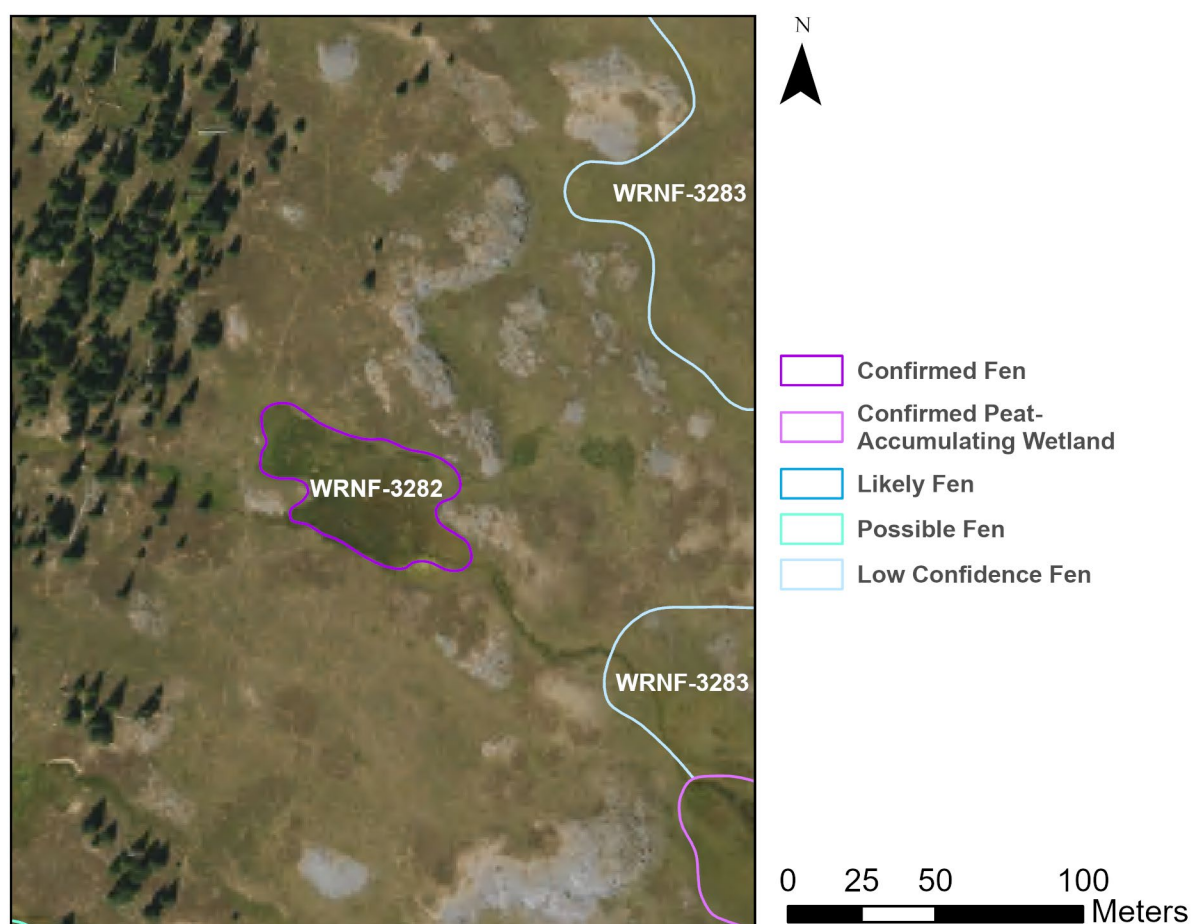


Table 41: Site characteristics of WRNF-3282

Latitude	39.93584746
Longitude	-107.2778297
Coordinate system	NAD83, UTM Zone 13
Elevation	3350 m (10,991 ft)
Survey Date	8/29/2024
Approximate peat depth	50 cm
Plant Association	CEGL001802: <i>Carex aquatilis</i> Wet Meadow

Site Description

The site is largely dominated by *Carex aquatilis* with decent forb cover as well. The site has a gentle slope towards the small channel that flows at the south end of the site.

Access Directions

From the Meadows Trailhead, hike in about 9.2 km on the South Fork Trail/Doe Creek Trail, then cut east about 2.66 km overland to the polygon. This site was sampled on a backpacking trip with some creek crossings and a lot of elevation gain. A truck with good clearance and 4wd is necessary to get to the trailhead.

Survey Notes

The site appears pristine.



Table 42: Species list for WRNF-3282

Scientific name	Cover Class
<i>Carex aquatilis</i>	8:50-<75%
<i>Caltha leptosepala</i>	4:2-<5%
<i>Agrostis gigantea</i>	4:2-<5%
<i>Carex nebrascensis</i>	4:2-<5%
<i>Phleum alpinum</i>	3:1-<2%
<i>Salix planifolia</i>	3:1-<2%
<i>Juncus longistylis</i>	3:1-<2%
<i>Calamagrostis stricta</i>	3:1-<2%
<i>Antennaria corymbosa</i>	3:1-<2%
<i>Eleocharis pauciflora</i>	3:1-<2%
<i>Epilobium ciliatum</i>	2:<1%
<i>Taraxacum officinale</i>	2:<1%

Scientific name	Cover Class
<i>Festuca</i>	2:<1%
<i>Carex</i>	2:<1%

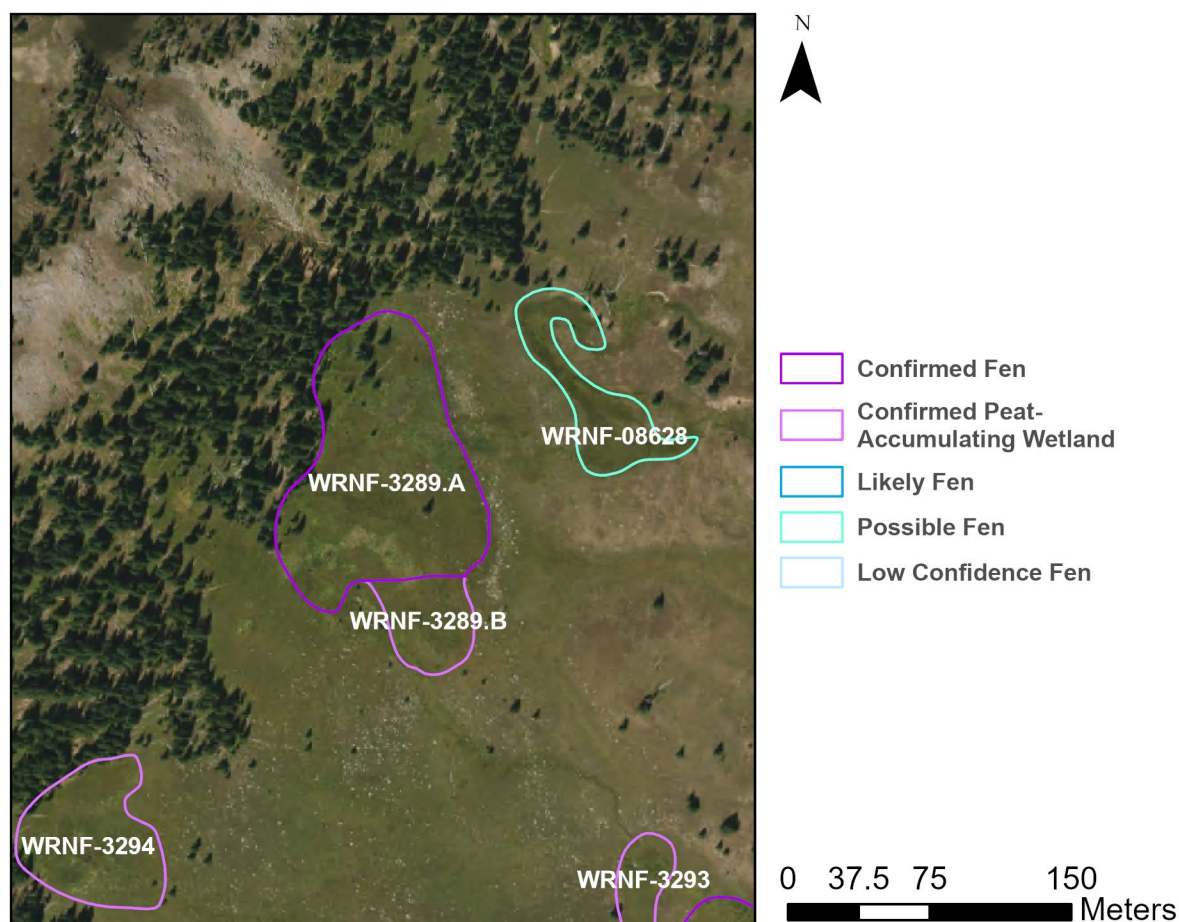


Table 43: Site characteristics of WRNF-3289.A

Latitude	39.93387102
Longitude	-107.2807037
Coordinate system	NAD83, UTM Zone 13
Elevation	3365 m (11,040 ft)
Survey Date	8/29/2024
Approximate peat depth	3 – 50 cm
Plant Association	CEGL001227: <i>Salix planifolia</i> / <i>Carex aquatilis</i> Wet Shrubland

Site Description

The site is largely dominated by *Carex aquatilis* and *Calamagrostis canadensis*. Lots of *Salix planifolia*, *Caltha leptosepala*, and other common fen plants. The wetland is sloping with some channels running through it.

Access Directions

From The Meadows Trailhead, hike up the South Fork Trail/Doe Creek Trail for about 9 km. Then head east off trail about 2.4 km to the polygon. Expect creek crossings and lots of elevation gain. A truck with good clearance and 4wd is necessary to get to the trailhead.

Survey Notes

The site appears untouched by humans. Some ungulate bedding present, as well as some minor grazing on *Salix planifolia*.



Table 44: Species list for WRNF-3289.A

Scientific name	Cover Class
<i>Salix planifolia</i>	6:10-<25%
<i>Carex aquatilis</i>	6:10-<25%
<i>Calamagrostis canadensis</i>	6:10-<25%
<i>Caltha leptosepala</i>	5:5-<10%
<i>Carex neurophora</i>	5:5-<10%
<i>Phleum alpinum</i>	4:2-<5%
<i>Pedicularis groenlandica</i>	4:2-<5%
<i>Agrostis gigantea</i>	4:2-<5%
<i>Carex utriculata</i>	4:2-<5%
<i>Senecio triangularis</i>	4:2-<5%
<i>Arnica mollis</i>	3:1-<2%
<i>Trisetum spicatum</i>	3:1-<2%

Scientific name	Cover Class
<i>Rhodiola rhodantha</i>	3:1-<2%
<i>Carex illota</i>	3:1-<2%
<i>Swertia perennis</i>	3:1-<2%
<i>Veronica</i>	2:<1%
<i>Poaceae</i>	2:<1%
<i>Epilobium ciliatum</i>	2:<1%
<i>Platanthera</i>	2:<1%
<i>Juncus mertensianus</i>	2:<1%
<i>Juncus longistylis</i>	2:<1%

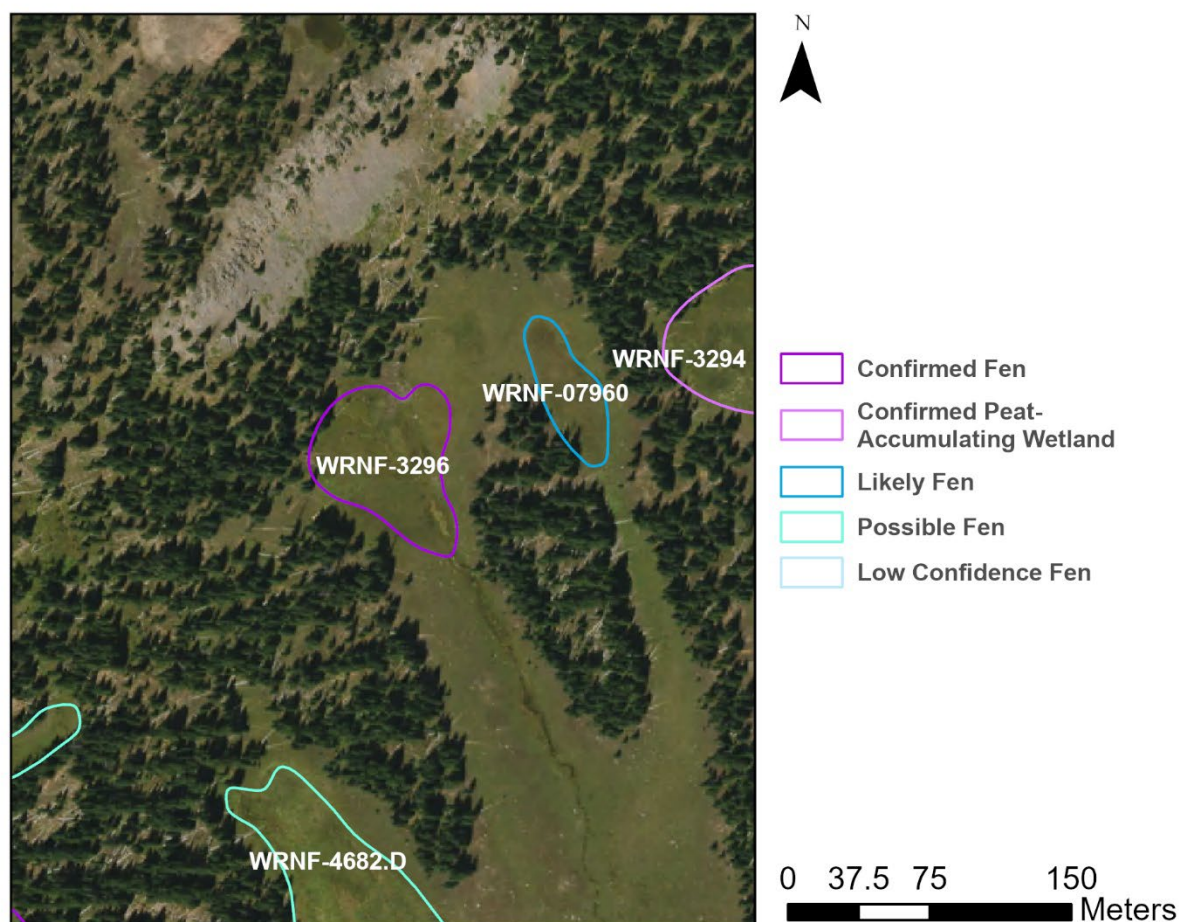


Table 45: Site characteristics of WRNF-3289

Latitude	39.93187552
Longitude	-107.2843825
Coordinate system	NAD83, UTM Zone 13
Elevation	3365 m (11,043 ft)
Survey Date	8/29/2024
Approximate peat depth	50 cm
Plant Association	CEGL001802: <i>Carex aquatilis</i> Wet Meadow

Site Description

Wetland is *Carex* dominated with high variety of forbs. Gently sloping wetland with lots of large rocks within site. Thick layer of organic soil.

Access Directions

From The Meadows Trailhead, hike ~9.2 km in along the South Fork/Doe Creek Trail, then hike overland to the east approximately 1.8 km to the site. This site was accessed on a backpacking trip with some creek crossings and lots of elevation gain. A truck with good clearance and 4wd is necessary to get to the trailhead.

Survey Notes

Site in good condition. Appears untouched by humans.



Table 46: Species list for WRNF-3289

Scientific name	Cover Class
<i>Carex aquatilis</i>	6:10-<25%
<i>Carex utriculata</i>	5:5-<10%
<i>Mimulus</i>	4:2-<5%
<i>Caltha leptosepala</i>	4:2-<5%
<i>Deschampsia cespitosa</i>	4:2-<5%
<i>Pedicularis groenlandica</i>	3:1-<2%
<i>Phleum alpinum</i>	3:1-<2%
<i>Arnica mollis</i>	3:1-<2%
<i>Rhodiola rhodantha</i>	3:1-<2%
<i>Senecio triangularis</i>	3:1-<2%
<i>Swertia perennis</i>	3:1-<2%
<i>Rosaceae</i>	2:<1%

Scientific name	Cover Class
<i>Juncus longistylis</i>	2:<1%
<i>Veratrum californicum</i>	2:<1%
<i>Veronica</i>	2:<1%
<i>Epilobium ciliatum</i>	2:<1%
<i>Erigeron</i>	2:<1%
<i>Rumex</i>	2:<1%

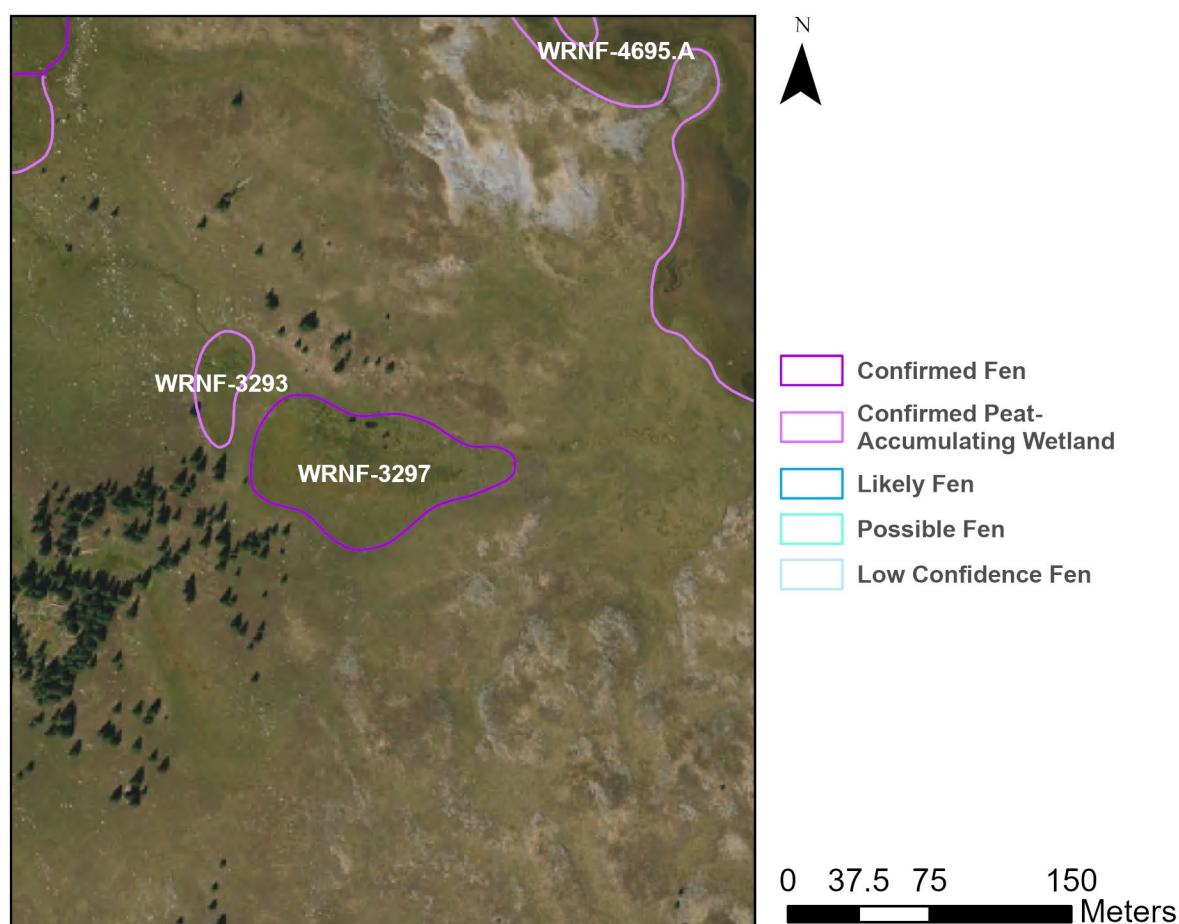


Table 47: Site characteristics of WRNF-3297

Latitude	39.93196712
Longitude	-107.2785155
Coordinate system	NAD83, UTM Zone 13
Elevation	3340 m (10,958 ft)
Survey Date	8/29/2024
Approximate peat depth	50 cm
Plant Association	CEGL002665: <i>Salix planifolia</i> / <i>Caltha leptosepala</i> Wet Shrubland

Site Description

The site is dominated by *Salix* and *Carex* with a high composition of *Caltha leptosepala*. The wetland has a slight slope towards the small channel that flows through it.

Access Directions

From The Meadows Trailhead, hike into the Fat Tops Wilderness Area about 9.4 km, then hike off trail to the east for another 2.3 km to the polygon. This site was accessed on a backpacking trip with some creek crossings and lots of elevation gain. A truck with good clearance and 4wd is necessary to get to the trailhead.

Survey Notes

The site appears untouched.



Table 48: Species list for WRNF-3297

Scientific name	Cover Class
<i>Carex neurophora</i>	7:25-<50%
<i>Salix planifolia</i>	6:10-<25%
<i>Caltha leptosepala</i>	6:10-<25%
<i>Carex aquatilis</i>	5:5-<10%
<i>Swertia perennis</i>	4:2-<5%
<i>Agrostis gigantea</i>	4:2-<5%
<i>Pedicularis groenlandica</i>	4:2-<5%
<i>Rhodiola rhodantha</i>	3:1-<2%
<i>Phleum alpinum</i>	3:1-<2%
<i>Platanthera</i>	3:1-<2%
<i>Arnica mollis</i>	3:1-<2%
<i>Calamagrostis canadensis</i>	3:1-<2%

Scientific name	Cover Class
<i>Mimulus</i>	3:1-<2%
<i>Senecio triangularis</i>	2:<1%
<i>Epilobium ciliatum</i>	2:<1%
<i>Veronica</i>	2:<1%
<i>Bistorta vivipara</i>	2:<1%
<i>Calamagrostis stricta</i>	2:<1%
<i>Erigeron</i>	2:<1%

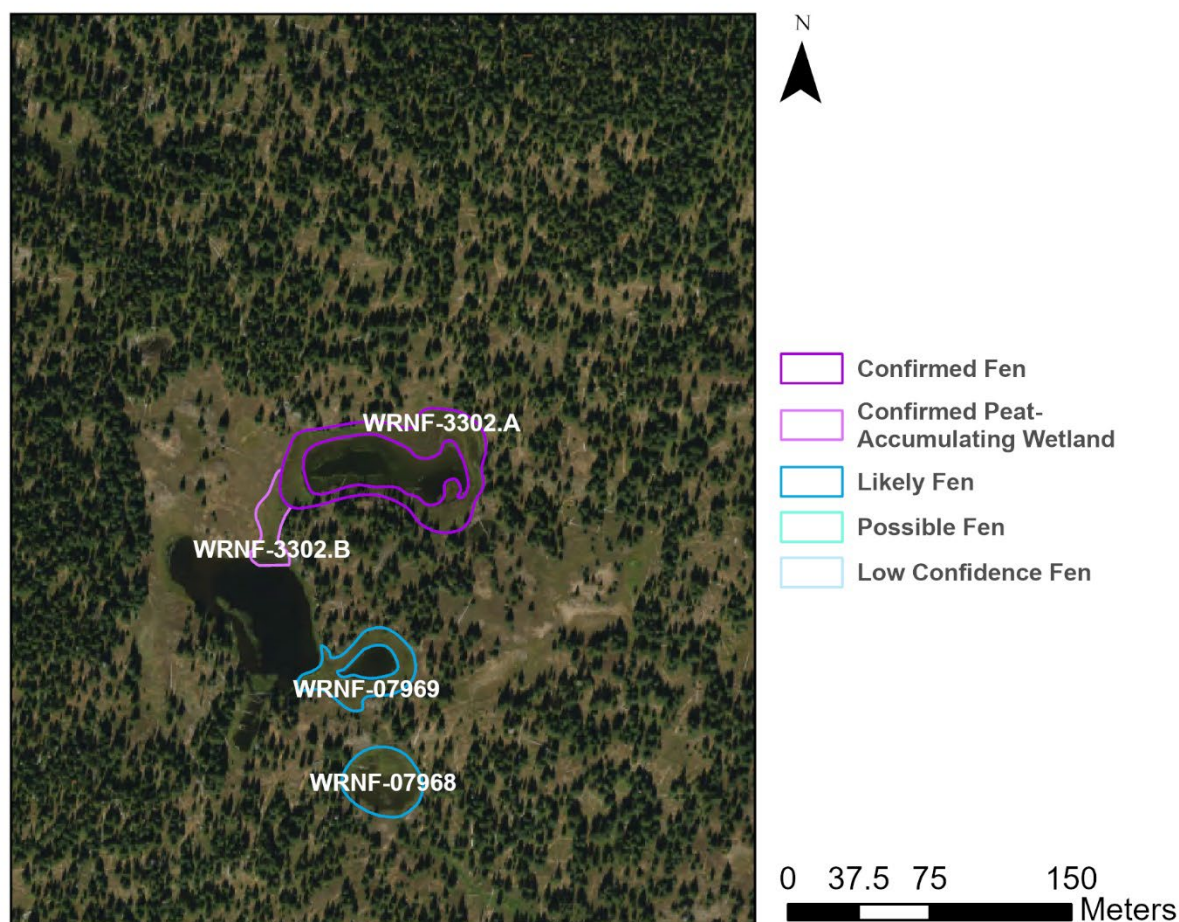


Table 49: Site characteristics of WRNF-3302.A

Latitude	39.92690546
Longitude	-107.3216449
Coordinate system	NAD83, UTM Zone 13
Elevation	3335 m (10,942 ft)
Survey Date	8/30/2024
Approximate peat depth	2 – 50 cm
Plant Association	CEGL001802: <i>Carex aquatilis</i> Wet Meadow

Site Description

Site is dominated by *Carex aquatilis* and *Salix planifolia*, with lots of *Menyanthes trifoliata* and *Caltha leptosepala* and *Rhodiola rhodantha*. The wetland is a basin fen with deep water in parts with a very mucky bottom. A small section of floating vegetation is inaccessible because of the deep water, and since this site was accessed on a backpacking trip and the crew only brought one pair of pants and temps are getting down to the 30's at night, the crew decided not to risk still having wet pants by the time night falls. The wetland stops being fen more on the western side of the site.

Access Directions

From The Meadows Trailhead, hike up the South Fork Trail/Doe Creek Trail to where it meets the Oyster Lake Trail and head west for a total of 12.5 km. Then hike offtrail to the north about 10 m to the polygon. This was originally sampled as a part of a part of a backpacking loop, and likely would not be a day trip. Expect lots of elevation gain, some creek crossings, and for portions of the hike where the trail is hard (or impossible) to find. Consult digital and paper maps as a backup. A truck with good clearance and 4wd is necessary to get to the trailhead.

Survey Notes

Appears untouched by humans. No obvious herbivory, some animal trails in the site.



Table 50: Species list for WRNF-3302.A

Scientific name	Cover Class
<i>Carex aquatilis</i>	8:50-<75%
<i>Menyanthes trifoliata</i>	7:25-<50%
<i>Salix planifolia</i>	6:10-<25%
<i>Rhodiola rhodantha</i>	5:5-<10%
<i>Caltha leptosepala</i>	4:2-<5%
<i>Deschampsia cespitosa</i>	4:2-<5%
<i>Calamagrostis canadensis</i>	4:2-<5%
<i>Packera</i>	4:2-<5%
<i>Pedicularis groenlandica</i>	3:1-<2%

Scientific name	Cover Class
<i>Epilobium ciliatum</i>	3:1-<2%
<i>Phleum alpinum</i>	2:<1%
<i>Bistorta vivipara</i>	2:<1%
<i>Muhlenbergia filiformis</i>	2:<1%
<i>Veronica</i>	2:<1%
<i>Carex nova</i>	2:<1%
<i>Juncus longistylis</i>	2:<1%
<i>Arnica mollis</i>	2:<1%

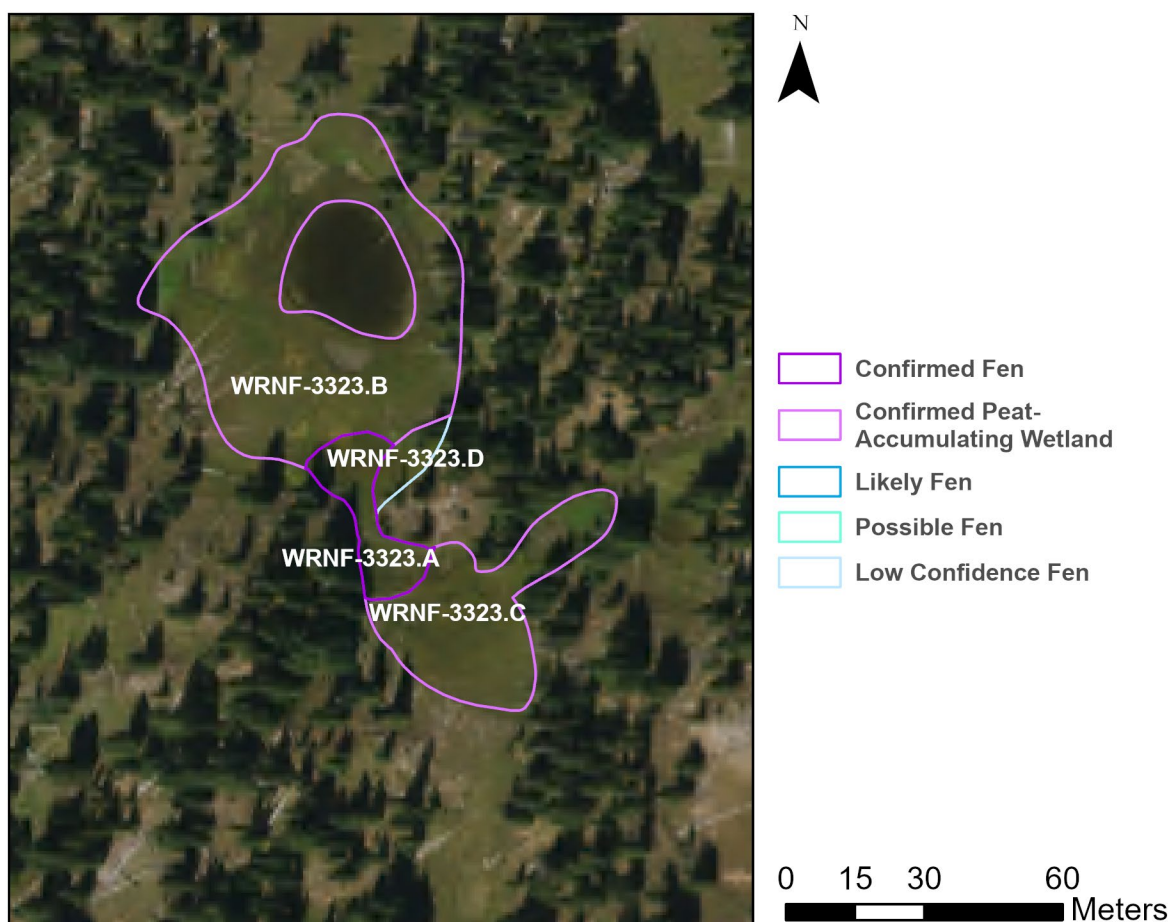


Table 51: Site characteristics of WRNF-3323.A

Latitude	39.91380483
Longitude	-107.343496
Coordinate system	NAD83, UTM Zone 13
Elevation	3327 m (10,915 ft)
Survey Date	8/30/2024
Approximate peat depth	10 – 40 cm
Plant Association	CEGL001822: <i>Carex scopulorum</i> Wet Meadow

Site Description

The site is dominated by *Carex*. The far south portion does not have as much peat. There is an upland inclusion in the center. The northern part of the wetland has some peat accumulation but not 40 cm.

Access Directions

From The Meadows Trailhead at the threshold of the Flat Tops Wilderness Area, hike in ~14.92 km using the South Fork Trail, which connects to the Doe Creek Trail. Cut west where the Doe Creek Trail meets Oyster Lake Trail. This is a backpacking trip, which involves creek/river crossings. In some places in the wilderness, the trails are very hard to find. Bring digital offline maps and physical map as backup. A truck with good clearance and 4wd is necessary to get to the trailhead.

Survey Notes

The site appears untouched.



Table 52: Species list for WRNF-3323.A

Scientific name	Cover Class
<i>Carex scopulorum</i>	6:10-<25%
<i>Caltha leptosepala</i>	5:5-<10%
<i>Carex aquatilis</i>	5:5-<10%
<i>Carex neurophora</i>	5:5-<10%
<i>Senecio triangularis</i>	5:5-<10%
<i>Menyanthes trifoliata</i>	5:5-<10%
<i>Salix planifolia</i>	5:5-<10%
<i>Pedicularis groenlandica</i>	4:2-<5%
<i>Deschampsia cespitosa</i>	4:2-<5%
<i>Calamagrostis canadensis</i>	4:2-<5%
<i>Swertia perennis</i>	3:1-<2%
<i>Phleum alpinum</i>	3:1-<2%
<i>Rhodiola rhodantha</i>	3:1-<2%
<i>Erigeron</i>	3:1-<2%

Scientific name	Cover Class
<i>Luzula parviflora</i>	3:1-<2%
<i>Torreyochloa pallida</i> var. <i>pauciflora</i>	3:1-<2%
<i>Mertensia</i>	3:1-<2%
<i>Rosaceae</i>	3:1-<2%
<i>Carex vesicaria</i>	3:1-<2%
<i>Poaceae</i>	2:<1%
<i>Juncus longistylis</i>	2:<1%
<i>Epilobium ciliatum</i>	2:<1%
<i>Veronica</i>	2:<1%
<i>Veratrum californicum</i>	2:<1%
<i>Rorippa</i>	2:<1%
<i>Alopecurus aequalis</i>	2:<1%

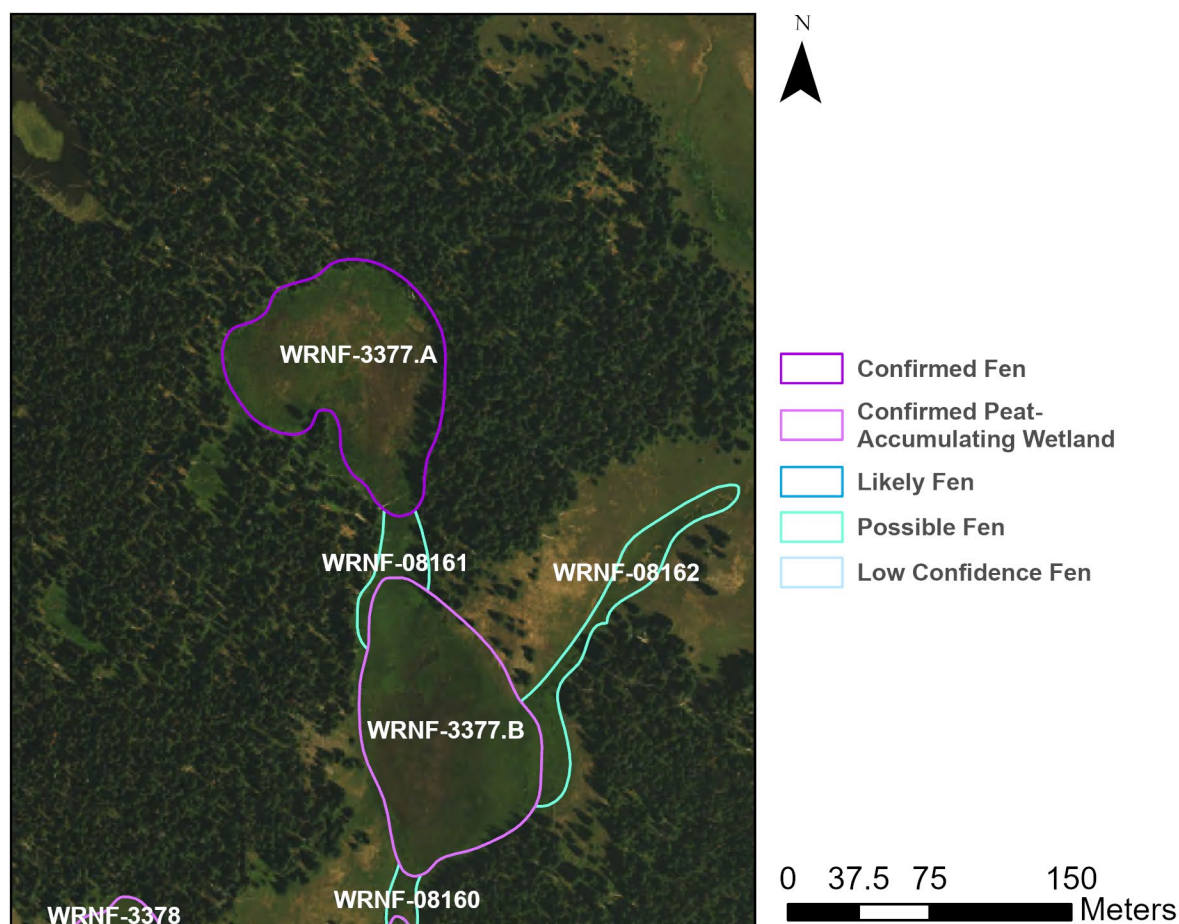


Table 53: Site characteristics of WRNF-3377.A

Latitude	39.88226804
Longitude	-107.3663325
Coordinate system	NAD83, UTM Zone 13
Elevation	3234 m (10,610 ft)
Survey Date	8/31/2024
Approximate peat depth	20 – 50 cm
Plant Association	CEGL001811: <i>Carex limosa</i> Fen

Site Description

The site is dominated by a plethora of sedges, as well as lots of *Salix planifolia*. The north end of the polygon appears to have more peat accumulation than the south end. Not enough standing water to take water chemistry measurements. Fen is slightly sloping to the south.

Access Directions

From The Meadows Trailhead, hike about 2.7 km im on the South Fork Trail. Cross Buck Creek (which was still fairly deep and fast flowing in late August and required taking off shoes and rolling up pants to slowly cross) and head west up the Nichols Creek Trail an additional 3.8 km, go off trail to the west about 375 m to the polygon. This site was originally accessed a different route in a backpacking loop but the previous directions would be simpler for access in a different scenario. Lots of elevation gain is required to access the site, along with multiple creek crossings. Good clearance and 4wd required to navigate forest service roads leading to the trailhead.

Survey Notes

Some bedding and a wallow in the non-fen part of the polygon. Some scat and tracks, but no apparent over-browsing. Appears untouched by humans.



Table 54: Species list for WRNF-3377.A

Scientific name	Cover Class
<i>Carex limosa</i>	6:10-<25%
<i>Carex aquatilis</i>	6:10-<25%
<i>Salix planifolia</i>	6:10-<25%
<i>Carex neurophora</i>	5:5-<10%
<i>Caltha leptosepala</i>	4:2-<5%
<i>Carex utriculata</i>	4:2-<5%
<i>Carex scopulorum</i>	4:2-<5%

Scientific name	Cover Class
<i>Senecio triangularis</i>	4:2-<5%
<i>Rhodiola rhodantha</i>	3:1-<2%
<i>Phleum alpinum</i>	3:1-<2%
<i>Pedicularis groenlandica</i>	3:1-<2%
<i>Ligusticum porteri</i>	3:1-<2%
<i>Swertia perennis</i>	2:<1%

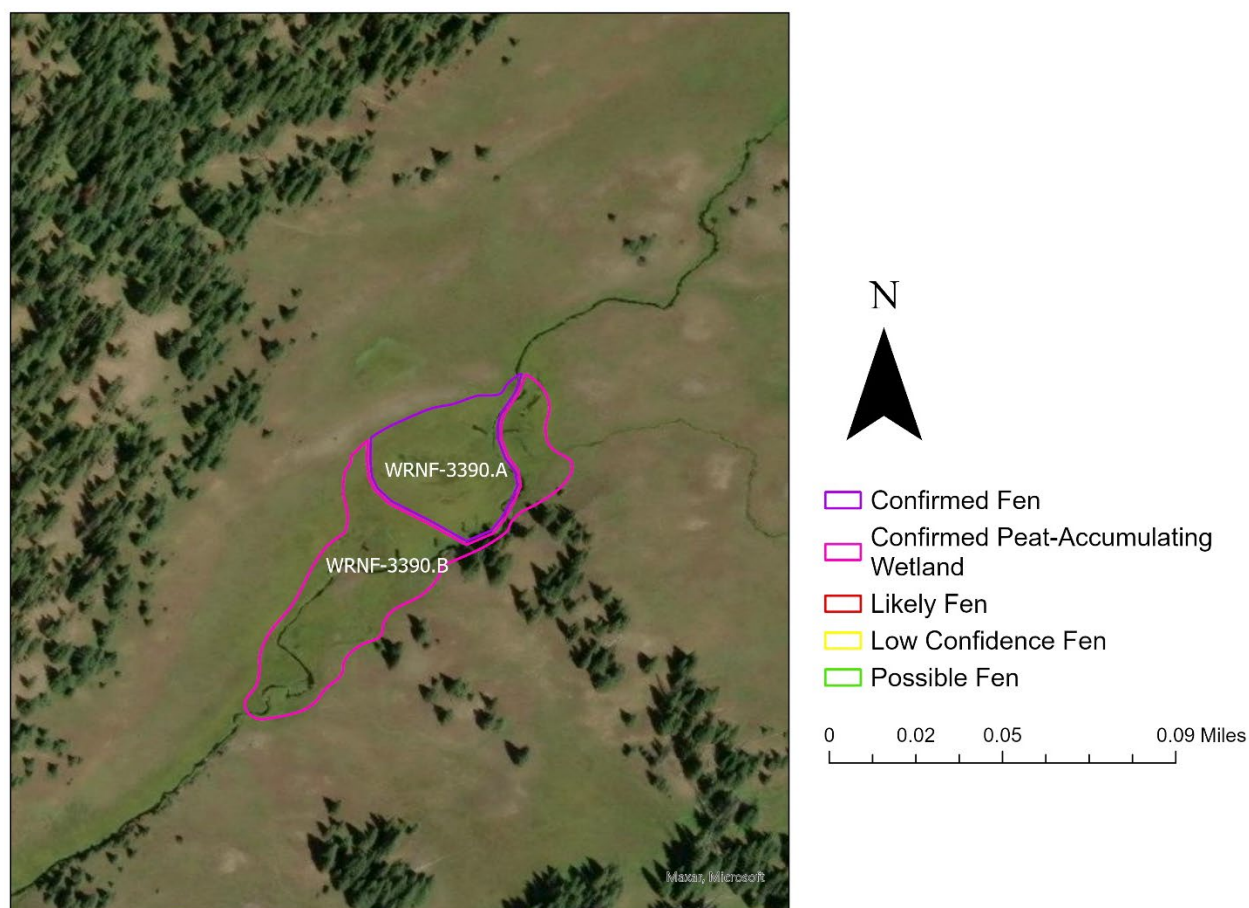


Table 55: Site characteristics of WRNF-3390

Latitude	39.90013529
Longitude	-107.3613041
Coordinate system	NAD83, UTM Zone 13
Elevation	3306 m (10,847 ft)
Survey Date	8/31/2024
Approximate peat depth	15 – 50 cm
Plant Association	CEGL001229: <i>Salix planifolia</i> / <i>Carex scopulorum</i> Shrub Fen

Site Description

The site is dominated by *Salix planifolia*, *Carex scopulorum*, and *Caltha leptosepala*. The wetland is a sloping fen with some channels running through it.

Access Directions

From The Meadows Trailhead, hike up the South Fork Trail about 2.7 km, then head west on the Nichols Creek Trail. There will be a creek crossing at this junction, which was still fairly deep and fast flowing in late August 2024. From this junction, continue up the Nichols Creek Trail an additional 6.23 km (for a total of 8.93 km on trail). From there, hike east off trail about 5 m to the site. This fen was originally sampled as a part of a large backpacking loop, so the route mentioned is not the one the crew took, though it is the most direct way to get to this particular fen. Expect multiple creek crossings, a long hike, and lots of elevation gain. The truck needs to have good clearance, good tires, and 4wd to be able to access the trailhead on the forest service roads.

Survey Notes

Site appears untouched, despite being right next to the trail.



Table 56. Species list for WRNF-3390

Scientific name	Cover Class
<i>Salix planifolia</i>	7:25-<50%
<i>Carex scopulorum</i>	6:10-<25%
<i>Caltha leptosepala</i>	6:10-<25%
<i>Carex utriculata</i>	5:5-<10%
<i>Pedicularis groenlandica</i>	4:2-<5%
<i>Rhodiola rhodantha</i>	4:2-<5%
<i>Carex neurophora</i>	4:2-<5%

Scientific name	Cover Class
<i>Swertia perennis</i>	3:1-<2%
<i>Mimulus</i>	3:1-<2%
<i>Luzula parviflora</i>	2:<1%
<i>Aconitum columbianum</i>	2:<1%

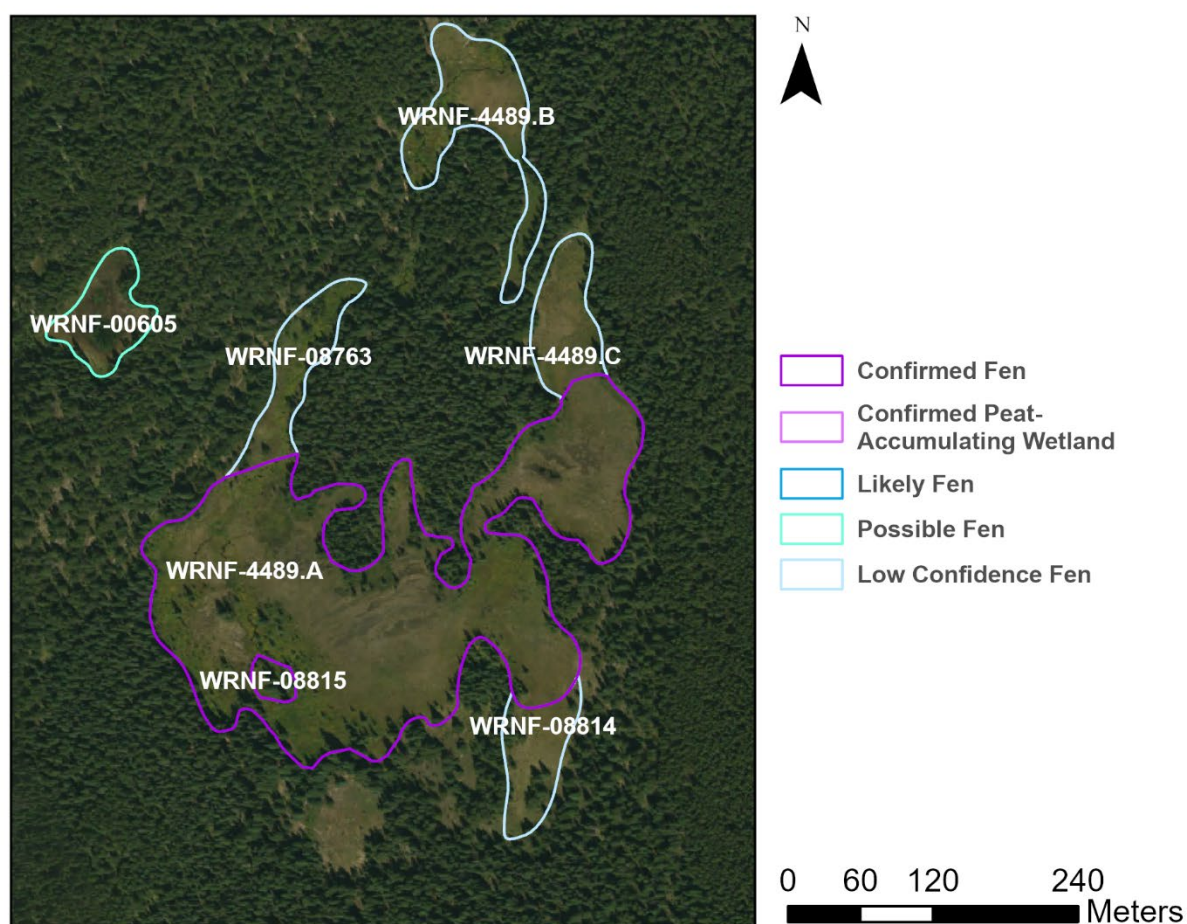


Table 57: Site characteristics of WRNF-4489.A

Latitude	39.27874298
Longitude	-106.6467496
Coordinate system	NAD83, UTM Zone 13
Elevation	3092 m (10,144 ft)
Survey Date	9/13/2024
Approximate peat depth	50 – 100 cm
Plant Association	CEGL001811: <i>Carex limosa</i> Fen

Site Description

Sphagnum moss is present. Significant amounts of *Carex limosa* and *Carex buxbaumii* are present in fen area. The *Sphagnum* moss in the site creates mounds. The whole original polygon is not a fen. The site is a basin fen with upland in the middle of the polygon.

Access Directions

From the Sawyer Lake Trailhead, hike in approximately 3.4 km on trail, then hike into the site about 40 m to the east of the trail. The site has a large upland inclusion in the middle, so navigating the site in a large loop was the best way to cover ground. The southern portion of the site (especially the southeastern portion) is the best fen area in terms of vegetation and peat accumulation.

Survey Notes

Some ungulate use in site at large. Minimal in fen area. Enormous bull moose observed while sampling.



Table 58: Species list for WRNF-4489.A

Scientific name	Cover Class
<i>Carex buxbaumii</i>	6:10-<25%
<i>Carex utriculata</i>	5:5-<10%
<i>Viola</i>	4:2-<5%
<i>Deschampsia cespitosa</i>	4:2-<5%
<i>Betula glandulosa</i>	4:2-<5%
<i>Carex echinata</i> ssp. <i>echinata</i>	3:1-<2%
<i>Abies bifolia</i>	3:1-<2%
<i>Picea engelmannii</i> var. <i>engelmannii</i>	3:1-<2%
<i>Calamagrostis canadensis</i>	3:1-<2%
<i>Carex aquatilis</i>	3:1-<2%

Scientific name	Cover Class
<i>Menyanthes trifoliata</i>	2:<1%
<i>Pedicularis groenlandica</i>	2:<1%
<i>Danthonia intermedia</i>	2:<1%
<i>Juncus</i>	2:<1%
<i>Asteraceae</i>	2:<1%
<i>Veronica</i>	2:<1%
<i>Luzula parviflora</i>	2:<1%
<i>Bistorta bistortoides</i>	2:<1%
<i>Rhodiola rhodantha</i>	2:<1%
<i>Swertia perennis</i>	2:<1%
<i>Eriophorum angustifolium</i>	2:<1%

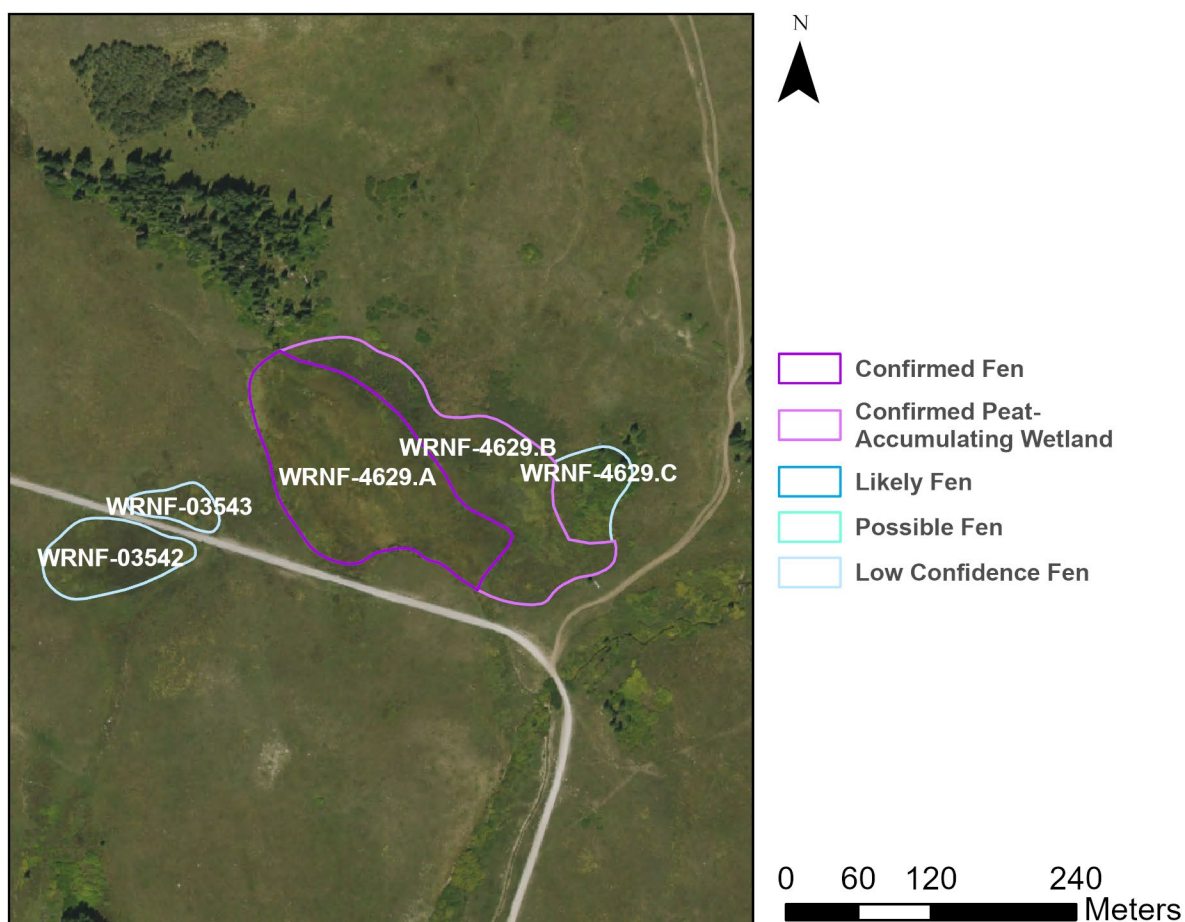


Table 59: Site characteristics of WRNF-4629.A

Latitude	39.68829602
Longitude	-107.2353045
Coordinate system	NAD83, UTM Zone 13
Elevation	3118 m (10,230 ft)
Survey Date	9/1/2024
Approximate peat depth	20 – 45 cm
Plant Association	CEGL001234: <i>Salix wolfii</i> / <i>Carex aquatilis</i> Wet Shrubland

Site Description

Not a particularly diverse fen – the site is largely dominated by *Carex*, with a mix of other forbs as well. Eastern part of polygon is not fen. Deeper peat occurs in the western portion of the polygon.

Access Directions

Park near 39.686722°N 107.233580°W which is where Coffee Pot Rd and Broken Rib Creek meet. From there, hike about 50 m into the polygon

Survey Notes

Clear human disturbance - a field of what appears to be hundreds of sheep is adjacent to polygon, as well as four sheep dogs and a horse.



Table 60: Species list for WRNF-4629.A

Scientific name	Cover Class
<i>Carex aquatilis</i>	6:10-<25%
<i>Salix wolfii</i> var. <i>wolfii</i>	6:10-<25%
<i>Carex utriculata</i>	6:10-<25%
<i>Caltha leptosepala</i>	5:5-<10%
<i>Potentilla fruticosa</i>	4:2-<5%
<i>Mimulus</i>	3:1-<2%
<i>Swertia perennis</i>	3:1-<2%
<i>Gentianopsis detonsa</i> var. <i>elegans</i>	3:1-<2%
<i>Ligusticum porteri</i>	2:<1%
<i>Stellaria</i>	2:<1%

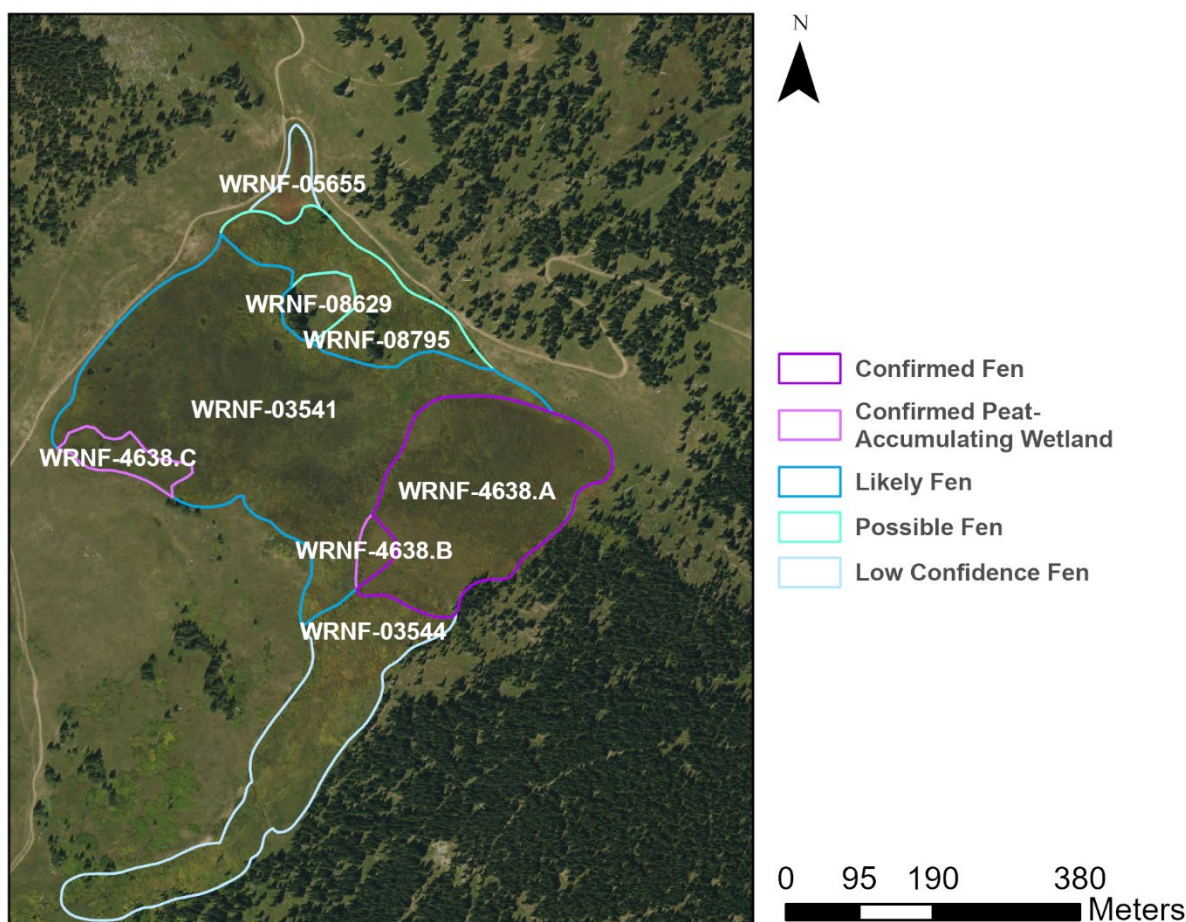


Table 61: Site characteristics of WRNF-4638.A

Latitude	39.69176444
Longitude	-107.2262648
Coordinate system	NAD83, UTM Zone 13
Elevation	3162 m (10,374 ft)
Survey Date	9/1/2024
Approximate peat depth	10 – 45 cm
Plant Association	CEGL001227: <i>Salix planifolia</i> / <i>Carex aquatilis</i> Wet Shrubland

Site Description

The site is overwhelmingly dominated by *Salix planifolia* and *Carex aquatilis*. More *Salix* around the margins and to the south of the polygon. Some patches in the northern end of *Eriophorum*. The wetland is at a slight slope to the south. More peat and fen plants to the north of the site.

Access Directions

Park near 39.686960°N 107.233380°W which is where Coffee Pot Rd and Broken Rib Creek meet. From there, hike about 163 m into the southwestern portion of the site. The northern part of the site is better fen, and it's easier to navigate to the northern side via the adjacent jeep trail, rather than bushwhacking.

Survey Notes

Site adjacent to field of hundreds of sheep and adjacent to dispersed camping and a moderately used jeep trail. Generally, in good condition.



Table 62: Species list for WRNF-4638.A

Scientific name	Cover Class
<i>Salix planifolia</i>	8:50-<75%
<i>Carex aquatilis</i>	8:50-<75%
<i>Calamagrostis canadensis</i>	4:2-<5%
<i>Pedicularis groenlandica</i>	4:2-<5%
<i>Caltha leptosepala</i>	4:2-<5%
<i>Potentilla fruticosa</i>	4:2-<5%
<i>Rhodiola rhodantha</i>	3:1-<2%
<i>Swertia perennis</i>	3:1-<2%
<i>Eriophorum angustifolium</i>	3:1-<2%
<i>Ligusticum porteri</i>	2:<1%
<i>Gentianopsis detonsa</i> var. <i>elegans</i>	2:<1%
<i>Trisetum spicatum</i>	2:<1%

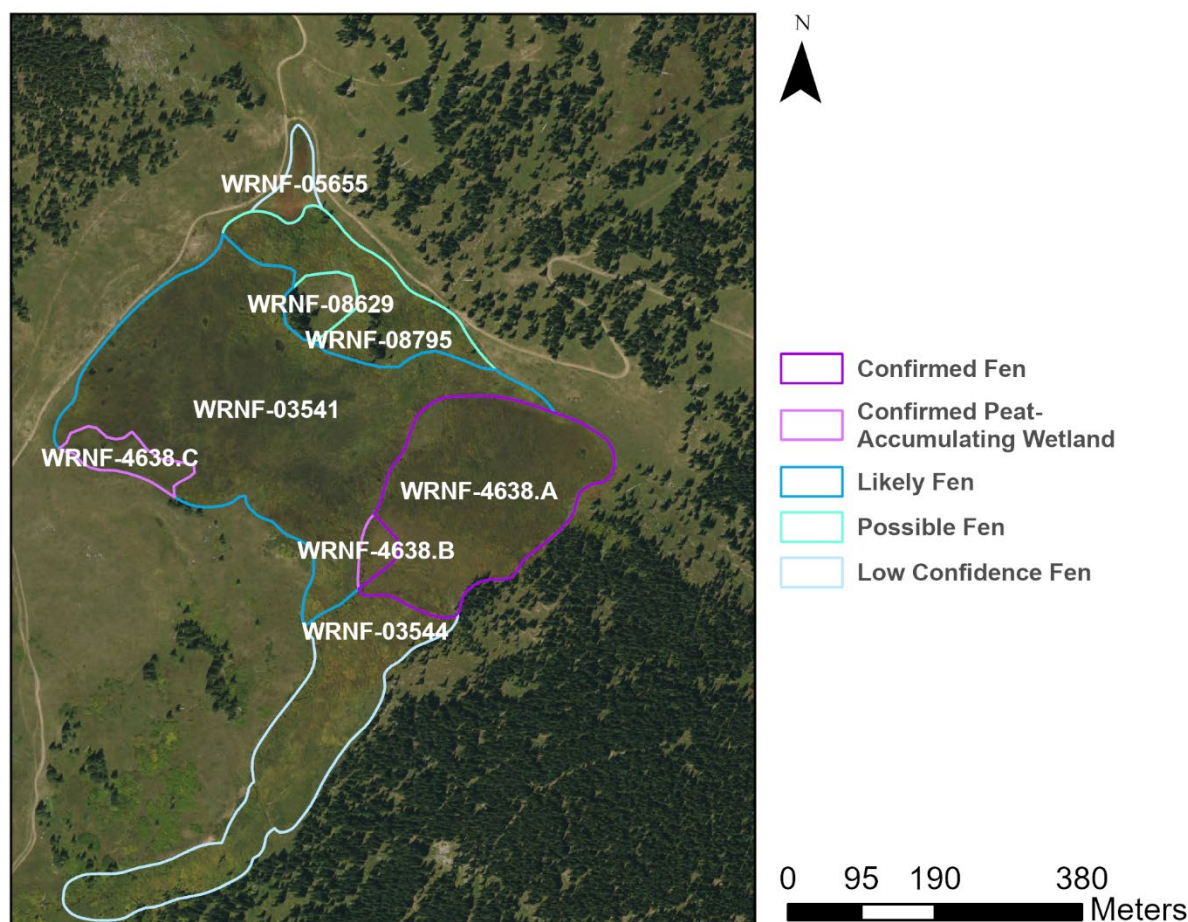


Table 63: Site characteristics of WRNF-4639

Latitude	39.71729225
Longitude	-107.3153328
Coordinate system	NAD83, UTM Zone 13
Elevation	3213 m (10,541 ft)
Survey Date	9/2/2024
Approximate peat depth	15 – 50 cm
Plant Association	CEGL001227: <i>Salix planifolia</i> / <i>Carex aquatilis</i> Wet Shrubland

Site Description

The site has a good variety of plants. It has a lot of gentians, *Pedicularis groenlandica*, *Swertia perennis*, and other forbs mixed in with a variety of sedges and grasses, most notable are *Carex diandra* (which had an EO here before), *Carex limosa*, *Carex gynocrates*, and *Eriophorum gracile*. Willows consist of *Salix planifolia* and *Salix wolfii*, and possibly a hybrid of the two. The wetland has a gentle slope towards Grizzly Creek.

Access Directions

From Coffee Pot Rd, drive west on White Owl Rd approximately 5.91 km, ideally in a vehicle with good clearance and 4wd. From there, hike about 15 m into the polygon / fen area near Grizzly Creek. The road is good for the most part. Lots of bushwhacking through dense *Salix* in the site. Also, at this time in the year, hundreds of gunshots were heard, so come in blaze orange and be aware.

Survey Notes

Site appears untouched by humans, despite being adjacent to a road that appears to be used fairly often, at least during hunting season.



Table 64: Species list for WRNF-4639

Scientific name	Cover Class
<i>Carex vesicaria</i>	7:25-<50%
<i>Salix planifolia</i>	6:10-<25%
<i>Salix wolfii</i> var. <i>wolfii</i>	6:10-<25%
<i>Carex aquatilis</i>	6:10-<25%
<i>Caltha leptosepala</i>	5:5-<10%
<i>Eriophorum gracile</i>	5:5-<10%
<i>Carex limosa</i>	4:2-<5%
<i>Swertia perennis</i>	4:2-<5%
<i>Deschampsia cespitosa</i>	4:2-<5%
<i>Equisetum laevigatum</i>	4:2-<5%
<i>Carex diandra</i>	3:1-<2%

Scientific name	Cover Class
<i>Rhodiola rhodantha</i>	3:1-<2%
<i>Gentianopsis detonsa</i> var. <i>elegans</i>	3:1-<2%
<i>Pedicularis groenlandica</i>	3:1-<2%
<i>Rosaceae</i>	3:1-<2%
<i>Juncus ensifolius</i>	3:1-<2%
<i>Thalictrum</i>	3:1-<2%
<i>Juncus triglumis</i>	3:1-<2%
<i>Senecio triangularis</i>	3:1-<2%
<i>Carex utriculata</i>	3:1-<2%
<i>Agrostis gigantea</i>	3:1-<2%

Scientific name	Cover Class
<i>Ligusticum porteri</i>	3:1-<2%
<i>Phleum alpinum</i>	2:<1%
<i>Geum macrophyllum</i> var. <i>perincisum</i>	2:<1%
<i>Antennaria corymbosa</i>	2:<1%

Scientific name	Cover Class
<i>Bistorta vivipara</i>	2:<1%
<i>Carex gynocrates</i>	2:<1%
<i>Platanthera</i>	2:<1%



Carex diandra



Carex limosa



Eriophorum gracile

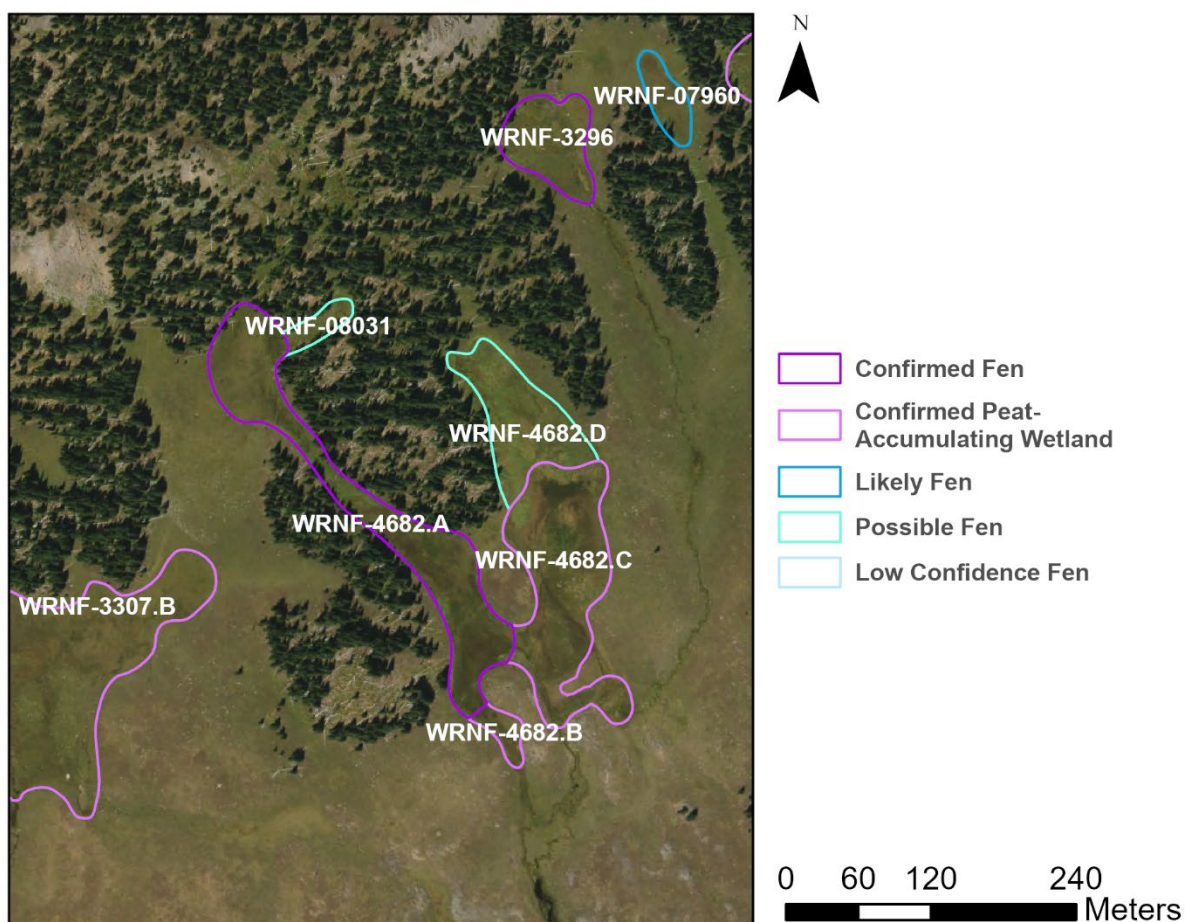


Table 65: Site characteristics of WRNF-4682.A

Latitude	39.92784594
Longitude	-107.2852797
Coordinate system	NAD83, UTM Zone 13
Elevation	3353 m (11,001 ft)
Survey Date	8/29/2024
Approximate peat depth	5 – 50 cm
Plant Association	CEGL001811CEGL001803: <i>Carex aquatilis</i> - <i>Carex utriculata</i> Wet Meadow

Site Description

Sedge dominated with a diverse mix of other species. The site is generally flat and not sloping in any direction.

Access Directions

From the Meadows Trailhead hike about 9 km up the South Fork Trail and the Doe Creek Trail. Then cut east about 1.6 km to the polygon. This is a backpacking site, the trail is sometimes hard to find. Truck needs good clearance, good tires, and 4wd to navigate forest roads to get to the trailhead. Expect creek crossings and lots of elevation gain.

Survey Notes

Site has some ungulate tracks and scat but no obvious signs of herbivory.



Table 66: Species list for WRNF-4682.A

Scientific name	Cover Class
<i>Carex aquatilis</i>	7:25-<50%
<i>Carex utriculata</i>	7:25-<50%
<i>Deschampsia cespitosa</i>	5:5-<10%
<i>Eleocharis pauciflora</i>	5:5-<10%
<i>Calamagrostis canadensis</i>	5:5-<10%
<i>Pedicularis groenlandica</i>	4:2-<5%
<i>Phleum alpinum</i>	4:2-<5%
<i>Carex canescens</i> ssp. <i>canescens</i>	4:2-<5%
<i>Caltha leptosepala</i>	4:2-<5%
<i>Carex</i>	4:2-<5%
<i>Veronica</i>	3:1-<2%

Scientific name	Cover Class
<i>Rhodiola rhodantha</i>	3:1-<2%
<i>Trisetum spicatum</i>	3:1-<2%
<i>Epilobium ciliatum</i>	3:1-<2%
<i>Carex microptera</i>	3:1-<2%
<i>Salix planifolia</i>	3:1-<2%
<i>Sibbaldia procumbens</i>	3:1-<2%
<i>Mimulus</i>	3:1-<2%
<i>Viola</i>	3:1-<2%
<i>Ranunculus</i>	3:1-<2%
<i>Symphyotrichum lanceolatum</i> ssp. <i>hesperium</i>	3:1-<2%
<i>Achillea millefolium</i>	3:1-<2%

Scientific name	Cover Class
<i>Veratrum californicum</i>	3:1-<2%
<i>Carex scopulorum</i>	3:1-<2%
<i>Senecio triangularis</i>	3:1-<2%
<i>Juncus longistylis</i>	2:<1%
<i>Antennaria corymbosa</i>	2:<1%
<i>Swertia perennis</i>	2:<1%
<i>Bistorta bistortoides</i>	2:<1%
<i>Bistorta vivipara</i>	2:<1%
<i>Arnica mollis</i>	2:<1%
<i>Gentiana prostrata</i>	2:<1%



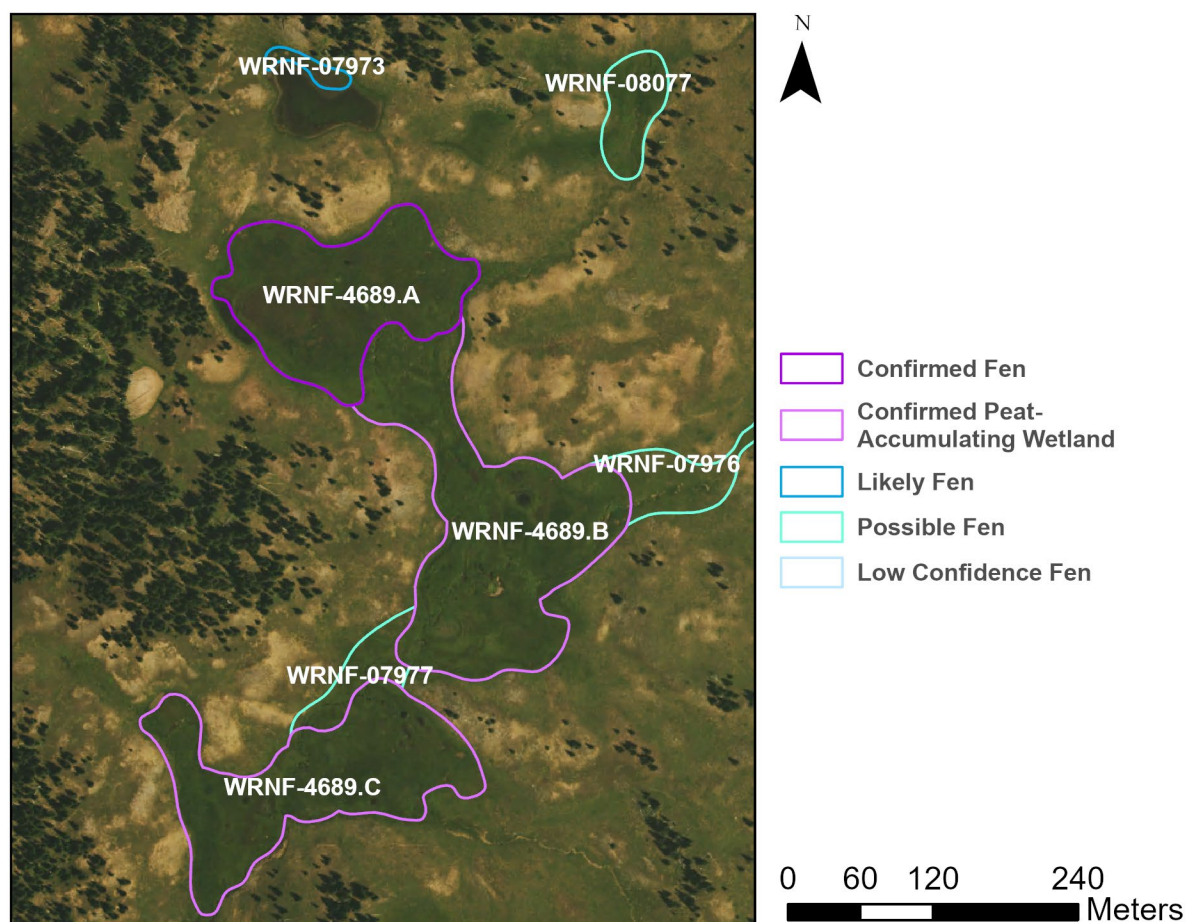


Table 67: Site characteristics of WRNF-4689.A

Latitude	39.90833893
Longitude	-107.356584
Coordinate system	NAD83, UTM Zone 13
Elevation	3346 m (10,978 ft)
Survey Date	8/31/2024
Approximate peat depth	2 – 50 cm
Plant Association	CEGL001229: <i>Salix planifolia</i> / <i>Carex scopulorum</i> Shrub Fen

Site Description

The wetland is largely dominated by a variety of sedges. Some areas with higher *Salix* cover. The site is expansive. Some areas are more peat accumulating than others. Some spots flat, others have a gentle slope.

Access Directions

From the Meadows Trailhead, hike along the South Fork Trail for about 2.9 km, then cut west to the Nichols Creek Trail, which will require a crossing a fairly deep and fast flowing creek. From there,

continue up another 6.73 km (for a total of 9.63 km) to the site, which is directly next to the trail. This is not how the site was originally accessed, as it was a part of a backpacking loop, but this is the more direct route to the site on its own. Expect a lot of elevation gain with some areas where the trail fades and a couple creek crossings. The truck needs 4wd and good tires and good clearance to navigate forest roads to the trailhead.

Survey Notes

Hunter activity in the area (skull present with antlers sawed off), and some ungulate tracks and scat in site, but the site overall is in great condition.



Table 68: Species list for WRNF-4689.A

Scientific name	Cover Class
<i>Salix planifolia</i>	6:10-<25%
<i>Carex scopulorum</i>	6:10-<25%
<i>Deschampsia cespitosa</i>	5:5-<10%
<i>Carex neurophora</i>	5:5-<10%
<i>Caltha leptosepala</i>	5:5-<10%
<i>Carex utriculata</i>	5:5-<10%
<i>Pedicularis groenlandica</i>	3:1-<2%
<i>Rhodiola rhodantha</i>	3:1-<2%
<i>Erigeron</i>	3:1-<2%
<i>Swertia perennis</i>	3:1-<2%
<i>Mimulus</i>	3:1-<2%
<i>Phleum alpinum</i>	3:1-<2%

Scientific name	Cover Class
<i>Carex microptera</i>	3:1-<2%
<i>Senecio triangularis</i>	3:1-<2%
<i>Achillea millefolium</i>	3:1-<2%
<i>Rosaceae</i>	3:1-<2%
<i>Epilobium ciliatum</i>	2:<1%
<i>Veronica</i>	2:<1%
<i>Juncus longistylis</i>	2:<1%
<i>Geum macrophyllum</i> var. <i>perincisum</i>	2:<1%
<i>Arnica mollis</i>	2:<1%

WRNF- 4698.A & B

South Fork Trail

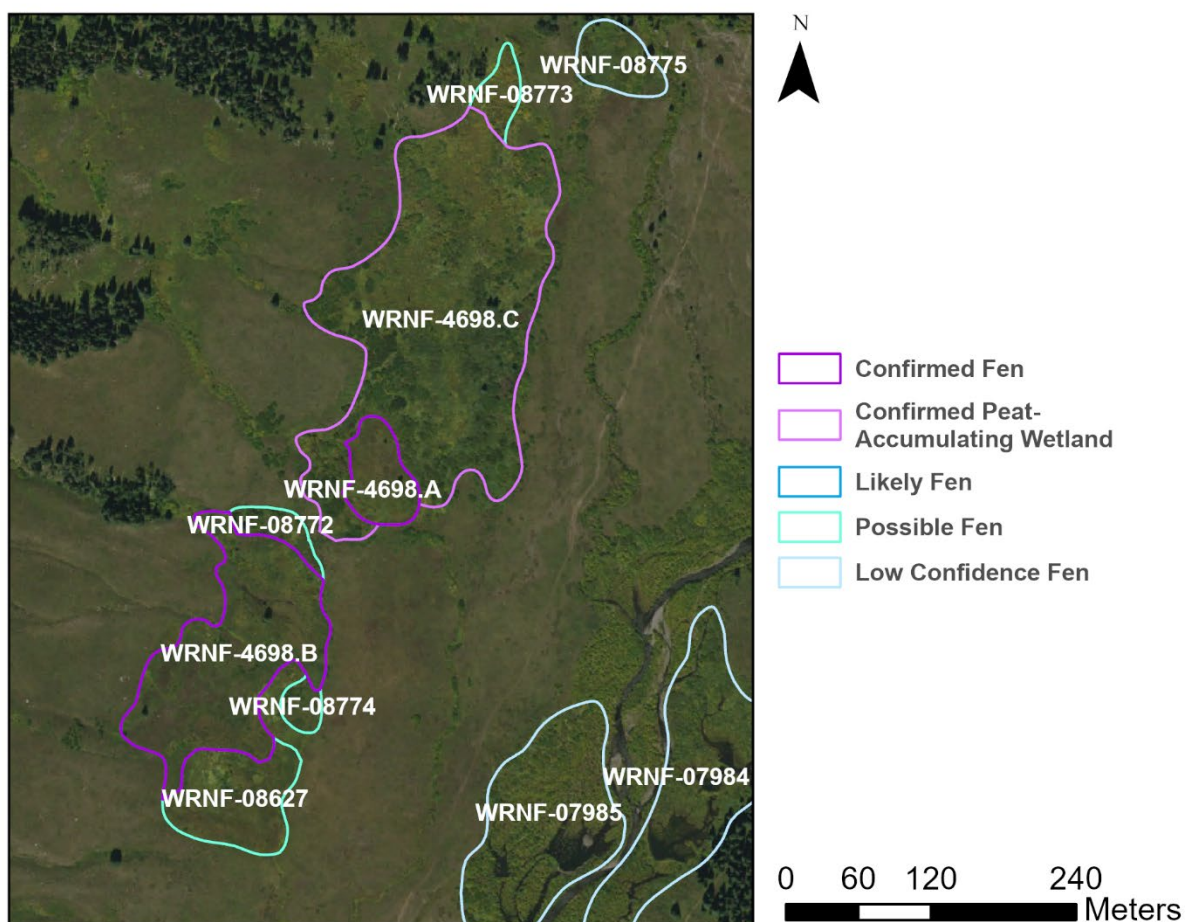


Table 69: Site characteristics of WRNF-4698.A & B

Latitude	39.87890675
Longitude	-107.3256256
Coordinate system	NAD83, UTM Zone 13
Elevation	2813 m (9,229 ft)
Survey Date	8/28/2024
Approximate peat depth	25 – 50 cm
Plant Association	CEGL001234: <i>Salix wolfii</i> / <i>Carex aquatilis</i> Wet Shrubland

Site Description

The vegetation is dominated by sedges and *Salix*, mainly *Carex aquatilis* and *Carex utriculata*, and *Salix wolfii*. Lots of moss, but no *Sphagnum*. Some parts of the polygon are fen, others are not, according to the vegetation and the soils. The site has water channels which flow through it. Some areas are much more *Salix*-dominated than others. Though some areas are not fen, most is at least peat accumulating.

Access Directions

From the Meadows Trailhead at Fawn Creek, hike in ~3.32 km on the South Fork Trail, then hike west into the site ~195 m. The truck will need good clearance and 4wd to get to the trailhead.

Survey Notes

The site appears pristine. Adjacent to a backcountry trail which appears to be occasionally used by hikers and horseback riders, but there is no obvious human disturbance in the site. Some ungulate beds and trails, but no apparent overgrazing.



Table 70: Species list for WRNF-4698.A & B

Scientific name	Cover Class
<i>Salix wolfii</i> var. <i>wolfii</i>	7:25-<50%
<i>Carex aquatilis</i>	6:10-<25%
<i>Angelica</i>	6:10-<25%
<i>Potentilla fruticosa</i>	5:5-<10%
<i>Carex utriculata</i>	5:5-<10%
<i>Salix lasiandra</i> var. <i>caudata</i>	5:5-<10%
<i>Pedicularis groenlandica</i>	4:2-<5%
<i>Swertia perennis</i>	4:2-<5%
<i>Fragaria vesca</i>	4:2-<5%
<i>Ligusticum porteri</i>	4:2-<5%
<i>Bromus ciliatus</i>	4:2-<5%
<i>Elymus trachycaulus</i>	4:2-<5%

Scientific name	Cover Class
<i>Achillea millefolium</i>	4:2-<5%
<i>Epilobium ciliatum</i>	4:2-<5%
<i>Salix planifolia</i>	4:2-<5%
<i>Taraxacum officinale</i>	3:1-<2%
<i>Platanthera</i>	3:1-<2%
<i>Asteraceae</i>	3:1-<2%
<i>Geum aleppicum</i>	3:1-<2%
<i>Aconitum columbianum</i>	3:1-<2%
<i>Symphyotrichum lanceolatum</i> ssp. <i>hesperium</i>	3:1-<2%
<i>Carex praegracilis</i>	3:1-<2%
<i>Calamagrostis canadensis</i>	3:1-<2%

Scientific name	Cover Class
<i>Heracleum maximum</i>	3:1-<2%
<i>Urtica dioica</i>	3:1-<2%
<i>Caltha leptosepala</i>	3:1-<2%
<i>Juncus arcticus</i>	3:1-<2%
<i>Antennaria pulcherrima</i>	3:1-<2%
<i>Bistorta vivipara</i>	2:<1%
<i>Poaceae</i>	2:<1%
<i>Juncus ensifolius</i>	2:<1%



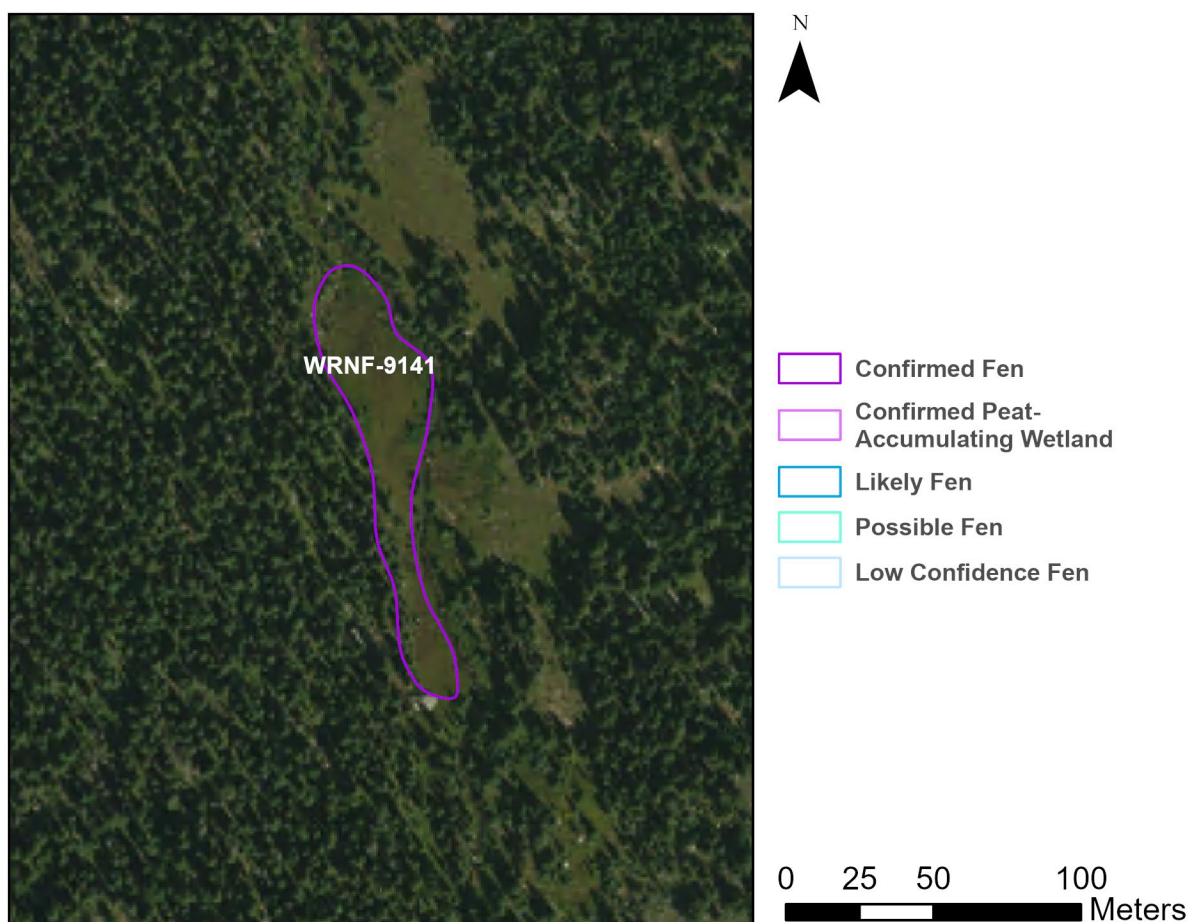


Table 71: Site characteristics of WRNF-9141

Latitude	39.23973098
Longitude	-106.6232593
Coordinate system	NAD83, UTM Zone 13
Elevation	3244 m (10,643 ft)
Survey Date	9/14/2024
Approximate peat depth	50 cm
Plant Association	CEGL001822: <i>Carex scopulorum</i> Wet Meadow

Site Description

Fen directly adjacent to the trail. *Sphagnum* present. Site at the following coordinates: 39.24606, -106.62602, was not originally mapped as a polygon. The wetland is adjacent to Chapman Creek. Lots of fen plants with peat accumulation.

Access Directions

Hike in about 2.4 km down the Chapman Gulch Trail. The site is directly east of the trail.

Survey Notes

The wetland is directly adjacent to Chapman Gulch Trail but appears untouched by humans. No obvious signs of herbivory.



Table 72: Species list for WRNF-9141

Scientific name	Cover Class
<i>Carex scopulorum</i>	6:10-<25%
<i>Caltha leptosepala</i>	5:5-<10%
<i>Carex gynocrates</i>	4:2-<5%
<i>Carex illota</i>	4:2-<5%
<i>Calamagrostis canadensis</i>	4:2-<5%
<i>Deschampsia cespitosa</i>	4:2-<5%
<i>Picea engelmannii</i> var. <i>engelmannii</i>	3:1-<2%
<i>Swertia perennis</i>	3:1-<2%
<i>Salix planifolia</i>	3:1-<2%
<i>Carex aurea</i>	2:<1%
<i>Arnica mollis</i>	2:<1%
<i>Bistorta vivipara</i>	2:<1%
<i>Rhodiola rhodantha</i>	2:<1%
<i>Ligusticum porteri</i>	2:<1%
<i>Danthonia intermedia</i>	2:<1%
<i>Poaceae</i>	2:<1%
<i>Anemone</i>	2:<1%